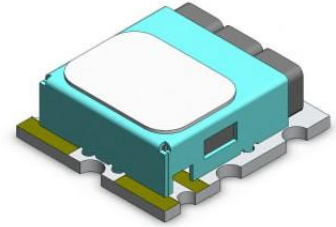


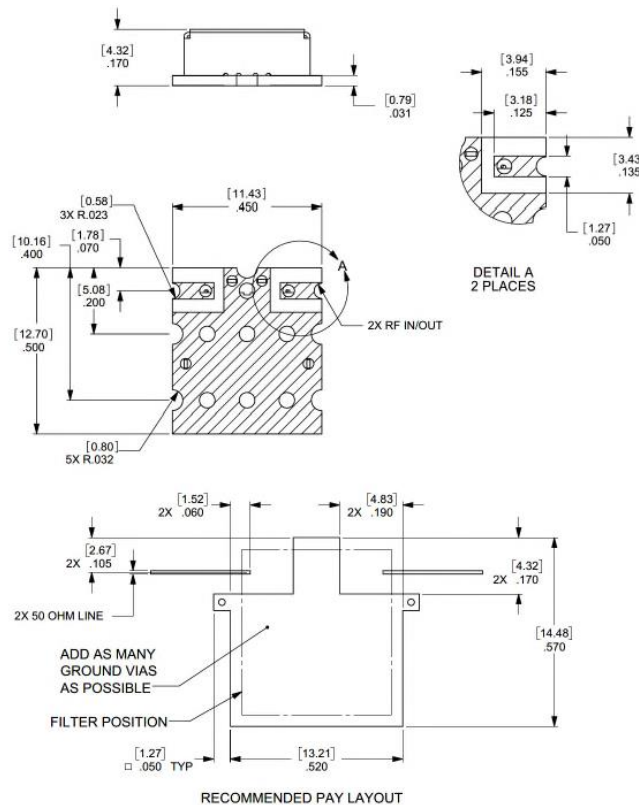
## Ceramic Bandpass Filter

### Features/Benefits

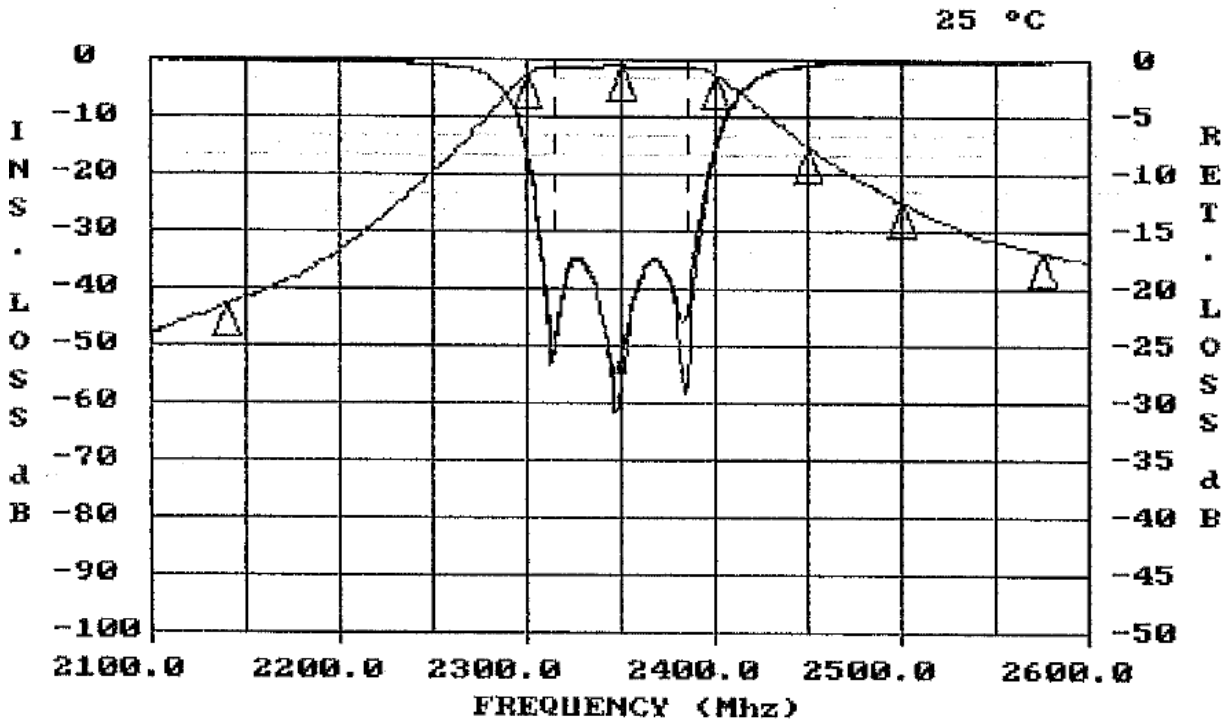
- Surface Mount
- Low Profile



Parameter	Specification
Center Frequency (Fo)	2350 MHz
Passband	-1.75 dBc max from 2300 MHz to 2400 MHz
Return Loss	-15 dB min from 2315 MHz to 2385 MHz
Insertion Loss	-2.0 dBa max @ 2350 MHz
Rejection	-30 dBc min @ 2140 MHz -10 dBc min @ 2450 MHz -18 dBc min @ 2500 MHz -24 dBc min @ 2574.6 MHz
Temperature, Operating	-20°C to +80°C
Temperature, Storage	-55°C to +125°C
Temperature, Soldering	+215°C MAX (use convective reflow)
Mechanical Dimensions	0.450 x 0.500 x 0.170 inches [11.43 x 12.70 x 4.32 mm] (L X W X H)



This document contains proprietary information and is to be used only for the purposes for which it has been supplied and is not to be duplicated or disclosed in whole or in part without written permission from a duly authorized representative of Knowles.



FREQUENCY (MHZ)	VALUE	SPEC	COMMENTS
2350	-1.02 dbA	-2 dbA MAX	
2140	-41.9 dbC	-30 dbC MIN	
2450	-14.2 dbC	-10 dbC MIN	
2500	-24.0 dbC	-18 dbC MIN	
2574.6	-32.6 dbC	-24 dbC MIN	
2300 - 2400	-1.60 dbC	-1.75dbC MAX	

FREQUENCY (MHZ)	VALUE	SPEC	COMMENTS
2315 - 2385	-17.4	-15 db MIN	(S11) - VSWR
2315 - 2385	-17.2	-15 db MIN	(S22) - VSWR

This document contains proprietary information and is to be used only for the purposes for which it has been supplied and is not to be duplicated or disclosed in whole or in part without written permission from a duly authorized representative of Knowles.

Phone: 1-315-655-8710 • Email: KPD-NA-sales@knowles.com • www.knowlesc capacitors.com

Product and product information are subject to change without notice.