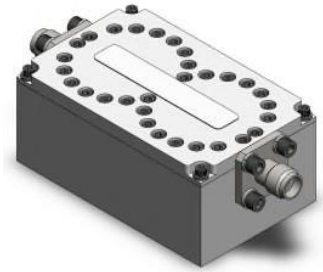


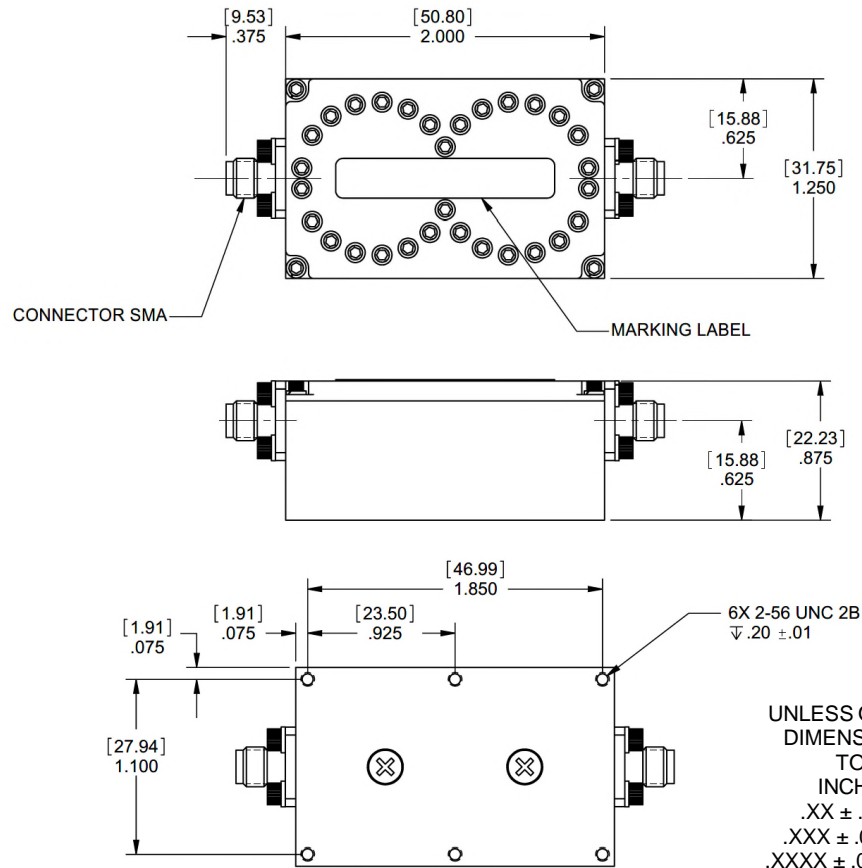
Waveguide Bandpass Filter

Features/Benefits

- Waveguide Filter
- SMA-Female Connectors
- Made in U.S.A.



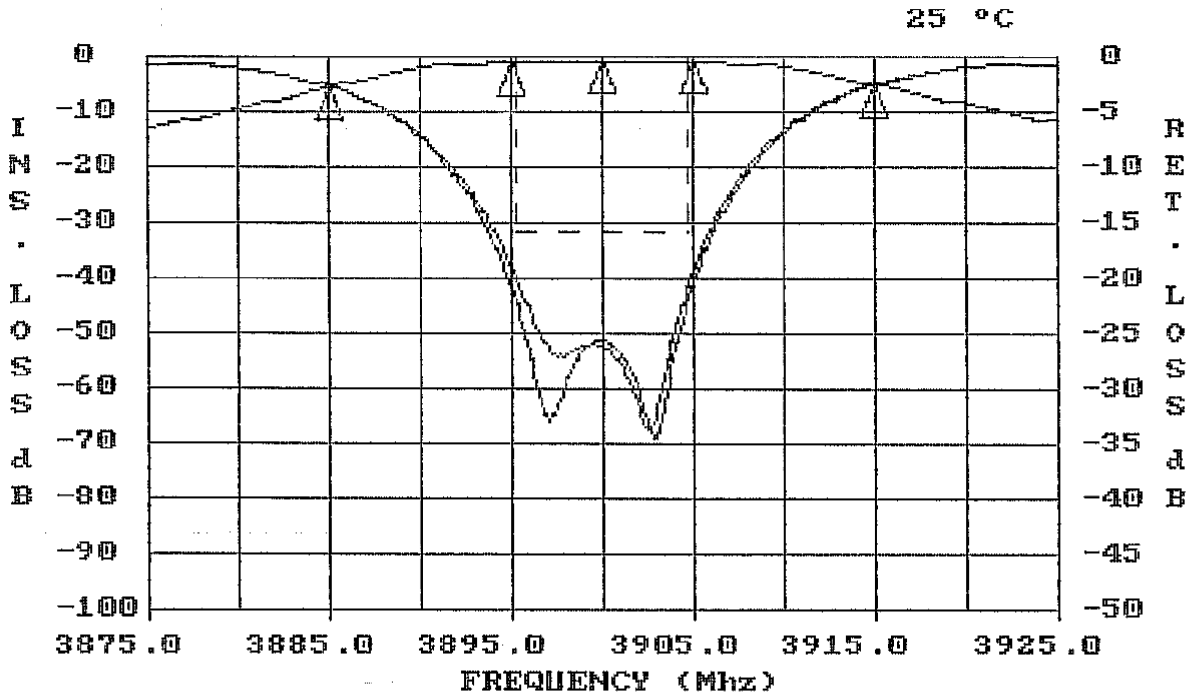
Parameter	Specification
Center Frequency (Fo)	3900 MHz
Passband	-0.5 dBc max from 3895 MHz to 3905 MHz
Return Loss	-16 dB min from 3895.2 MHz to 3904.75 MHz
Insertion Loss	-2.8 dBa max @ 3900 MHz
Rejection	-3 dBc min @ 3890 MHz -3 dBc min @ 3910 MHz
Temperature, Operating	+20°C to +30°C
Temperature, Storage	-55°C to +125°C
Mechanical Dimensions	2.000 x 1.250 x 0.875 inches [50.80 x 31.75 x 22.23 mm] (L X W X H)



This document contains proprietary information and is to be used only for the purposes for which it has been supplied and is not to be duplicated or disclosed in whole or in part without written permission from a duly authorized representative of Knowles.

Phone: 1-315-655-8710 • Email: KPD-NA-sales@knowles.com • www.knowlesc capacitors.com

Product and product information are subject to change without notice.



FREQUENCY (MHZ)	VALUE	SPEC	COMMENTS
3900	-4.796 dbA	-2.8 dbA MAX	
3885	-4.83 dbC	-3 dbC MIN	
3915	-4.26 dbC	-3 dbC MIN	
3895 - 3905	-1.118 dbC	-1.5 dbC MAX	

FREQUENCY (MHZ)	VALUE	SPEC	COMMENTS
3895.2- 3904.75	-21.4	-16 db MIN	(S11) - VSWR
3895.2- 3904.75	-20.1	-16 db MIN	(S22) - VSWR

This document contains proprietary information and is to be used only for the purposes for which it has been supplied and is not to be duplicated or disclosed in whole or in part without written permission from a duly authorized representative of Knowles.

Phone: 1-315-655-8710 • Email: KPD-NA-sales@knowles.com • www.knowlescapacitors.com

Product and product information are subject to change without notice.