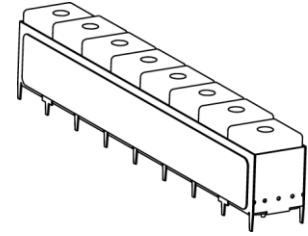


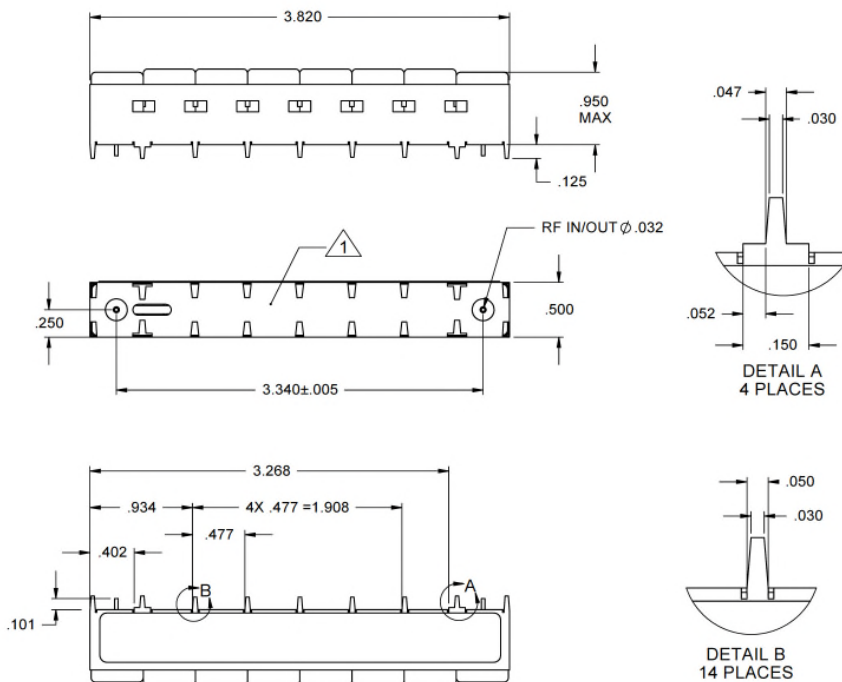
914.5 MHz Elliptic Ceramic Bandpass Filter

Features/Benefits

- Elliptic Ceramic Bandpass Filter
- Low Cost
- RoHS-compliant
- Made in U.S.A.



Parameter	Specification
Center Frequency (Fo)	914.5 MHz
3.0 dBc Passband (PB)	903 to 926.5 MHz, min
Insertion Loss	-5.0 dBa max across PB
VSWR	1.6:1 across PB (-12.74 dB)
Rejection	-28 dBc min @ 894 MHz -25 dBc min @ 929 MHz -30 dBc min @ 930 MHz -28 dBc min across 931 MHz to 2000 MHz
Temperature, Operating	-40°C to +85°C
Temperature, Storage	-55°C to +125°C
Temperature, Soldering	Wave solder only
Mechanical Dimensions	3.820 x 0.500 x 0.950 MAX inches



NOTES:

△ UNDIMENSIONED FEATURES ARE SUBJECT TO VARIATION.

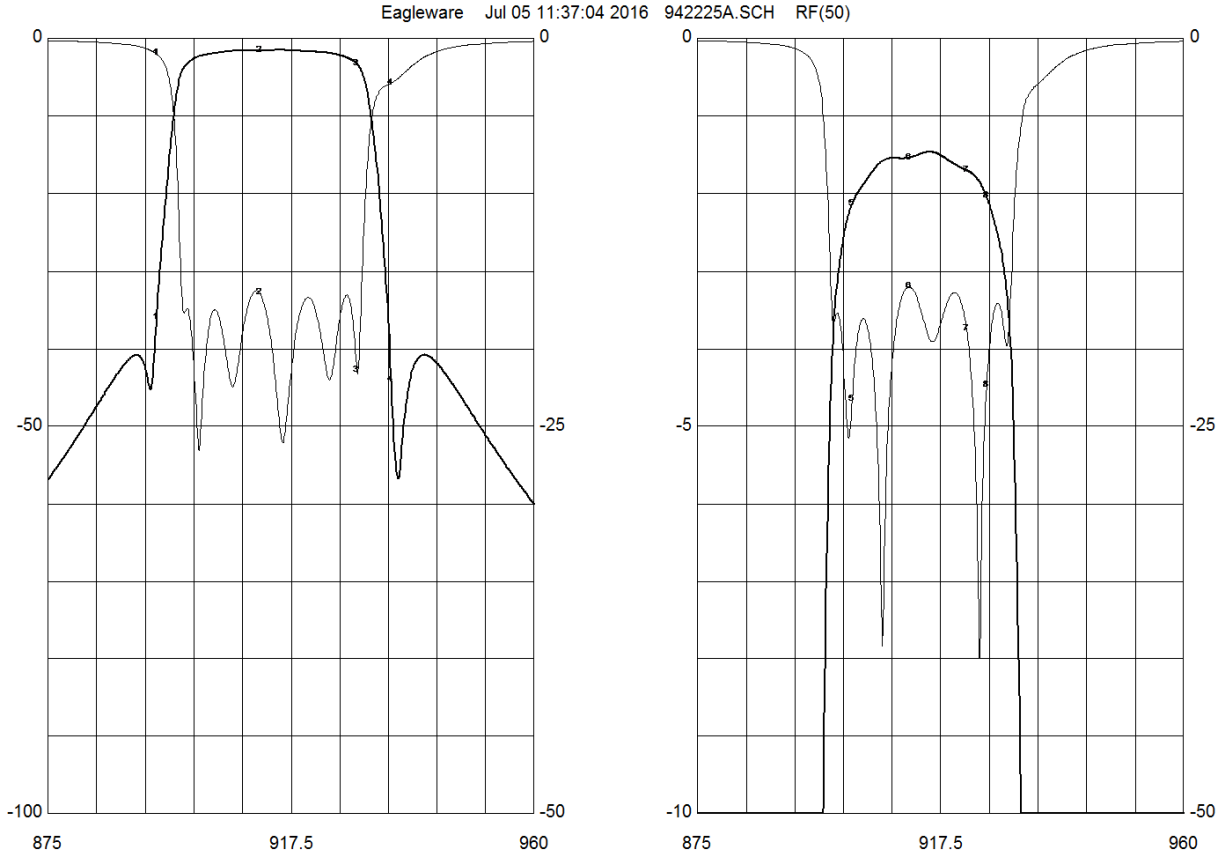
UNLESS OTHERWISE SPECIFIED
DIMENSIONS ARE IN INCHES.
TOLERANCES ARE:

INCHES	MILLIMETERS
.XX ± .02	[X.X] ±.5
.XXX ± .020	[X.XX] ±.51
.XXXX ± .0020	[X.XXX] ±.051

This document contains proprietary information and is to be used only for the purposes for which it has been supplied and is not to be duplicated or disclosed in whole or in part without written permission from a duly authorized representative of Knowles.

Phone: 1-315-655-8710 • Email: KPD-NA-sales@knowles.com • www.knowlescapacitors.com

Product and product information are subject to change without notice.



DB[S21]		DB[S11]		DB[S21]		DB[S22]	
894	912	929	935	902	912	922	925.5
-36.0109	-1.53644	-3.23077	-44.0031	-2.13502	-1.53644	-1.69965	-2.03727
-0.982643	-16.3778	-21.4093	-2.853	-23.2524	-15.9675	-18.7251	-22.3651

This document contains proprietary information and is to be used only for the purposes for which it has been supplied and is not to be duplicated or disclosed in whole or in part without written permission from a duly authorized representative of Knowles.

Phone: 1-315-655-8710 • Email: KPD-NA-sales@knowles.com • www.knowlescapacitors.com

Product and product information are subject to change without notice.