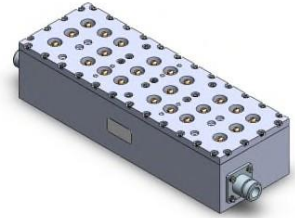


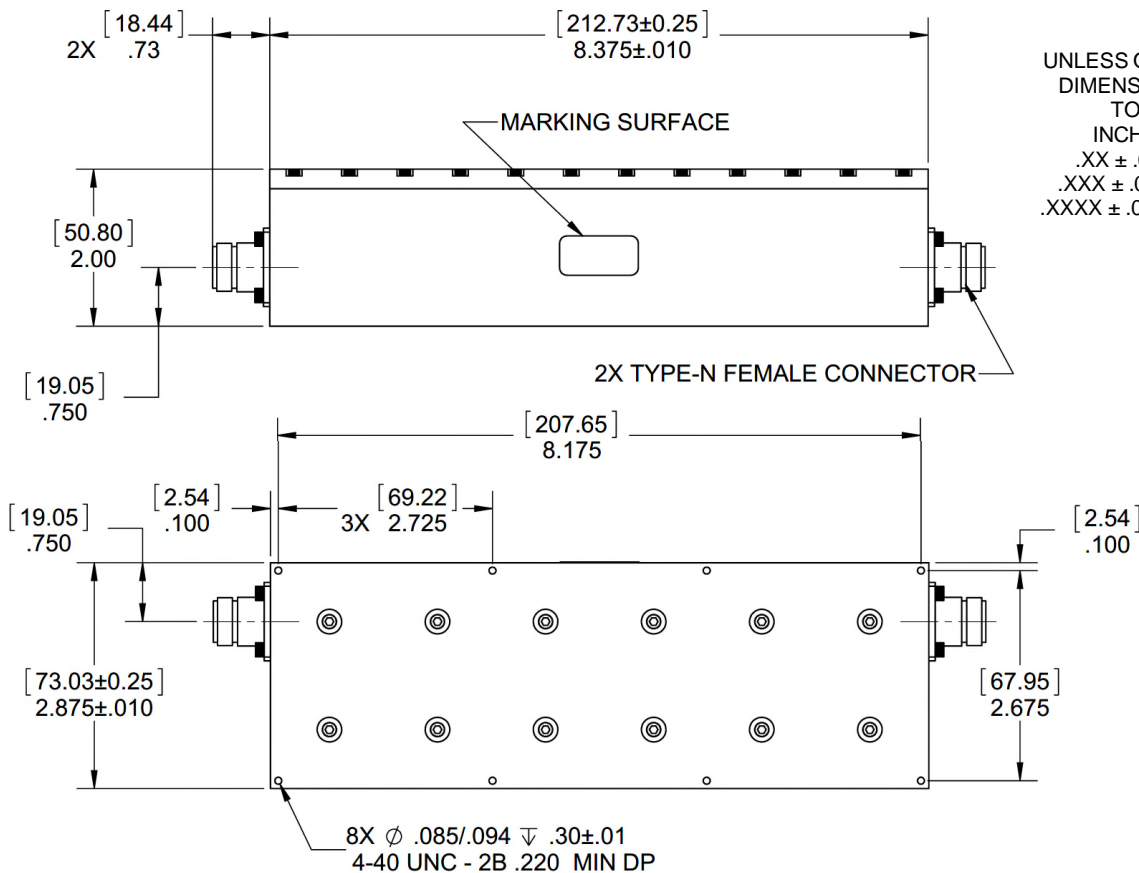
## Cavity Bandpass Filter



### Features/Benefits

- Type N-F Connectors
- Made in U.S.A.

Parameter	Specification
Center Frequency (Fo)	2250 MHz
Passband	-0.75 dBc max from 2200 MHz to 2300 MHz
Return Loss	-15 dB min from 2200 MHz to 2300 MHz
Insertion Loss	-1.5 dBa max from 2200 MHz to 2300 MHz
Rejection	-80 dBc min from 50 MHz to 2170 MHz -80 dBc min from 2330 MHz to 3600 MHz
Temperature, Operating	-20°C to +50°C
Temperature, Storage	-55°C to +125°C
Mechanical Dimensions	8.375 x 2.00 x 2.875 inches [212.73 x 50.8 x 73.03 mm] (L X W X H)



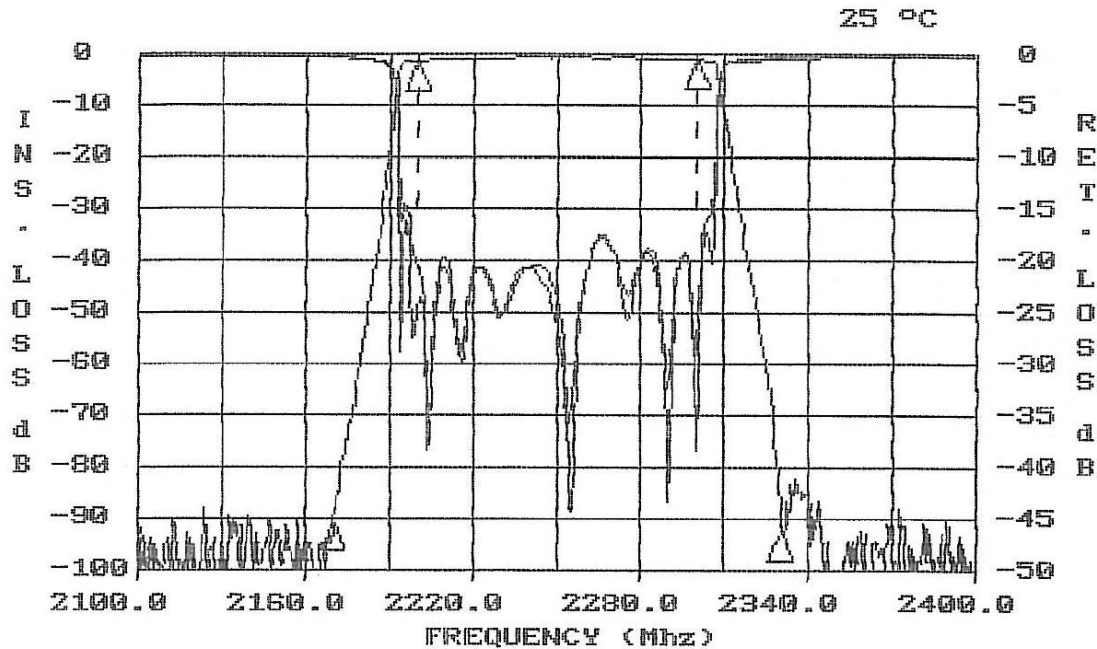
UNLESS OTHERWISE SPECIFIED  
DIMENSIONS ARE IN INCHES.  
TOLERANCES ARE:

INCHES	MILLIMETERS
.XX ± .02	[X.X] ± .5
.XXX ± .010	[X.XX] ± .25
.XXXX ± .0020	[X.XXX] ± .051

This document contains proprietary information and is to be used only for the purposes for which it has been supplied and is not to be duplicated or disclosed in whole or in part without written permission from a duly authorized representative of Knowles.

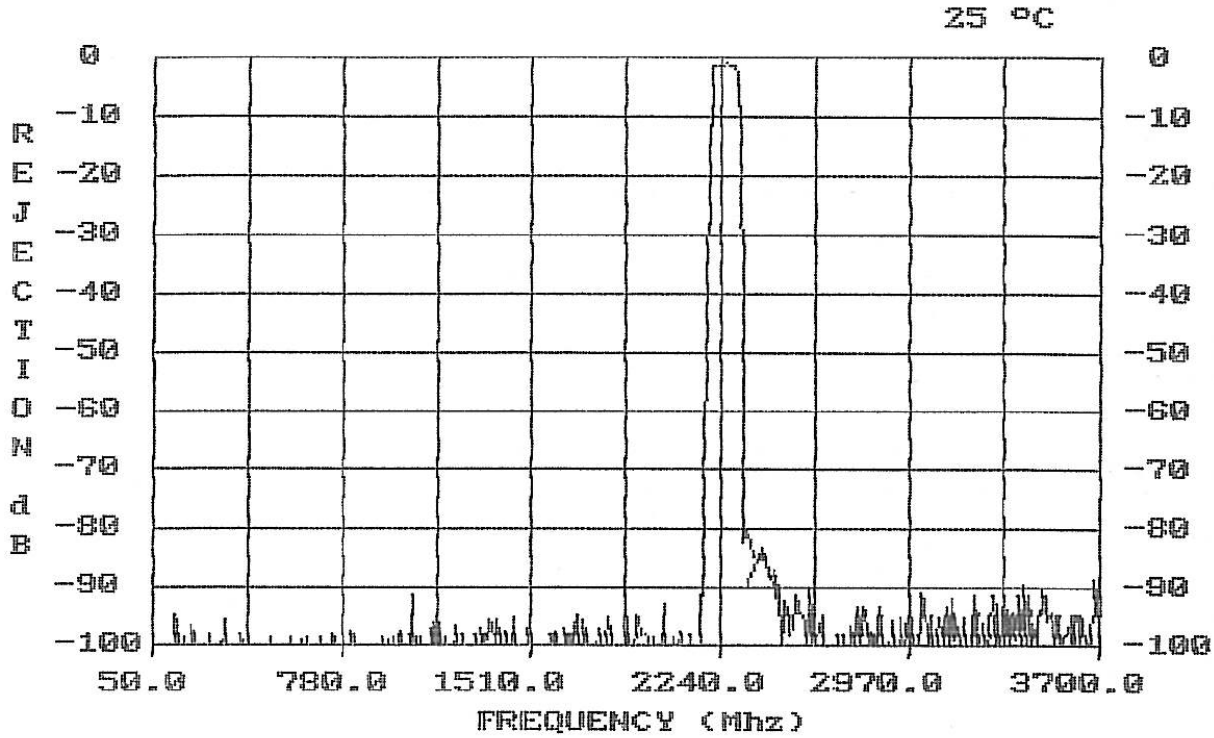
Phone: 1-315-655-8710 • Email: KPD-NA-sales@knowles.com • www.knowlesc capacitors.com

Product and product information are subject to change without notice.



FREQUENCY (MHZ)	VALUE	SPEC	COMMENTS
2200 - 2300	-1.17 dbA	-1.5 dbA MAX	
2200 - 2300	-.616 dbC	-.75 dbC MAX	
2100 - 2170	-85.3 dbC	-80 dbC MIN	
2330 - 2390	-81.9 dbC	-80 dbC MIN	
	VALUE	SPEC	COMMENTS
	113.8 MHZ	50 MHZ MIN	-3dbA Width
	113.8 MHZ	1000 MHZ MAX	-3dbA Width
	2250.22MHZ	2200 MIN	Center Freq.
	2250.22MHZ	2300 MAX	Center Freq.
FREQUENCY (MHZ)	VALUE	SPEC	COMMENTS
2200 - 2300	-17.9	-15 db MIN	(S11) - VSWR
2200 - 2300	-17.6	-15 db MIN	(S22) - VSWR

This document contains proprietary information and is to be used only for the purposes for which it has been supplied and is not to be duplicated or disclosed in whole or in part without written permission from a duly authorized representative of Knowles.



FREQUENCY (MHZ)	VALUE	SPEC	COMMENTS
50 -- 2100	-90.8 dbC	-80 dbC MIN	
2390 -- 3600	-82.6 dbC	-80 dbC MIN	

This document contains proprietary information and is to be used only for the purposes for which it has been supplied and is not to be duplicated or disclosed in whole or in part without written permission from a duly authorized representative of Knowles.

Phone: 1-315-655-8710 • Email: [KPD-NA-sales@knowles.com](mailto:KPD-NA-sales@knowles.com) • [www.knowlescapacitors.com](http://www.knowlescapacitors.com)

Product and product information are subject to change without notice.