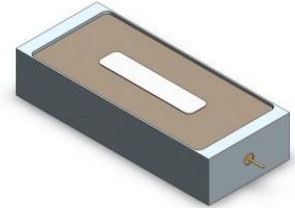


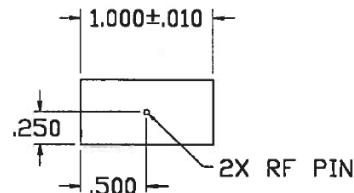
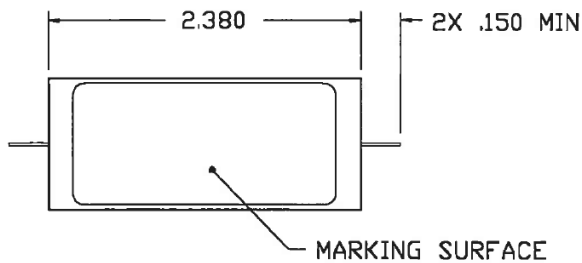
Lumped Lowpass Filter

Features/Benefits

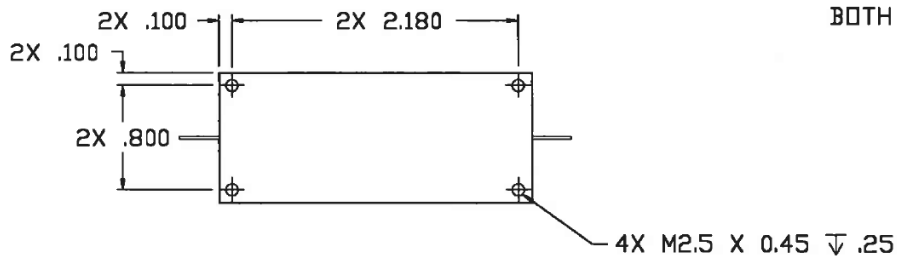
- Surface Mount
- Made in U.S.A.



Parameter	Specification
Cutoff Frequency (Fc)	10 MHz
Passband	-1.5 dBa max from 1 MHz to 10 MHz
VSWR	1.5:1 max from 1 MHz to 10 MHz
Rejection	-65 dBc min @ 20 MHz -80 dBc min from 25 MHz to 500 MHz
Temperature, Operating	0°C to +60°C
Temperature, Storage	0°C to +60°C
Temperature, Soldering	+215°C MAX (use convective reflow)
Mechanical Dimensions	2.380 x 1.000 x 0.500 inches [60.45 x 25.4 x 12.7 mm] (L X W X H)



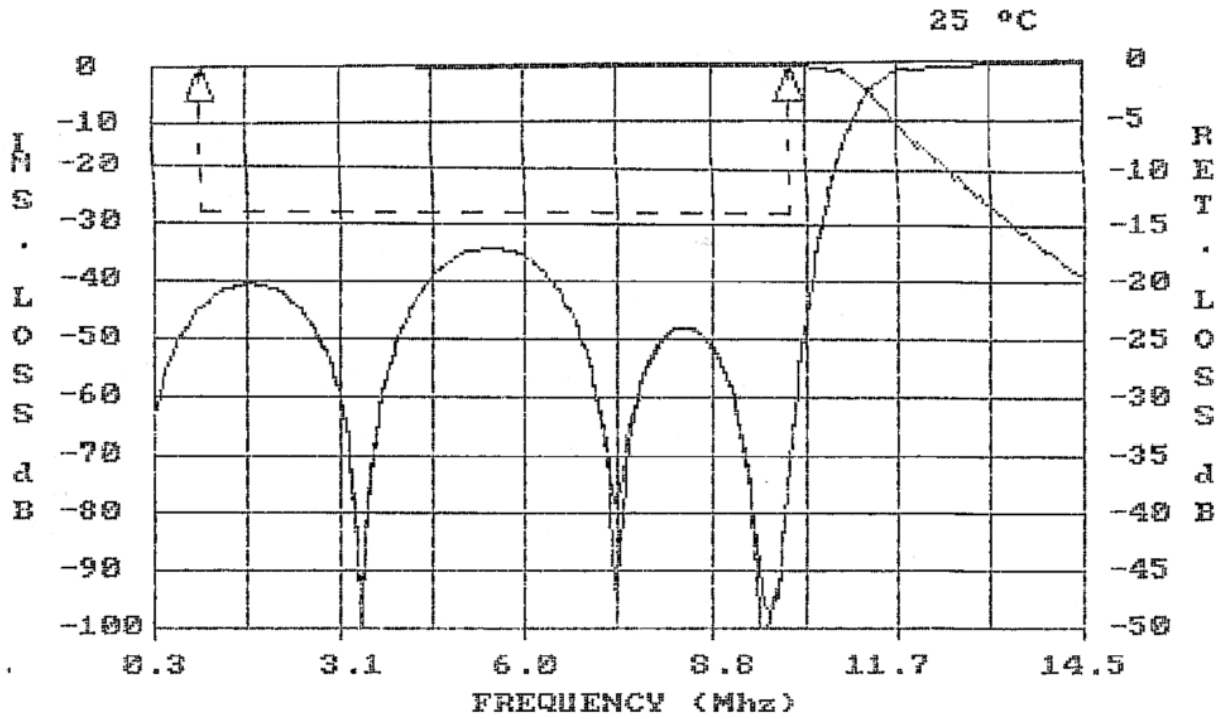
BOTH SIDES



UNLESS OTHERWISE SPECIFIED
DIMENSIONS ARE IN INCHES.
TOLERANCES ARE:

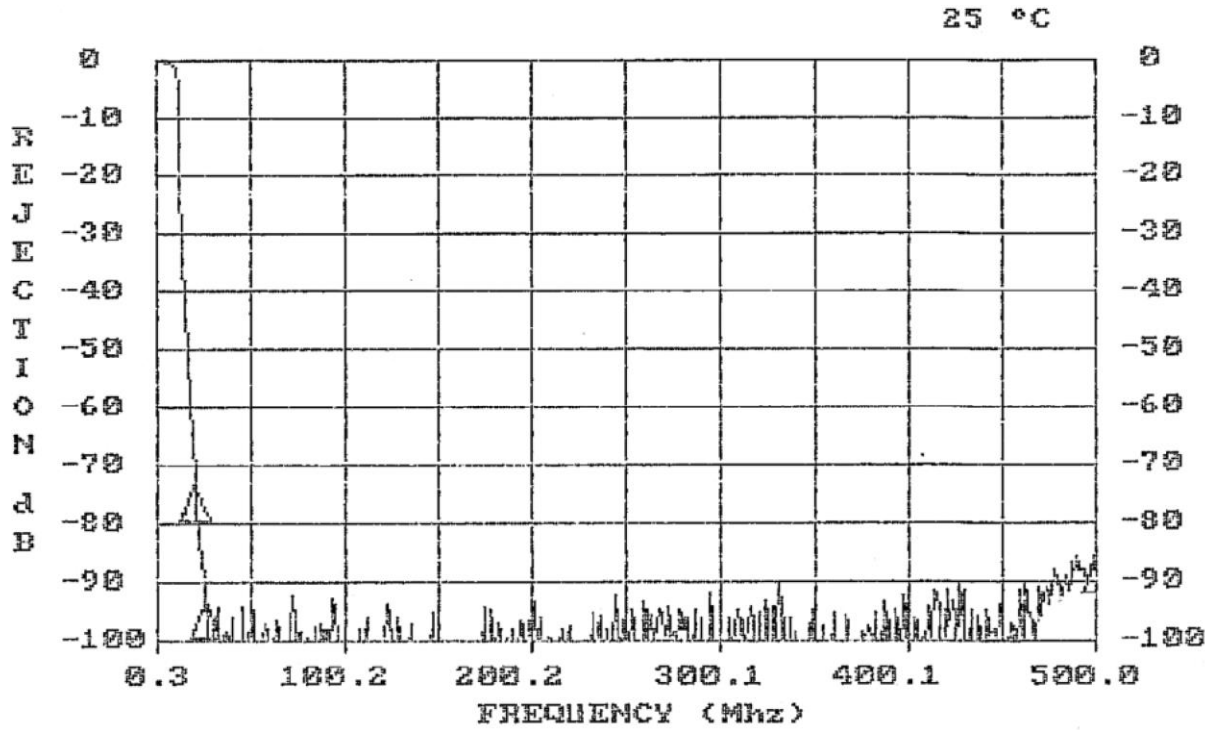
INCHES	MILLIMETERS
.XX ± .02	[X.X] ± .5
.XXX ± .020	[X.XX] ± .51
.XXXX ± .0020	[X.XXX] ± .051

This document contains proprietary information and is to be used only for the purposes for which it has been supplied and is not to be duplicated or disclosed in whole or in part without written permission from a duly authorized representative of Knowles.



FREQUENCY (MHZ)	VALUE	SPEC	COMMENTS
1 - 10	-0.509 dbA	-1.5 dbA MAX	
FREQUENCY (MHZ)		SPEC	COMMENTS
1 - 10		1.5 :1 MAX	(S11) - VSWR
1 - 10		1.5 :1 MAX	(S22) - VSWR

This document contains proprietary information and is to be used only for the purposes for which it has been supplied and is not to be duplicated or disclosed in whole or in part without written permission from a duly authorized representative of Knowles.



FREQUENCY (MHZ)	VALUE	SPEC	COMMENTS
20	-71.9 dB	-65 dB MIN	
25 - 500	-85.5 dB	-80 dB MIN	

This document contains proprietary information and is to be used only for the purposes for which it has been supplied and is not to be duplicated or disclosed in whole or in part without written permission from a duly authorized representative of Knowles.