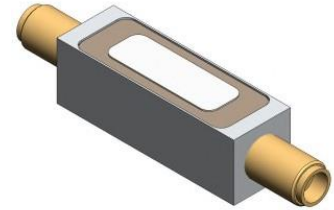


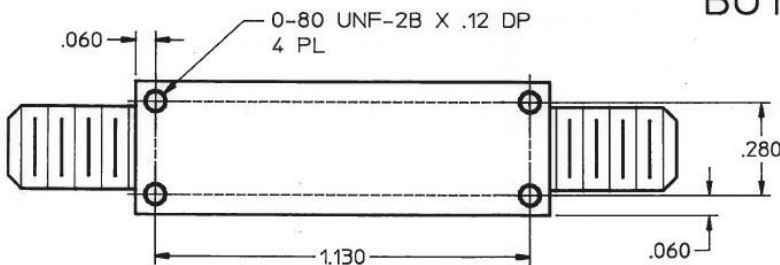
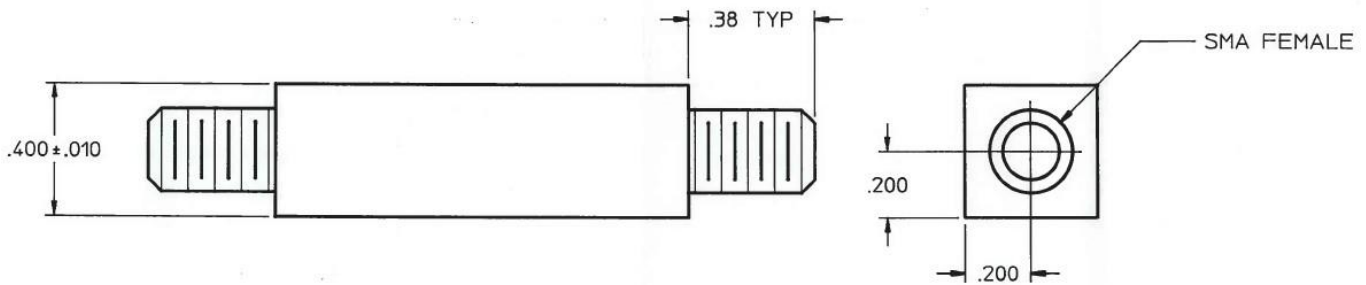
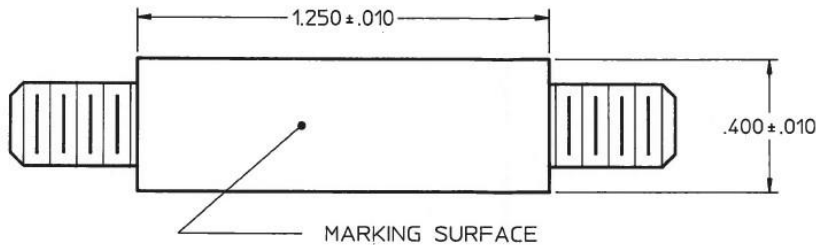
Lumped Lowpass Filter

Features/Benefits

- SMA-F Connectors
- Made in U.S.A.



Parameter	Specification
Cutoff Frequency (Fc)	1250 MHz
Passband	-0.5 dBa max from 10 MHz to 1250 MHz
Return Loss	-20 dB min from 10 MHz to 1250 MHz
Rejection	-81 dBa min from 1840 MHz to 1940 MHz
Temperature, Operating	0°C to +40°C
Temperature, Storage	-25°C to +105°C
Mechanical Dimensions	1.250 x 0.400 x 0.400 inches [31.75 x 10.16 x 10.16 mm] (L X W X H)

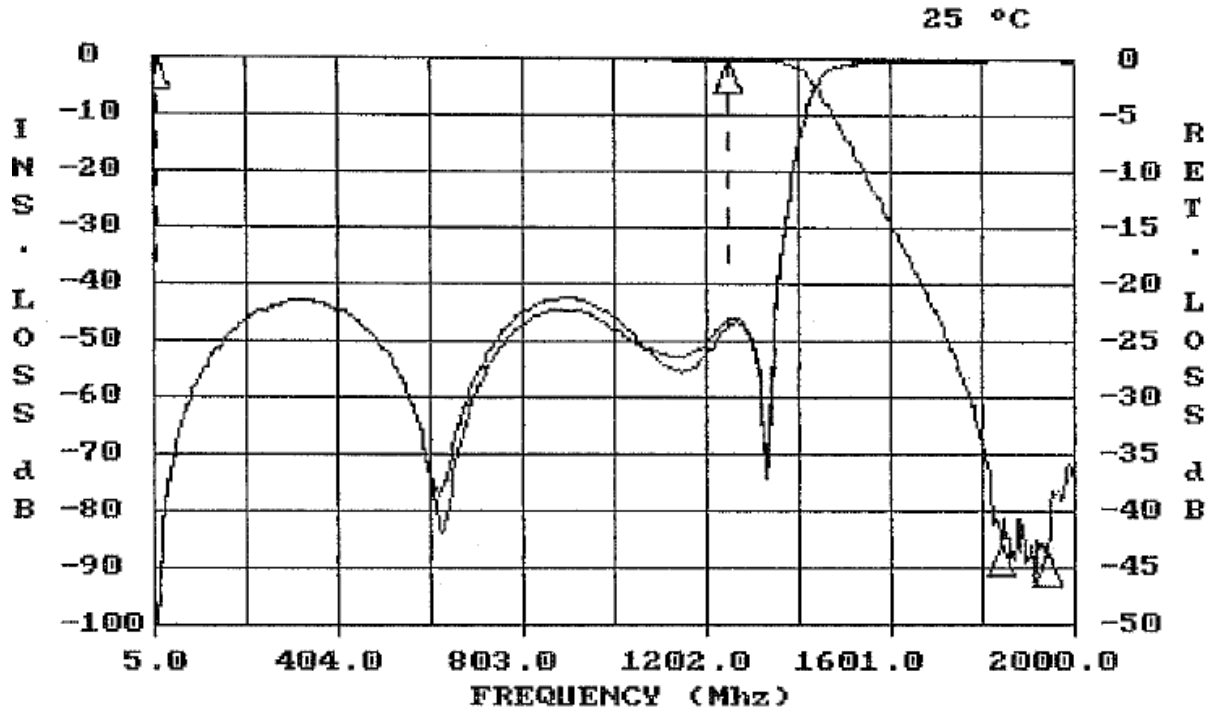


BOTH ENDS TYP

UNLESS OTHERWISE SPECIFIED
DIMENSIONS ARE IN INCHES.
TOLERANCES ARE:

INCHES	MILLIMETERS
.XX ± .02	[X.X] ± .5
.XXX ± .010	[X.XX] ± .25
.XXXX ± .0020	[X.XXX] ± .051

This document contains proprietary information and is to be used only for the purposes for which it has been supplied and is not to be duplicated or disclosed in whole or in part without written permission from a duly authorized representative of Knowles.



FREQUENCY (MHZ)	VALUE	SPEC	COMMENTS
10 - 1250	-0.28 dbA	-0.5 dbA MAX	
1840 - 1940	-81.1 dbA	-81 dbA MIN	

FREQUENCY (MHZ)	VALUE	SPEC	COMMENTS
10 - 1250	-21.4	-20 db MIN	(S11) - VSWR
10 - 1250	-21.2	-20 db MIN	(S22) - VSWR

This document contains proprietary information and is to be used only for the purposes for which it has been supplied and is not to be duplicated or disclosed in whole or in part without written permission from a duly authorized representative of Knowles.

Phone: 1-315-655-8710 • Email: KPD-NA-sales@knowles.com • www.knowlescapacitors.com

Product and product information are subject to change without notice.