

37- 42 GHz 4-way Wilkinson Power Divider

PDW08324

DESCRIPTION

DLI's 37 - 42 GHz 4-way power divider / combiner offers unmatched size and performance in a surface mount configuration. This power divider utilizes DLI's low loss temperature stable materials which offer small size and minimal performance variation over temperature.

FEATURES

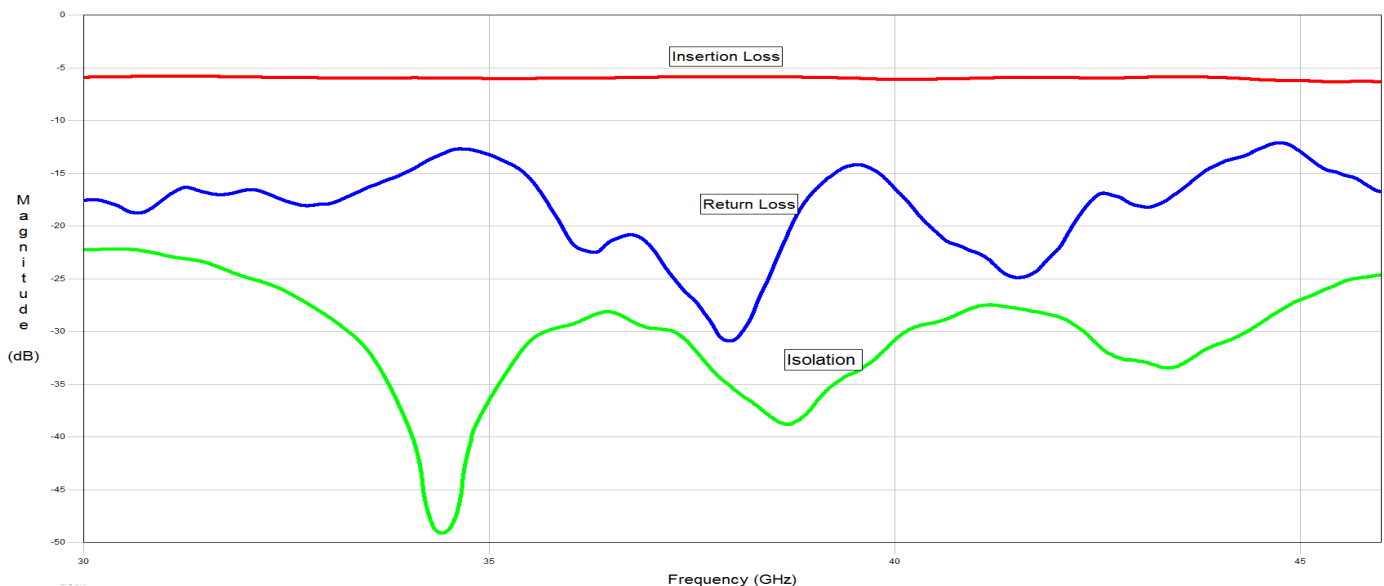
- Small Size
- Frequency Stable over Temperature
- Solder Surface Mount Package
- Excellent Repeatability
- Moisture Sensitivity Level: MSL 1
- Operating Temp: -55°C to +125°C
- Characteristic Impedance: 50Ω

SPECIFICATIONS*

Parameter	Frequency Range (GHz)	Min	Typ.	Max
Nominal Power Splitting (dB)	37 - 42	—	6.0	6.7
Nominal Phase Shift (Deg)			0.0	
Amplitude Balance (dB)				± .4
Phase Balance (Deg)				± 5.0
Excess Insertion Loss (dB)				0.7
Return Loss (dB)		10	15	—
Isolation (dB)		20	25	—

*Electrical specifications based on typical mounted performance at room temperature. Insertion loss shall vary ±0.5dB over temperature.

Typical Measured Performance

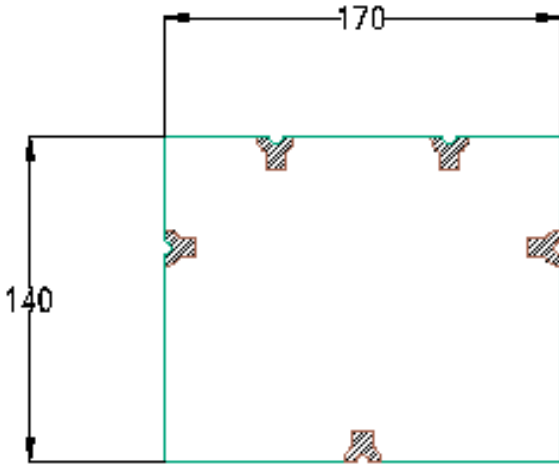


37- 42 GHz 4-way Wilkinson Power Divider

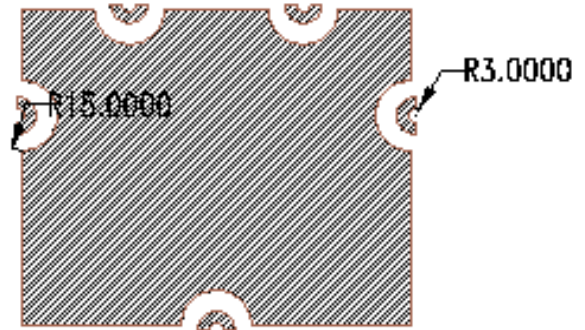
PDW08324

Physical Dimensions

Units = mils

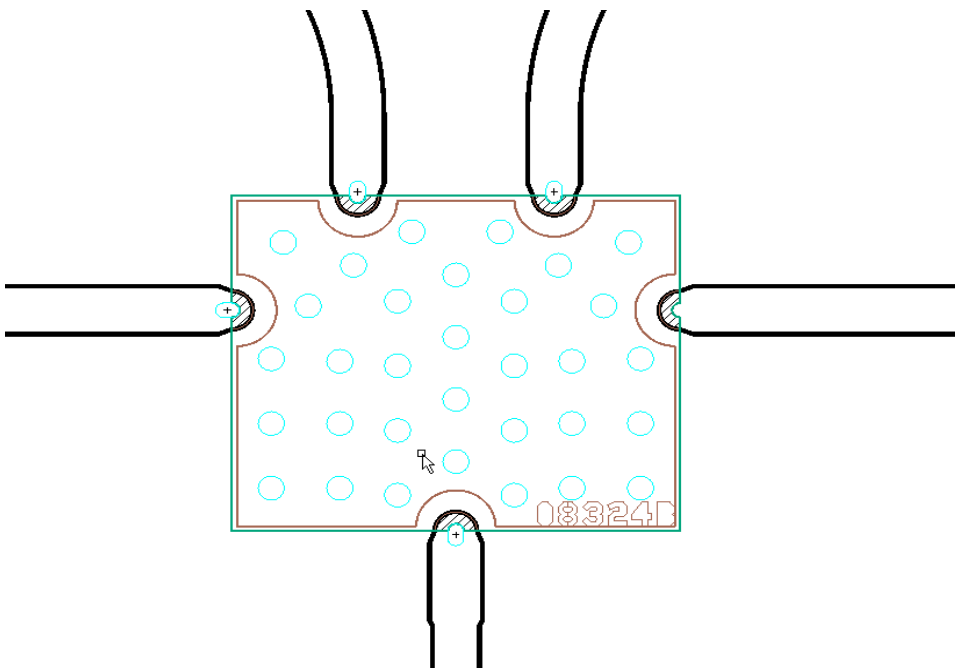


Top View



Bottom View

Recommended PCB Layout



- 50Ω trace dimensions are application specific.
- Ensure adequate grounding beneath the part.

