

## 5.6GHz 4-way Wilkinson Power Divider

**PDW08607**

[www.knowlescapacitors.com](http://www.knowlescapacitors.com)

### DESCRIPTION

DLI's 5.6GHz 4-way power divider / combiner offers unmatched size and performance in a surface mount configuration. This power divider utilizes DLI's low loss temperature stable materials which offer small size and minimal performance variation over temperature.

### FEATURES

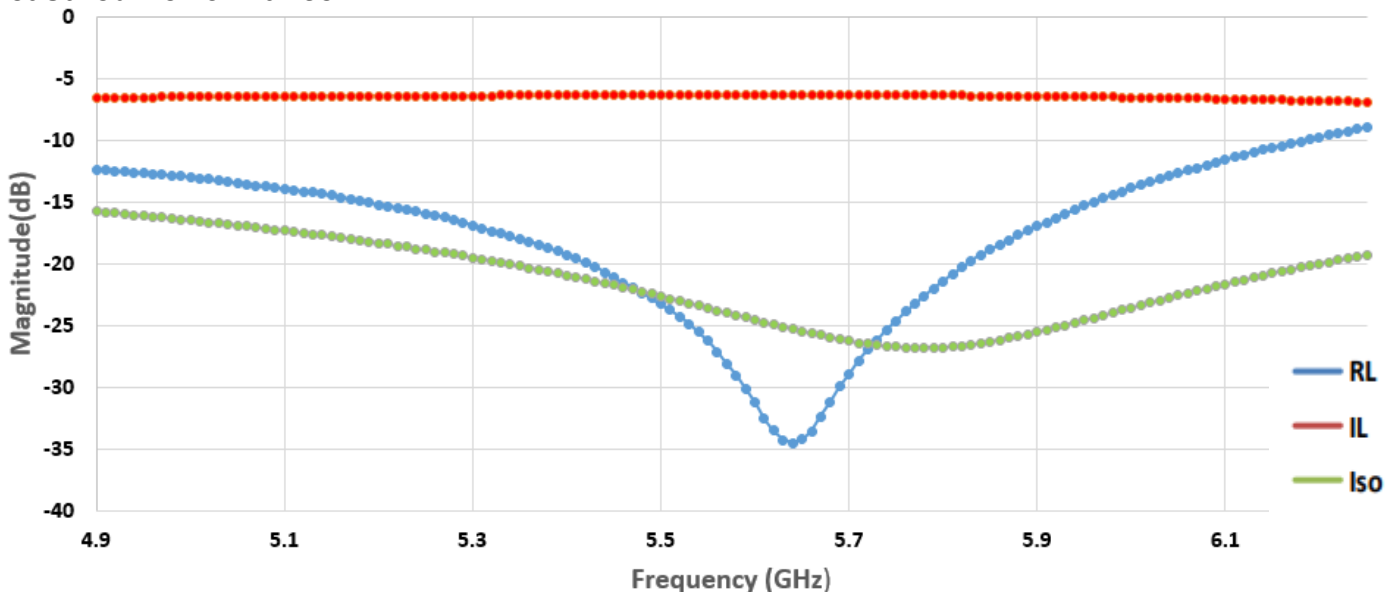
- Small Size
- Frequency Stable over Temperature
- Solder Surface Mount Package
- Excellent Repeatability
- Moisture Sensitivity Level: MSL1
- Operating & Storage Temp: -55°C to +125°C
- Characteristic Impedance: 50Ω
- Available in Tape and Reel packaging as PDW08607—T

### SPECIFICATIONS\*

Parameter	Frequency Range (GHz)	Min	Typ.	Max	
Nominal Power Splitting (dB)	5.3—5.9		6.0	6.7	
Nominal Phase Shift (Deg)			0.0		
Amplitude Balance (dB)				± 0.4	
Phase Balance (Deg)				± 4.0	
Excess Insertion Loss (dB)				0.7	
Return Loss (dB)			12	18	
Isolation (dB)			12	18	

\*Electrical specifications based on typical mounted performance at room temperature. Insertion loss shall vary up to ±0.5dB over temperature.

### Measured Performance



\*Typical measured performance mounted on connectorized RO4350B test board at 25°C with de-embedding applied .

2777 Route 20 East, Cazenovia, NY 13035| Ph.: (315)655-8710

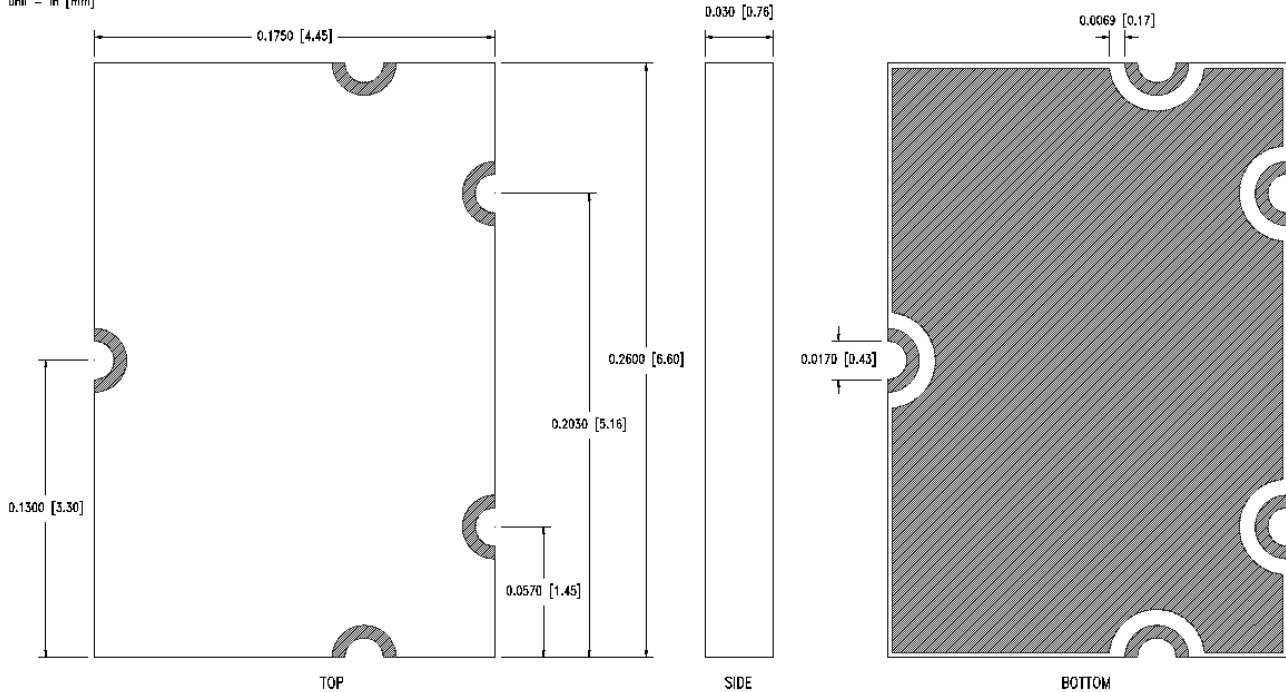
To Order Contact [KCCSales@knowles.com](mailto:KCCSales@knowles.com) | For Technical Inquiries Contact [DLIengineering@knowles.com](mailto:DLIengineering@knowles.com)

# 5.6GHz 4-way Wilkinson Power Divider

**PDW08607**

[www.knowlesc capacitors.com](http://www.knowlesc capacitors.com)

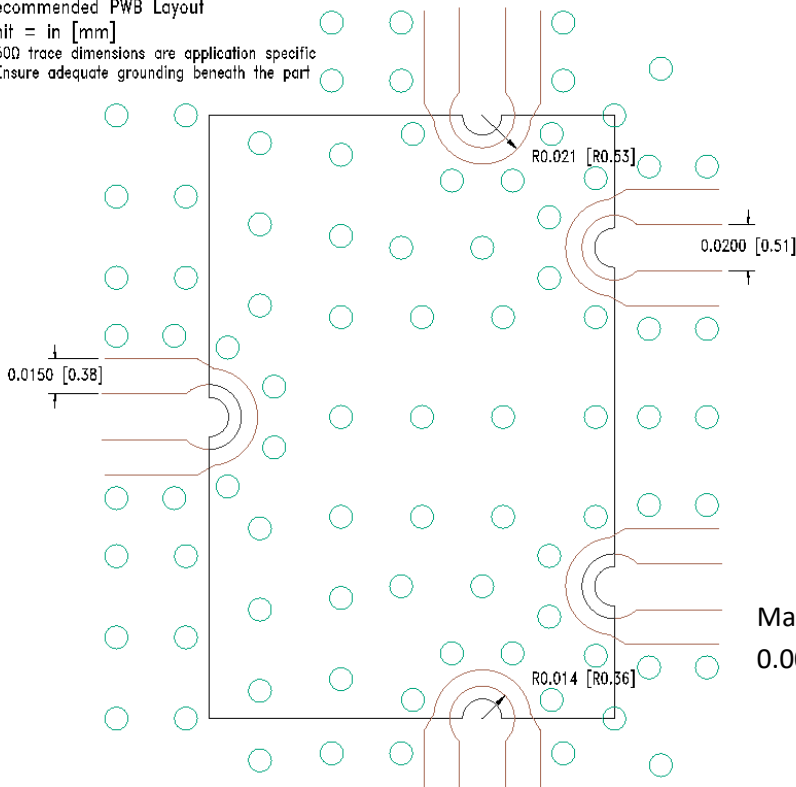
Physical Dimensions  
 unit = in [mm]



\* 3-6 micro-inch Au Over 100 micro-inches of Ni

Recommended PWB Layout

- unit = in [mm]
- 500 trace dimensions are application specific
- Ensure adequate grounding beneath the part



Material : RO4350B | Thickness : 0.010" +/- 0.001"

2777 Route 20 East, Cazenovia, NY 13035 | Ph.: (315)655-8710

To Order Contact [KCCSales@knowles.com](mailto:KCCSales@knowles.com) | For Technical Inquiries Contact [DLengineering@knowles.com](mailto:DLengineering@knowles.com)