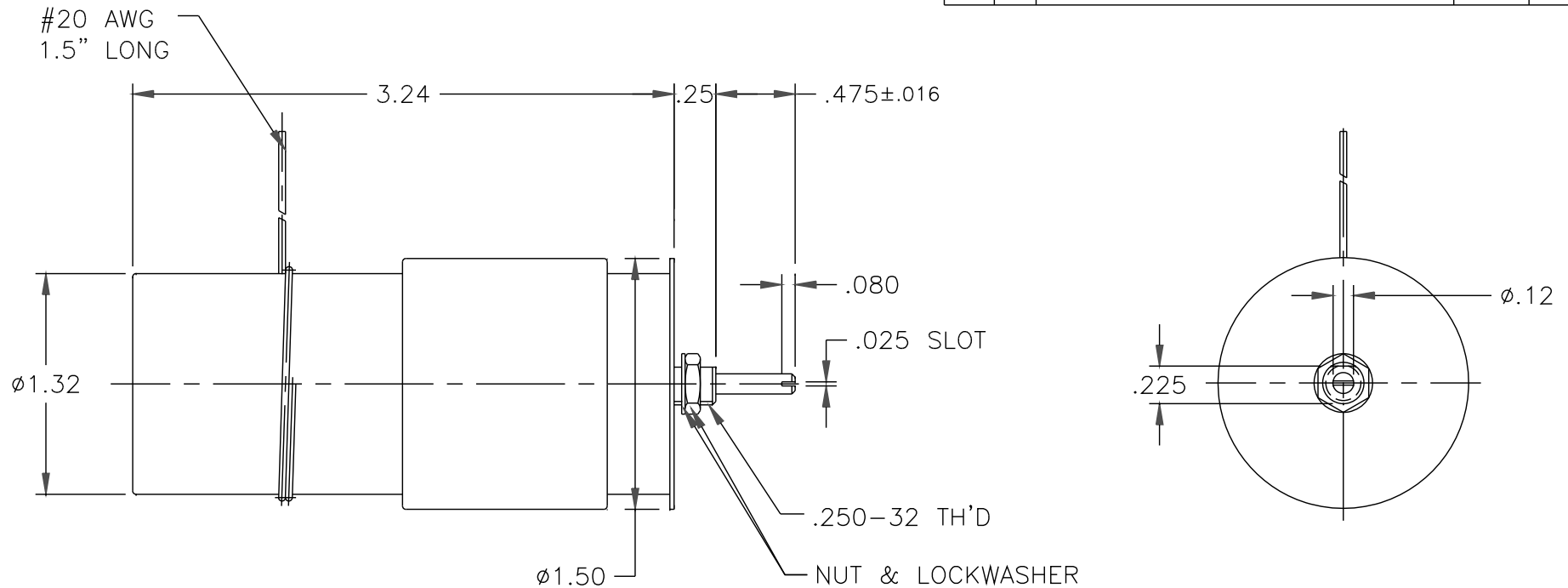


DATE	SYM	REVISION	RECORD	AUTH	DR	CK



NOTES:

1. CAPACITANCE RANGE, pF: 5.0 TO 85.0
2. WORKING VOLTAGE AT 85 pF: 3000 VDC
3. WITHSTANDING VOLTAGE AT 85 pF: 6000 VDC
4. Q FACTOR AT 25 MHz: 600 MIN.
5. INSULATION RESISTANCE:  $10^6$  MEGOHMS AT 25°C
6. TUNING TORQUE: 0.5 TO 4.0 IN-OZ
7. OPERATING TEMPERATURE: -55°C TO +125°C

TOLERANCES (EXCEPT AS NOTED)		VOLTRONICS CORPORATION 100 FORD RD. DENVER N.J.			
DECIMAL XXX ±.005 XX ±.016		SCALE 1 : 1		DRAWN BY A.SHTABNAYA	
FRACTIONAL —		APPROVED BY A.GOLDBERG			
ANGULAR —		TITLE OUTLINE DWG. NMNT85E			
DATE 6/06/11		DRAWING NUMBER 71,099			