

8 to 12GHz 10dB Directional Coupler

FPC06074

DESCRIPTION

DLI introduces its new high frequency surface mountable catalog direction couplers. These couplers incorporate DLI's high dielectric ceramic materials which provide small size and minimal performance variation over temperature. The components are well matched for monitoring incident and reflected power.

FEATURES

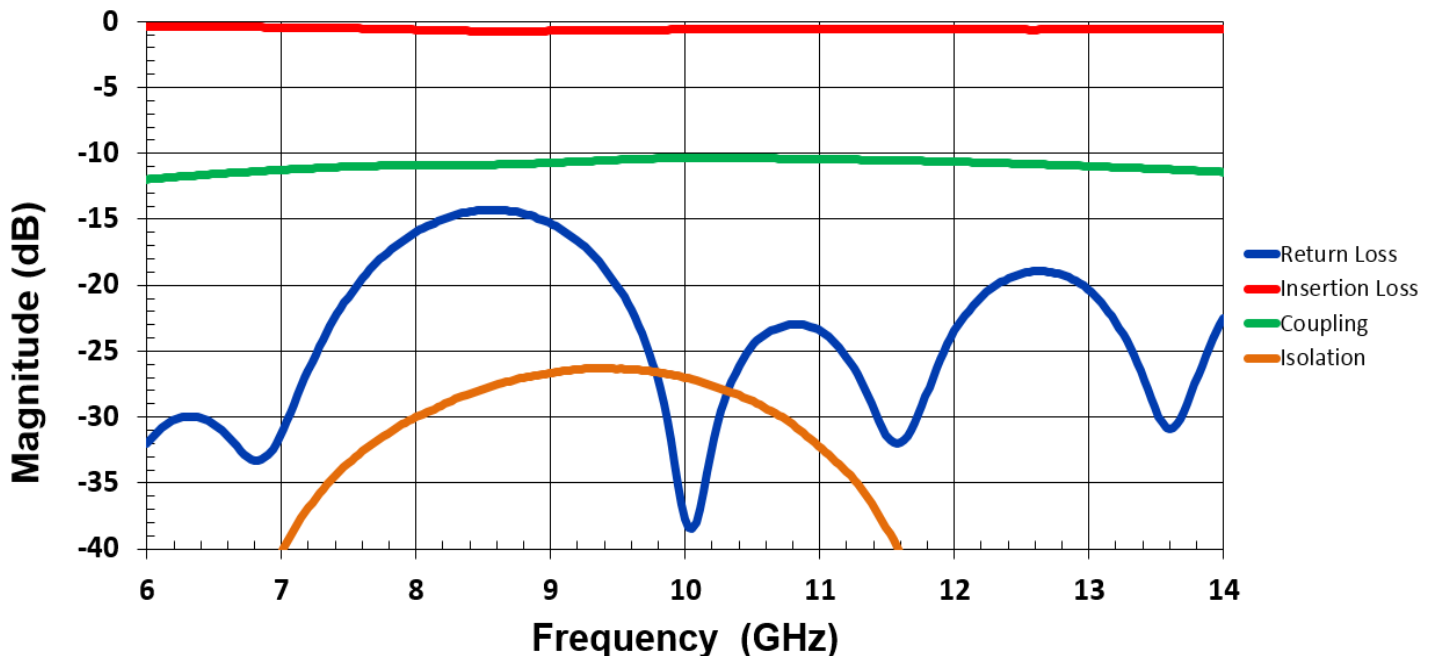
- Small Size
- Fully Shielded Component
- Solder Surface Mount Package
- Moisture Sensitivity Level: MSL1
- Frequency Stable over Temperature
- Operating & Storage Temp: -55°C to +125°C
- Characteristic Impedance: 50Ω

SPECIFICATIONS*

| Parameter | Frequency (GHz) | Min | Max |
|-------------------------------|--|-----|-----|
| Passband Insertion Loss* (dB) | 8 - 12 | | 0.5 |
| Passband Return Loss (dB) | | 14 | |
| Coupling (dB) | | 10 | 12 |
| Directivity (dB) | | 15 | |
| Input Power | | | TBD |
| Size (LxWxH) | 0.120 x .080 x .015 in 3.048 x 2.032 x .381mm | | |

*Electrical specifications based on typical mounted performance at room temperature. Insertion loss shall vary ±0.5dB over temperature.

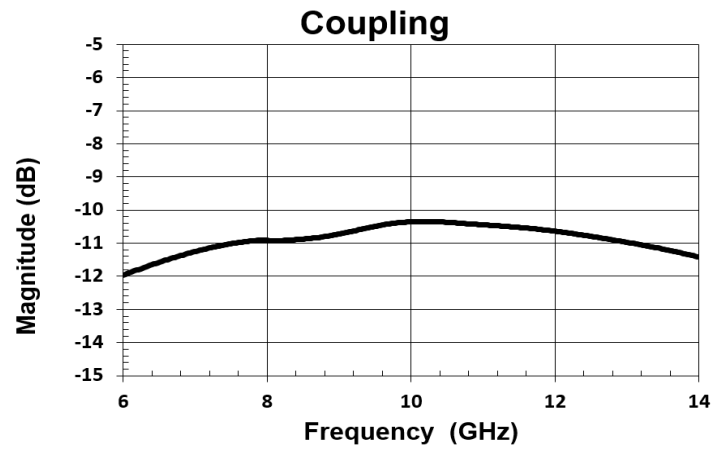
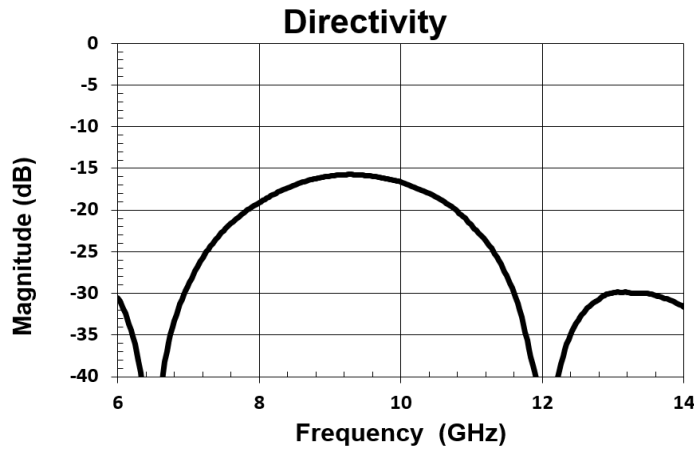
Typical Measured Performance



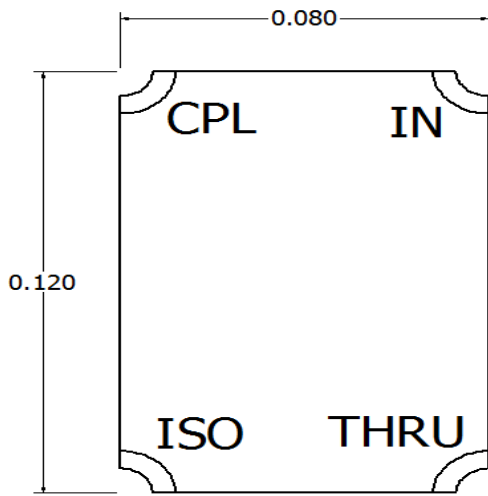
*Typical measured performance mounted on RO4350B test board at 25°C.

8 to 12GHz 10dB Directional Coupler

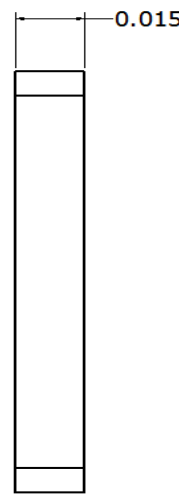
FPC06074



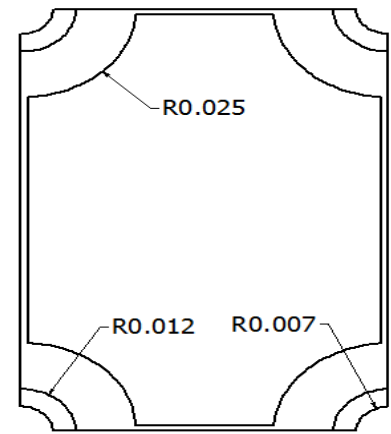
Physical Dimensions



Top

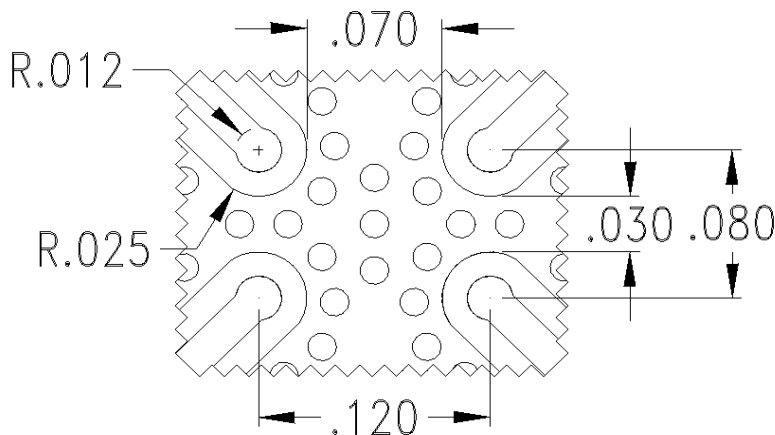


Side



Bottom

Recommended PCB Layout



- 50Ω trace dimensions are application specific.
- Ensure adequate grounding beneath the part.
- Trace feed locations can be horizontal, vertical or angled.

