

## 12 GHz Surface Mount High-Pass Filter

### H120XHXS

#### DESCRIPTION

DLI introduces its new high frequency surface mountable catalog high pass filters. These HPF's incorporate DLI's high dielectric ceramic materials which provide small size and minimal performance variation over temperature. The catalog HPF's are offered in a variety of frequency bands, which offers a drop in solution for high frequency attenuation.

#### FEATURES

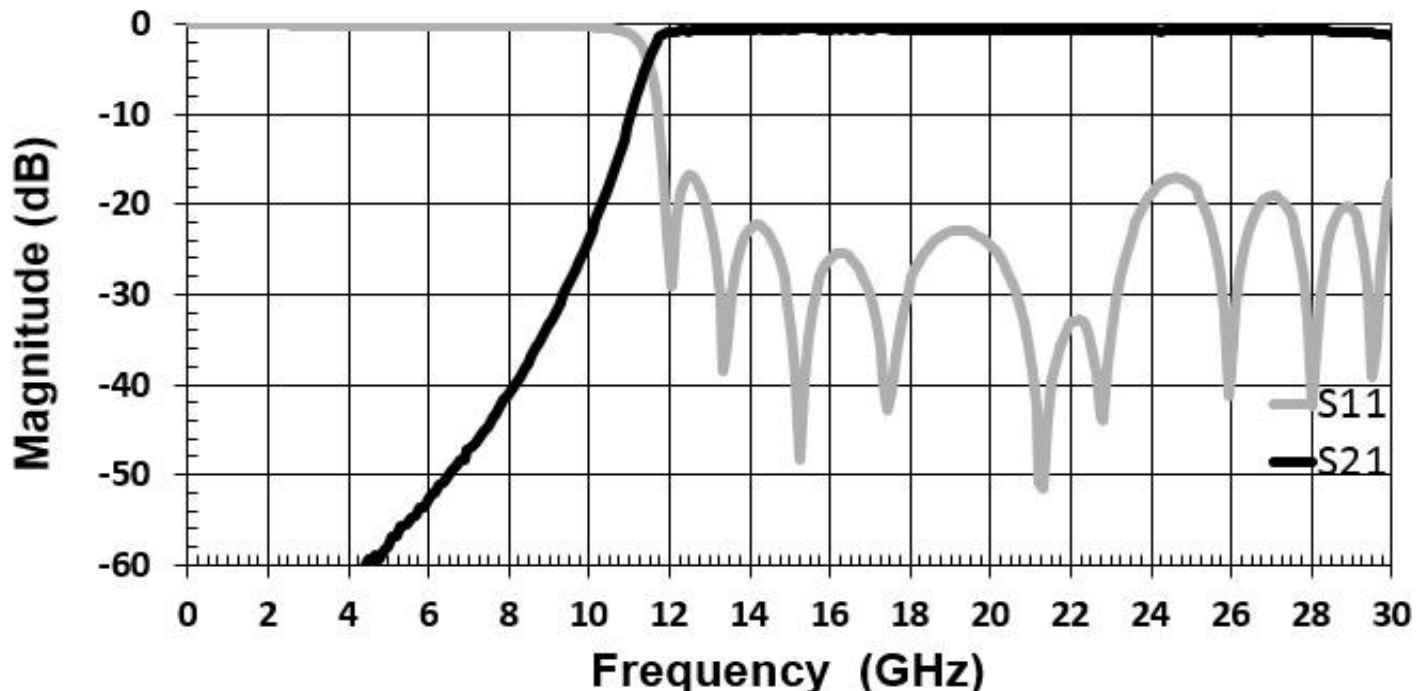
- Small Size
- Fully Shielded Component
- Solder Surface Mountable
- Moisture Sensitivity Level: MSL1
- Frequency Stable over Temperature
- Operating & Storage Temp: -55°C to +125°C
- Characteristic Impedance: 50Ω

#### SPECIFICATIONS\*

Parameter	Frequency (GHz)	Min	Typ.	Max
Insertion Loss* (dB)	12.5 - 30		1.0	2.5
Return Loss (dB)		12	16	
Low side Rejection (dB)	DC - 9	30		
Input Power (W)				TBD
Size (LxWxH)	0.450 x 0.175 x 0.098 in 11.43 x 4.45 x 2.49 mm			

\*Electrical specifications based on typical probed performance at room temperature. Insertion loss shall vary  $\pm 0.5$ dB over temperature.

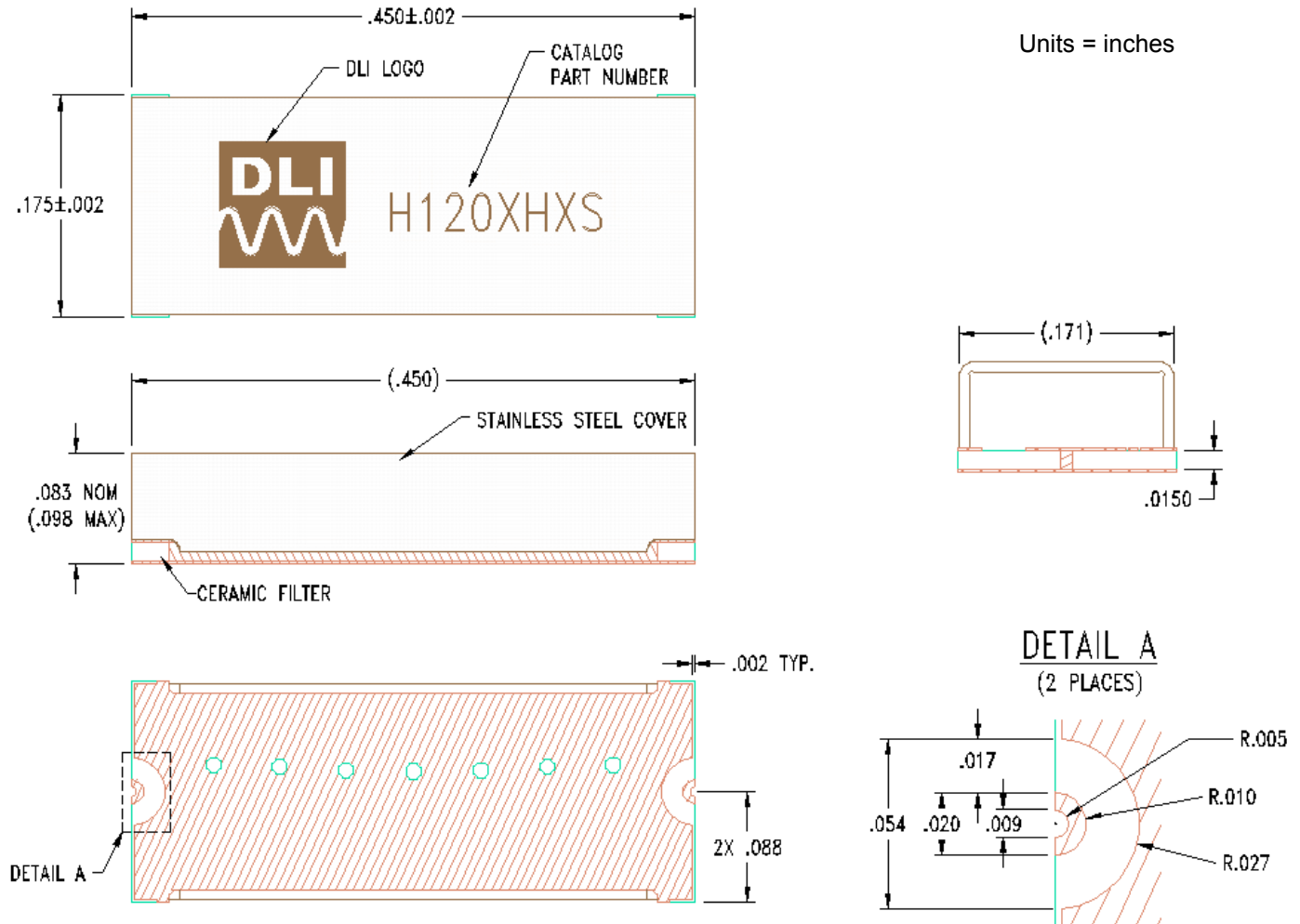
#### Typical Preliminary Simulated Performance



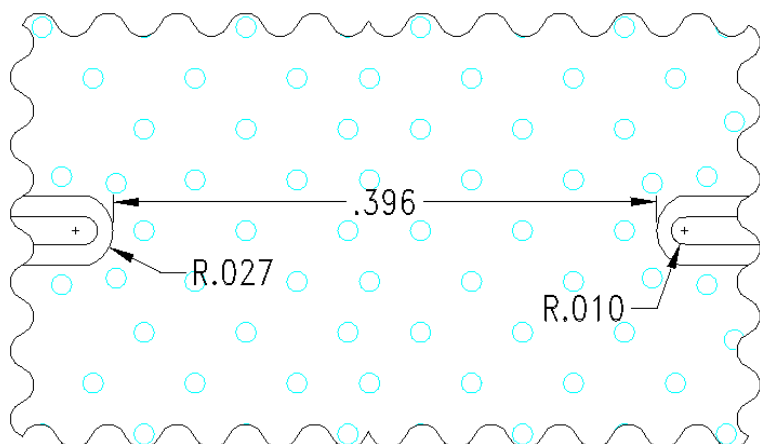
## 12 GHz Surface Mount High-Pass Filter

### H120XHXS

#### Physical Dimensions



#### Recommended PCB Layout



- 50Ω trace dimensions are application specific.
- Ensure adequate grounding beneath the filter.

