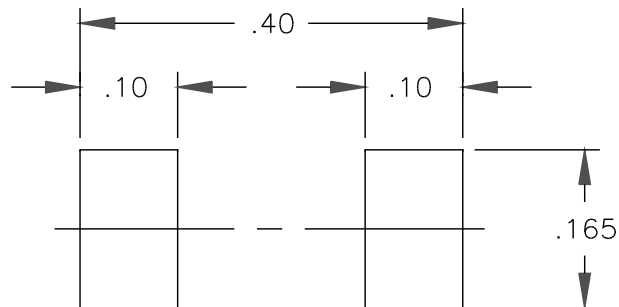
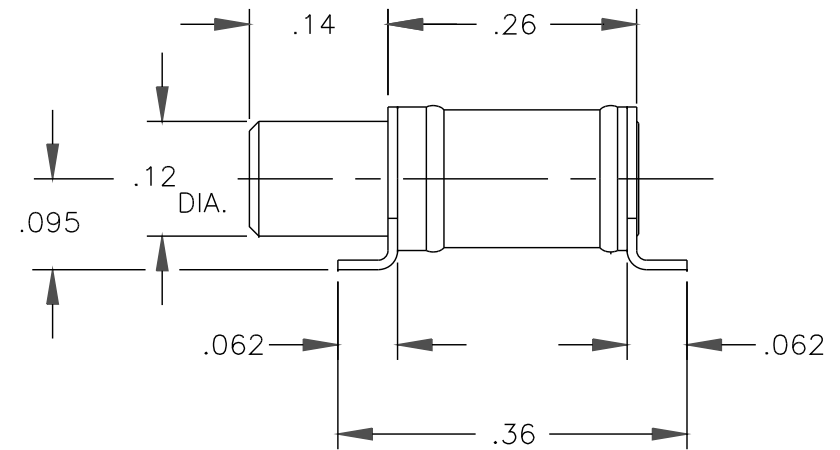
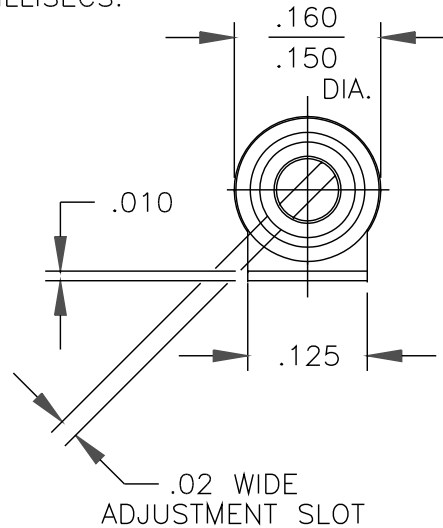


NOTES:

1. CAPACITANCE RANGE, pF: 0.5 TO 8.0
2. DC WORKING VOLTAGE AT 8.0 pF: 125 VDC
3. DC WITHSTANDING VOLTAGE AT 8.0 pF: 250 VDC
4. Q FACTOR AT 100 MHz AND 8.0 pF: 3000 MIN.
5. INSULATION RESISTANCE: 10^6 MEGOHMS AT 25°C
6. TEMPERATURE COEFFICIENT: 0 ± 100 PPM/°C
7. OPERATING TEMPERATURE: -65°C TO +125°C
8. TUNING TORQUE: 0.3 TO 1.0 IN-OZ
9. VIBRATION: 50g AT 10-2000 Hz
10. SHOCK: 1500g, 0.5 MILLISECS.



FOOT PRINT

DATE	SYM	REVISION RECORD	AUTH	DR	CK
7/20/99	A	NOTE 4: 3000 WAS 2000		AS	
4/06/2000	B	NOTE 8: 0.3 TO 1.0 WAS 0.1 TO 1.0	SN	VK	SN

TOLERANCES (EXCEPT AS NOTED)		VOLTRONICS CORPORATION 100 FORD RD. DENVILLE N.J.			
DECIMAL XXX ±.005 XX ±.016		SCALE 5 : 1	DRAWN BY V.KALIKHOVSKY		
			APPROVED BY D.DITLYA		
FRACTIONAL —		TITLE OUTLINE DWG. A1J8			
ANGULAR —		DATE 5/30/97	DRAWING NUMBER 7,773 REV.B		