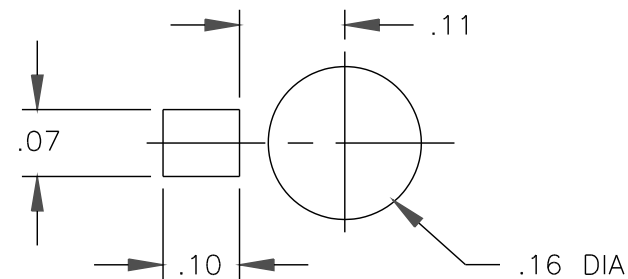


DATE	SYM	REVISION RECORD	AUTH	DR	CK
4/02 97	B	REDRAWN		VK	DD
7/20 99	C	NOTE 4: 4000 WAS 2000		AS	
4/06 2000	D	NOTE 8: 0.3 TO 1.0 WAS 0.1 TO 1.0	SN	VK	SN

NOTES:

1. CAPACITANCE RANGE, pF: 0.45 TO 4.0
2. DC WORKING VOLTAGE AT 4.0 pF: 250 VDC
3. DC WITHSTANDING VOLTAGE AT 4.0 pF: 500 VDC
4. Q FACTOR AT 100 MHz AND 4.0 pF: 4000 MIN.
5. INSULATION RESISTANCE: 10^6 MEGOHMS AT 25°C
6. TEMPERATURE COEFFICIENT: 0 ± 50 PPM/°C
7. OPERATING TEMPERATURE: -65°C TO +125°C
8. TUNING TORQUE: 0.3 TO 1.0 IN-OZ
9. VIBRATION: 50g AT 10-2000 Hz
10. SHOCK: 1500g, 0.5 MILLISECS.



FOOT PRINT

TOLERANCES (EXCEPT AS NOTED)		VOLTRONICS CORPORATION 100 FORD RD. DENVILLE N.J.	
DECIMAL XXX ±.005 XX ±.016		SCALE 5 : 1	DRAWN BY D.DITLYA
		APPROVED BY S.NEWMAN	
FRACTIONAL —	TITLE OUTLINE DWG. A1M4		
ANGULAR —	DATE 5/8/96	DRAWING NUMBER 7,718 REV.D	