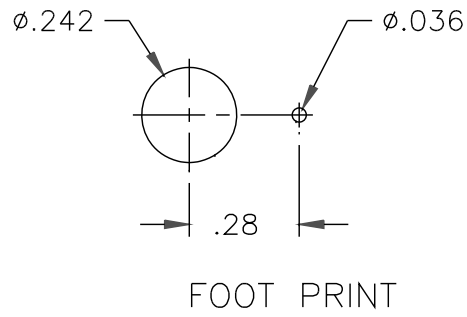
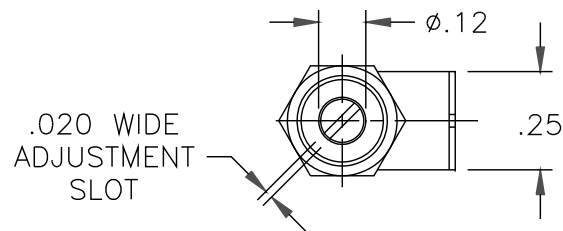
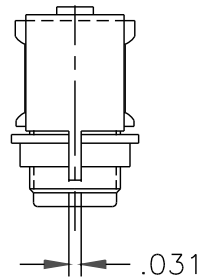
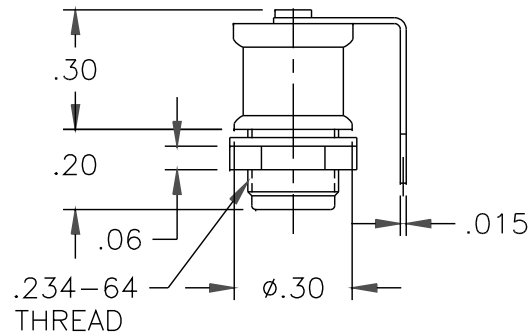


| DATE | SYM | REVISION | RECORD | AUTH | DR | CK |
|------|-----|----------|--------|------|----|----|
|      |     |          |        |      |    |    |
|      |     |          |        |      |    |    |
|      |     |          |        |      |    |    |
|      |     |          |        |      |    |    |
|      |     |          |        |      |    |    |



#### NOTES:

1. CAPACITANCE RANGE, pF: 1.0 TO 23.0
2. DC WORKING VOLTAGE AT 23.0 pF: 125
3. DC WITHSTANDING VOLTAGE AT 23.0 pF: 250
4. Q FACTOR AT 100 MHz: 2000 MIN
5. INSULATION RESISTANCE:  $10^6$  MEGOHMS AT 25°C.
6. TEMPERATURE COEFFICIENT:  $50 \pm 50$  PPM/°C
7. OPERATING TEMPERATURE: -65°C TO +125°C
8. TUNING TORQUE: 0.5 TO 5.0 IN-QZ
9. ROTATIONAL LIFE: 600 TURNS
10. VIBRATION: 50g AT 10-2000 Hz
11. SHOCK: 1500g, 0.5 MILLISECS.
12. SEAL: 40 PSI

|                                  |  |                          |                           |
|----------------------------------|--|--------------------------|---------------------------|
| TOLERANCES<br>(EXCEPT AS NOTED)  | VOLTRONICS CORPORATION<br>100 FORD RD. DENVILLE N.J. |                          |                           |
| DECIMAL<br>XXX ±.005<br>XX ±.016 |  | SCALE<br>2 : 1           | DRAWN BY<br>A.SHTABNAYA   |
|                                  |  |                          | APPROVED BY<br>A.GOLDBERG |
| FRACTIONAL<br>—                  | TITLE<br>OUTLINE DWG. AC25SD                         |                          |                           |
| ANGULAR<br>—                     | DATE<br>2/02/10                                      | DRAWING NUMBER<br>70,864 |                           |