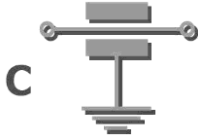
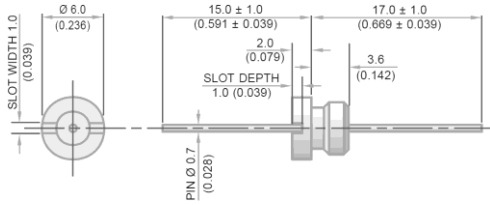


Feedthrough EMI Filter Datasheet
M5 Thread : 6.0mm Round Head)

Circuit Configuration



Dimensions mm (inches)



M5 x 0.8 - 6g Thread

Electrical Details	
Electrical Configuration	C Filter
Capacitance Measurement	@ 1000hr Point
Current Rating	10A
Insulation Resistance (IR)	10GΩ or 1000ΩF
Temperature Rating	-55°C to +125°C
Ferrite Inductance (Typical)	Not Applicable
Mechanical Details	
Head Diameter	6.0mm (0.236")
Nut A/F	N/a. For use in tapped hole
Washer Diameter	N/a
Mounting Torque	0.3Nm (2.65lbf in) max.
Mounting Hole	M5 x 0.8 - 6h
Max. Panel Thickness	N/a
Weight (Typical)	1.2g (0.04oz)
Finish	Silver plate on copper undercoat

Product Code	Capacitance ±20%	Dielectric	Rated Voltage (dc)	DWV (dc)	Typical Insertion Loss (db)					
					0.01MHz	0.1MHz	1MHz	10MHz	100MHz	1GHz
*SFUMC5000100ZC	10pF -20% / +80%	C0G	500#	750						4
SFUMC5000150ZC	15pF -20% / +80%	C0G	500#	750						7
SFUMC5000220ZC	22pF -20% / +80%	C0G	500#	750						10
SFUMC5000330ZC	33pF -20% / +80%	C0G	500#	750						12
*SFUMC5000470ZC	47pF -20% / +80%	C0G	500#	750					1	15
*SFUMC5000680MC	68pF	C0G	500#	750					2	18
*SFUMC5000101MC	100pF	C0G	500#	750					4	22
SFUMC5000151MC	150pF	C0G	500#	750					7	25
*SFUMC5000221MC	220pF	C0G	500#	750					10	29
*SFUMC5000331MC	330pF	C0G	500#	750					13	33
*SFUMC5000471MX	470pF	†X7R	500#	750				1	16	35
SFUMC5000681MX	680pF	†X7R	500#	750				2	19	39
*SFUMC5000102MX	1.0nF	X7R	500#	750				4	23	41
SFUMC5000152MX	1.5nF	X7R	500#	750				7	26	45
*SFUMC5000222MX	2.2nF	X7R	500#	750				10	30	50
SFUMC5000332MX	3.3nF	X7R	500#	750				13	33	52
*SFUMC5000472MX	4.7nF	X7R	500#	750			1	16	36	55
SFUMC5000682MX	6.8nF	X7R	500#	750			2	19	39	57
*SFUMC5000103MX	10nF	X7R	500#	750			4	22	41	60
*SFUMC5000153MX	15nF	X7R	500#	750			7	25	44	62
*SFUMC5000223MX	22nF	X7R	500#	750			10	29	46	65
SFUMC5000333MX	33nF	X7R	500#	750			13	33	48	68
*SFUMC2000473MX	47nF	X7R	200	500		1	16	35	50	70
SFUMC2000683MX	68nF	X7R	200	500		2	19	39	54	>70
*SFUMC1000104MX	100nF	X7R	100	250		4	22	41	57	>70
*SFUMC0500154MX	150nF	X7R	50	125		7	25	45	60	>70

- Also rated for operation at 115Vac 400Hz. Self-heating will occur - evaluation in situ recommended

* Recommended values
Ordering Information

† Also available in C0G

Type	Case Style	Thread	Electrical configuration	Voltage (dc)	Capacitance in picofarads (pF)	Capacitance Tolerance	Dielectric	Nuts & washers
SF	U	M	C	500	0102	M	X	0
Syfer Filter	6.0mm O.D. Low Profile	M5	C = C Filter	050 = 50V 100 = 100V 200 = 200V 500 = 500V	First digit is 0. Second and third digits are significant figures of capacitance code. The fourth digit is the number of zeros following. Examples: 0101 = 100pF 0332 = 3300pF	M = ±20% Z = -20+80%	C = C0G/NP0 X = X7R	0 = Without

Note: Installation tool available on request

Note: The addition of a 4-digit numerical suffix code can be used to denote changes to the standard part.

Options include for example: change of pin length / custom body dimensions or threads / alternative voltage rating / non-standard intermediate capacitance values / test requirements.

Please refer specific requests to the factory.

