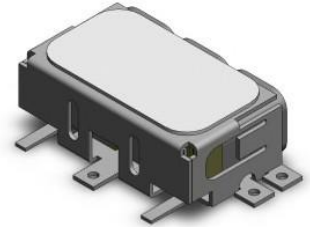


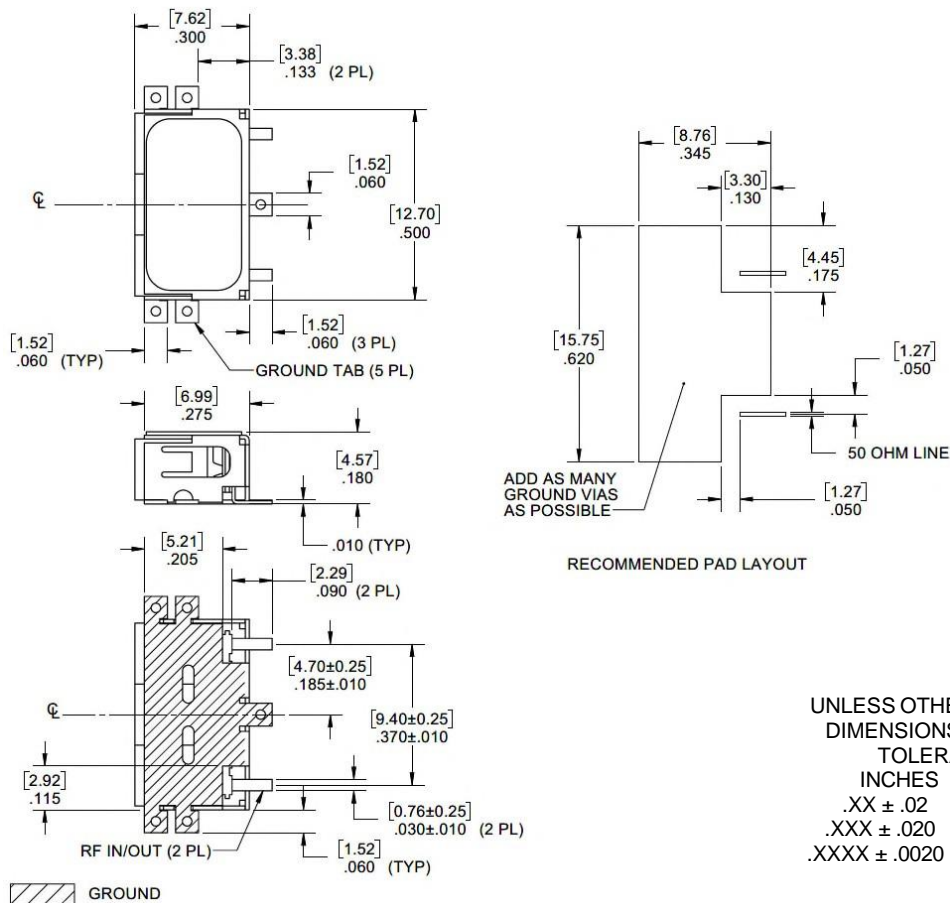
Ceramic Bandpass Filter

Features/Benefits

- Surface Mount
- Made in U.S.A.



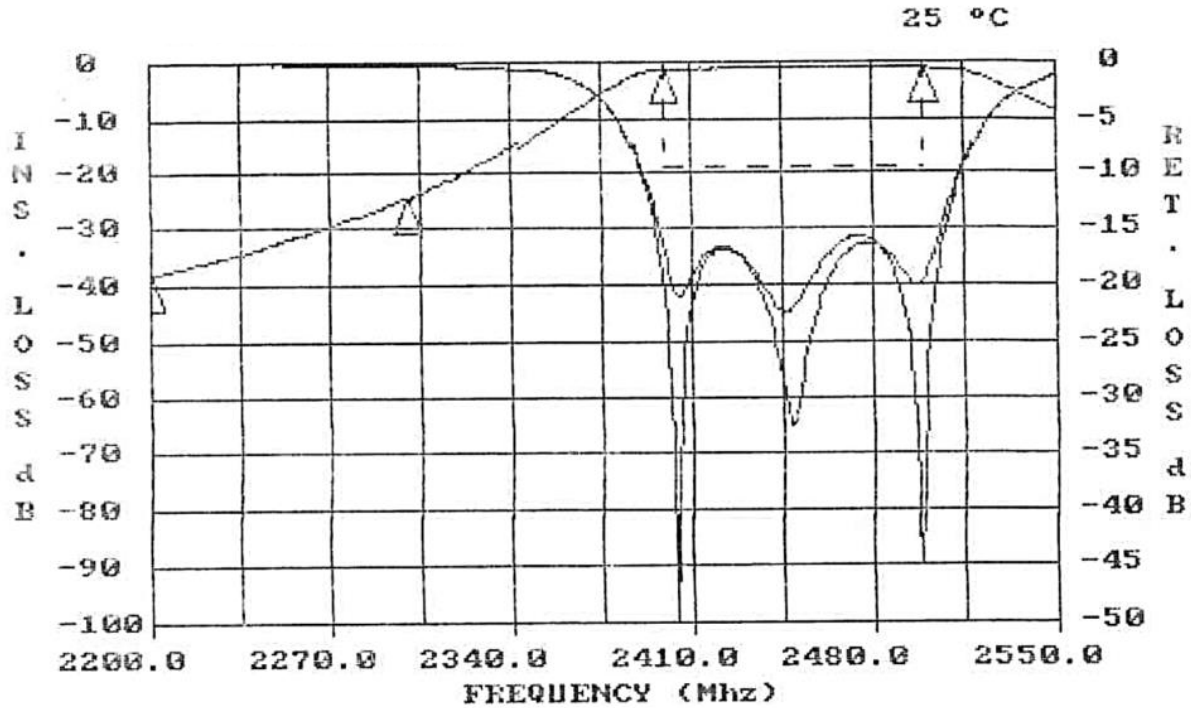
Parameter	Specification
Center Frequency (Fo)	2450 MHz
Passband	-1.0 dBc max from 2400 MHz to 2500 MHz
VSWR	2:1 max from 2400 MHz to 2500 MHz
Insertion Loss	-2.0 dBa max from 2400 MHz to 2500 MHz
Rejection	-20 dBc min from 2200 MHz to 2300 MHz
Temperature, Operating	-20°C to +70°C
Temperature, Storage	-20°C to +70°C
Temperature, Soldering	+215°C MAX (use convective reflow)
Mechanical Dimensions	0.500 x 0.300 x 0.180 inches [12.70 x 7.62 x 4.57 mm] (L X W X H)



UNLESS OTHERWISE SPECIFIED
DIMENSIONS ARE IN INCHES.
TOLERANCES ARE:

INCHES	MILLIMETERS
.XX ± .02	[X.X] ± .5
.XXX ± .020	[X.XX] ± .51
.XXXX ± .0020	[X.XXX] ± .051

This document contains proprietary information and is to be used only for the purposes for which it has been supplied and is not to be duplicated or disclosed in whole or in part without written permission from a duly authorized representative of Knowles.



FREQUENCY (MHZ)	VALUE	SPEC	COMMENTS
2400 - 2500	-1.30 dbA	-2 dbA MAX	
2400 - 2500	-.459 dbC	-1 dbC MAX	
2200 - 2300	-23.8 dbC	-20 dbC MIN	
FREQUENCY (MHZ)		SPEC	COMMENTS
2400 - 2500		2 :1 MAX	(S11) - VSWR
2400 - 2500		2 :1 MAX	(S22) - VSWR

This document contains proprietary information and is to be used only for the purposes for which it has been supplied and is not to be duplicated or disclosed in whole or in part without written permission from a duly authorized representative of Knowles.