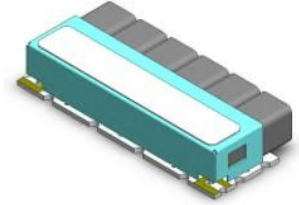


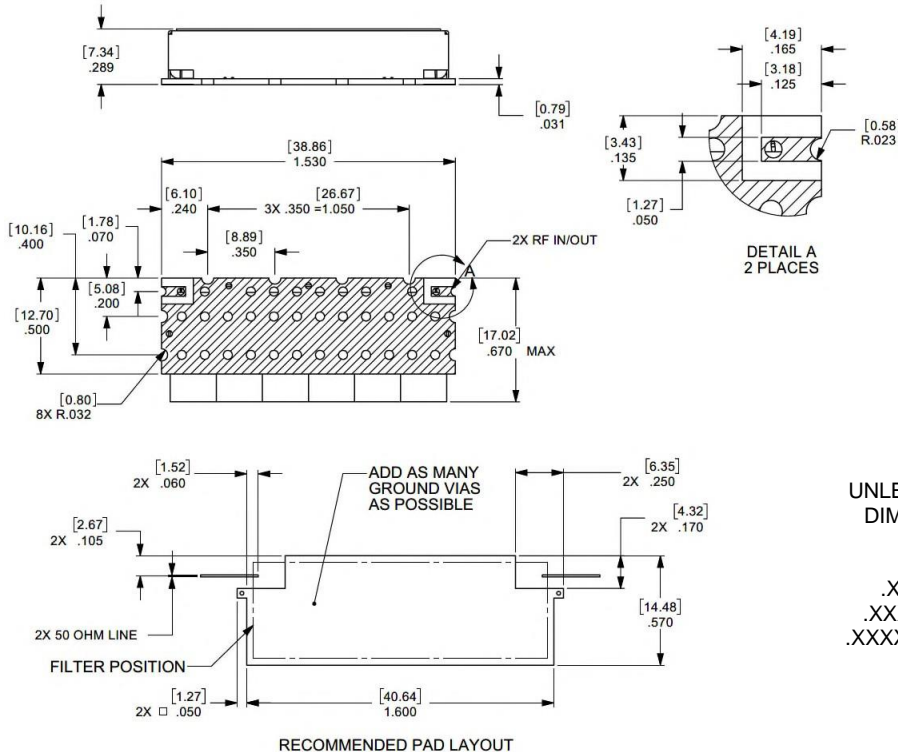
Ceramic Bandpass Filter

Features/Benefits

- Surface Mount
- Made in U.S.A.

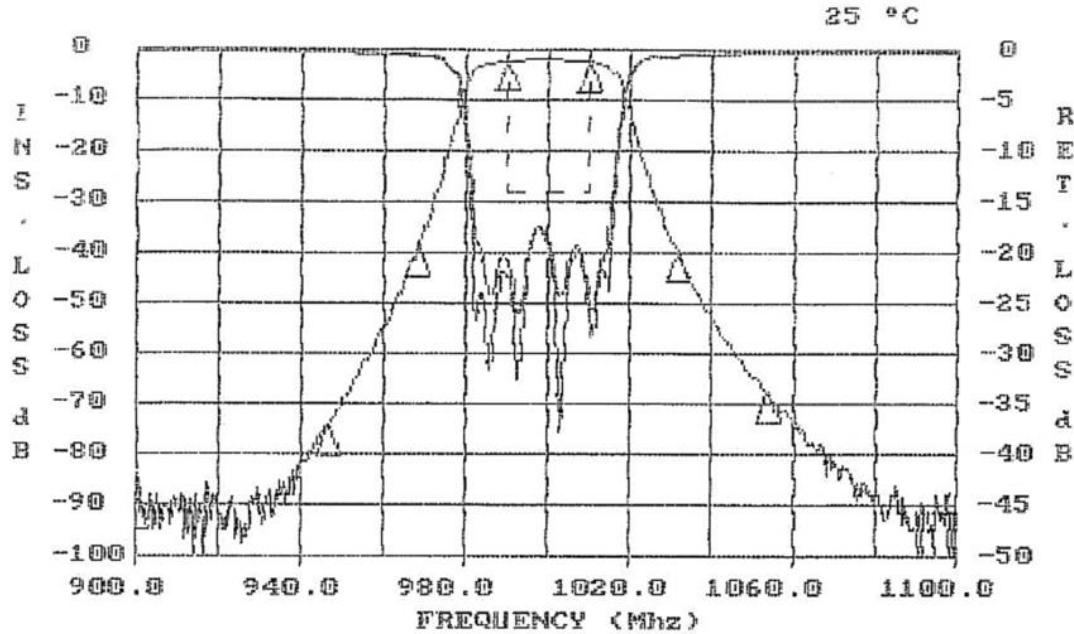


Parameter	Specification
Center Frequency (Fo)	1000 MHz
Passband	-0.5 dBc max from 990 MHz to 1010 MHz
VSWR	1.5:1 max from 990 MHz to 1010 MHz
Insertion Loss	-5.0 dBa max from 990 MHz to 1010 MHz
Rejection	-55 dBc min from 0.3 MHz to 900 MHz -20 dBc min @ 968.33 MHz -20 dBc min @ 1031.67 MHz -55 dBc min from 900 MHz to 946.67 MHz -55 dBc min from 1053.33 MHz to 1450 MHz
Ripple	0.25 max from 990 MHz to 1010 MHz
Temperature, Operating	-55°C to +85°C
Temperature, Storage	-55°C to +125°C
Temperature, Soldering	+215°C MAX (use convective reflow)
Mechanical Dimensions	1.530 x 0.670 x 0.289 inches [38.86 x 17.02 x 7.34 mm] (L X W X H)



UNLESS OTHERWISE SPECIFIED
DIMENSIONS ARE IN INCHES.
TOLERANCES ARE:
INCHES MILLIMETERS
.XX ± .02 [X.X] ± .5
.XXX ± .020 [X.XX] ± .51
.XXXX ± .0020 [X.XXX] ± .051

This document contains proprietary information and is to be used only for the purposes for which it has been supplied and is not to be duplicated or disclosed in whole or in part without written permission from a duly authorized representative of Knowles.

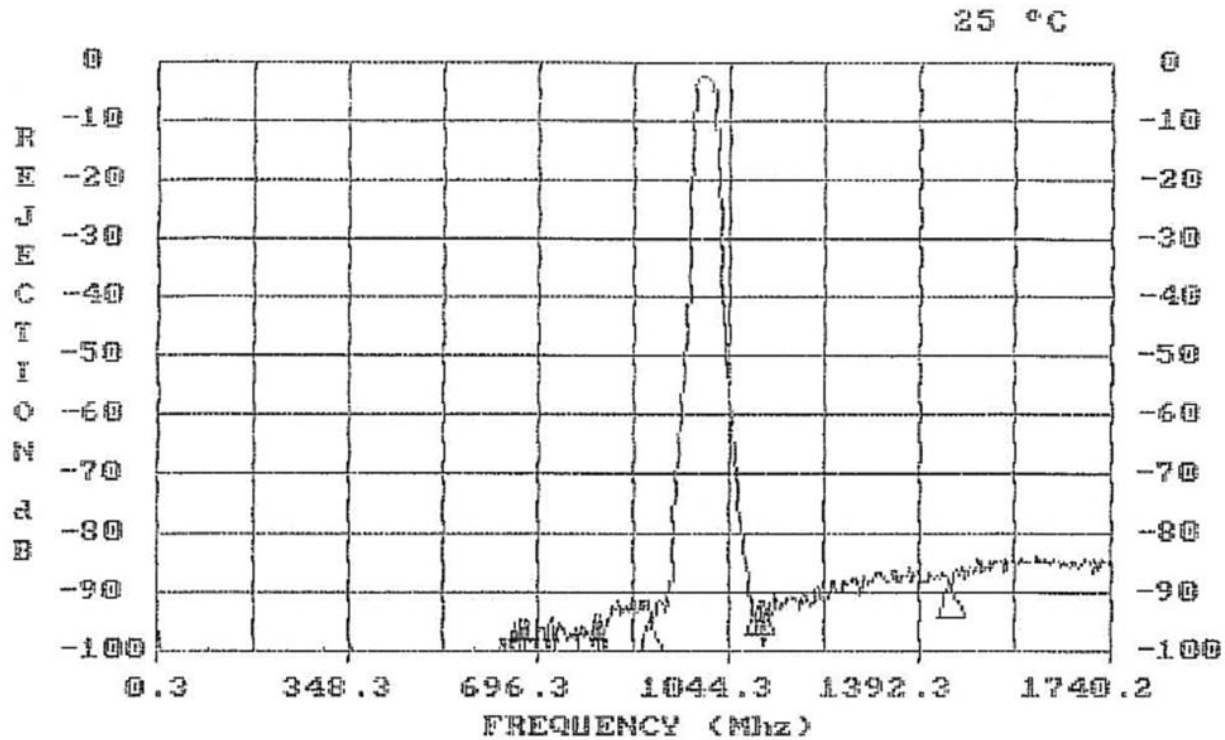


FREQUENCY (MHZ)	VALUE	SPEC	COMMENTS
968.33	-37.2 dbc	-20 dbc MIN	
1031.67	-37.7 dbc	-20 dbc MIN	
990 - 1010	-2.59 dbA	-5 dbA MAX	
990 - 1010	-.346 dbc	-.5 dbc MAX	
900 - 946.67	-72.1 dbc	-55 dbc MIN	
1053.3 - 1100	-65.2 dbc	-55 dbc MIN	

VALUE	SPEC	COMMENTS
35.75 MHZ	20 MHZ MIN	-3dbc Width
998.687MHZ	900 MIN	Center Freq.
998.687MHZ	1100 MAX	Center Freq.

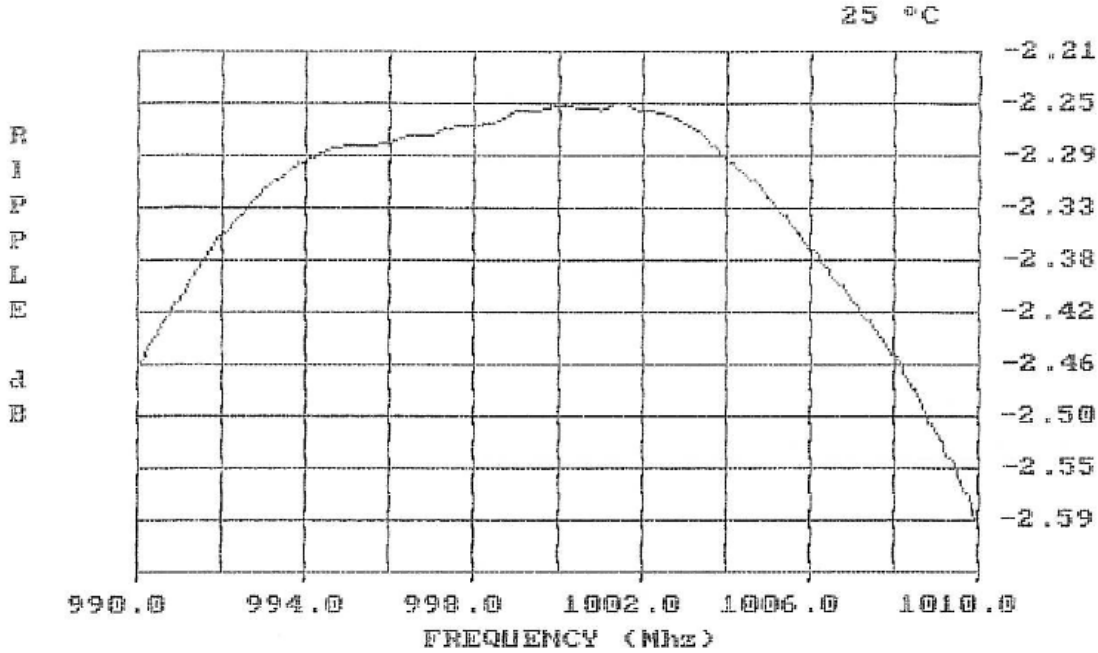
FREQUENCY (MHZ)	VALUE	SPEC	COMMENTS
990 - 1010	-17.3	1.5 :1 MAX	(S11) - VSWR
990 - 1010	-17.5	1.5 :1 MAX	(S22) - VSWR

This document contains proprietary information and is to be used only for the purposes for which it has been supplied and is not to be duplicated or disclosed in whole or in part without written permission from a duly authorized representative of Knowles.



FREQUENCY (MHZ)	VALUE	SPEC	COMMENTS
.3 - 900	-88.8 dbc	-55 dbc MIN	
1100 - 1450	-83.5 dbc	-55 dbc MIN	

This document contains proprietary information and is to be used only for the purposes for which it has been supplied and is not to be duplicated or disclosed in whole or in part without written permission from a duly authorized representative of Knowles.



PASSBAND RIPPLE IS DISPLAYED ABOVE. The ripple spec. is .25dB p-p Max over
990(MHz) - 1010(MHz)

The above graph has a .042 db/Division SCALE

This document contains proprietary information and is to be used only for the purposes for which it has been supplied and is not to be duplicated or disclosed in whole or in part without written permission from a duly authorized representative of Knowles.

Phone: 1-315-655-8710 • Email: KPD-NA-sales@knowles.com • www.knowlescapacitors.com

Product and product information are subject to change without notice.