

19.2 GHz Surface Mount Band pass Filter

B192NB2S

DESCRIPTION

One of DLI's surface mountable catalog band pass filters. This filter utilizes DLI's low loss temperature stable materials which offer small size and minimal performance variation over temperature. The catalog BPF's are offered in a variety of frequency bands, which offers a drop in solution with highly repeatable performance.

FEATURES

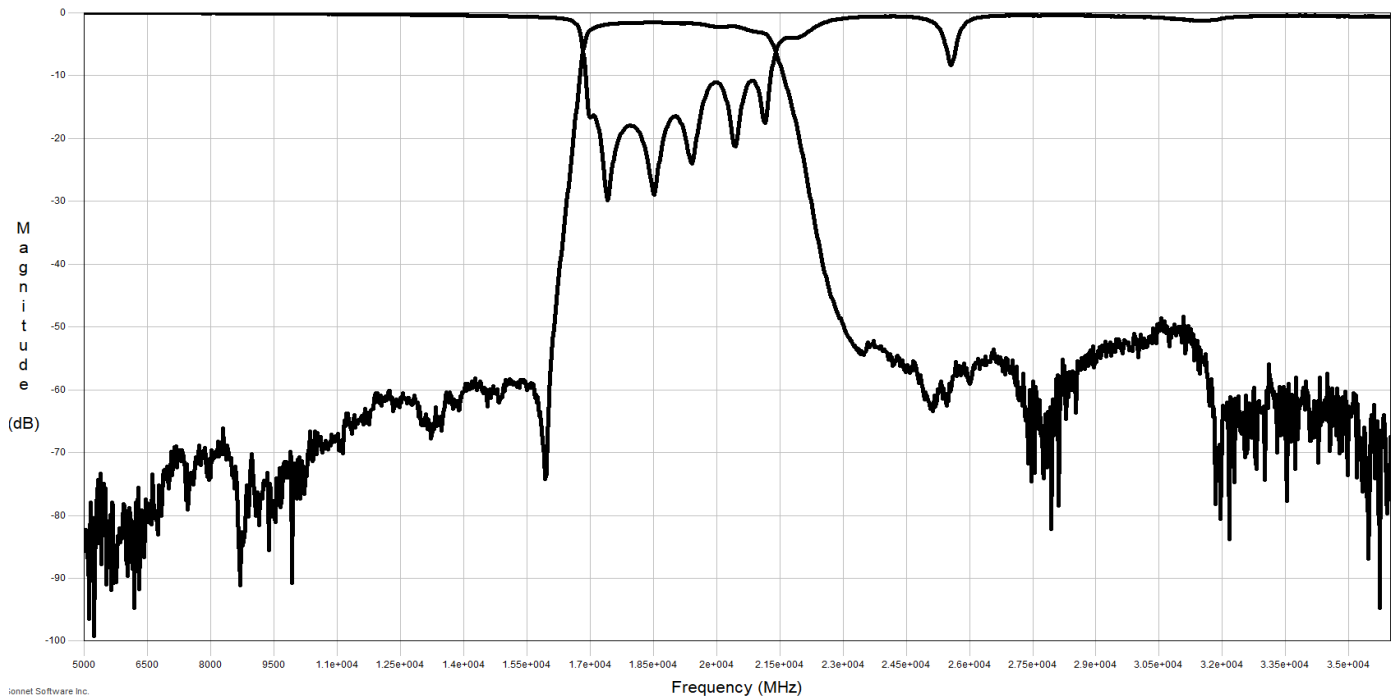
- Small Size
- Fully Shielded Component
- Solder Surface Mount Package
- Moisture Sensitivity Level: MSL1
- Frequency Stable over Temperature
- Operating & Storage Temp: -55°C to +125°C
- Characteristic Impedance: 50Ω

SPECIFICATIONS*

Parameter	Frequency Range (GHz)	Min	Typ.	Max
Insertion Loss (dB)	17.2 - 21.2	-	4.0	4.25
Return Loss (dB)		10	12	15
Low Side Rejection (dB)	DC – 16.0	40	50	45
High Side Rejection (dB)	22.8 - 35.0	45	50	55
Input Power (W)			TBD	
Size (L x W x H)	0.450 x 0.140 x 0.083 in 11.43 x 3.55 x 2.1 mm			

*Electrical specifications based on typical probed performance at room temperature. Insertion loss shall vary ± 0.5 dB over temperature.

Typical Measured Performance

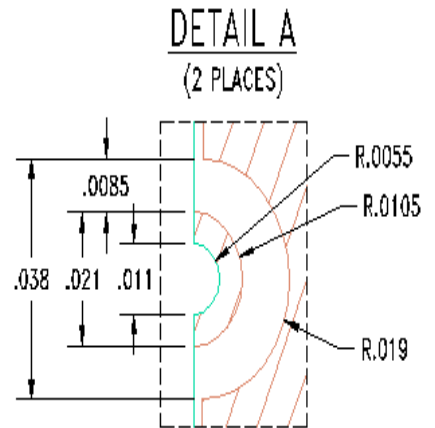
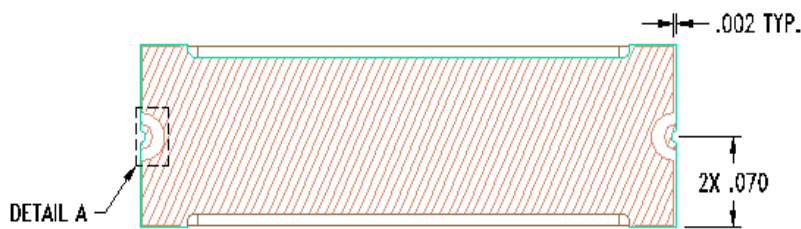
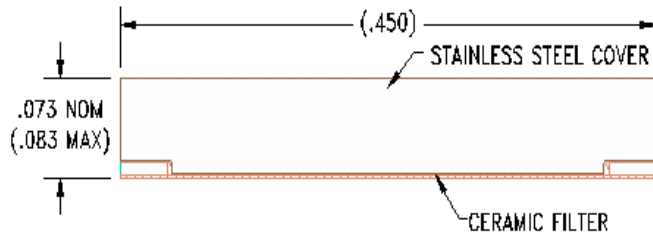
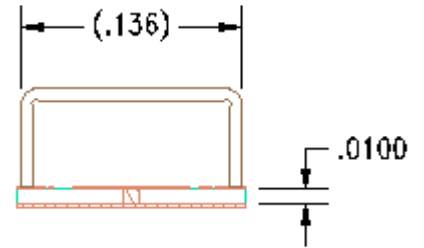
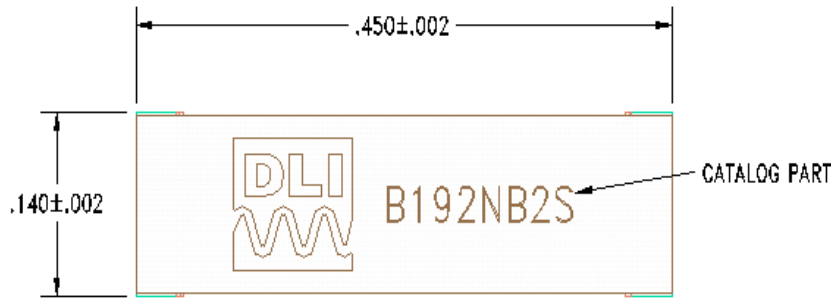


19.2 GHz Surface Mount Band pass Filter

B192NB2S

Physical Dimensions

Units = inches



Recommended PCB Layout

