

20.7 GHz Surface Mount Band pass Filter

B207LA0S

DESCRIPTION

One of DLI's surface mountable catalog band pass filters. This filter utilizes DLI's low loss temperature stable materials which offer small size and minimal performance variation over temperature. The catalog BPF's are offered in a variety of frequency bands, which offers a drop in solution with highly repeatable performance.

FEATURES

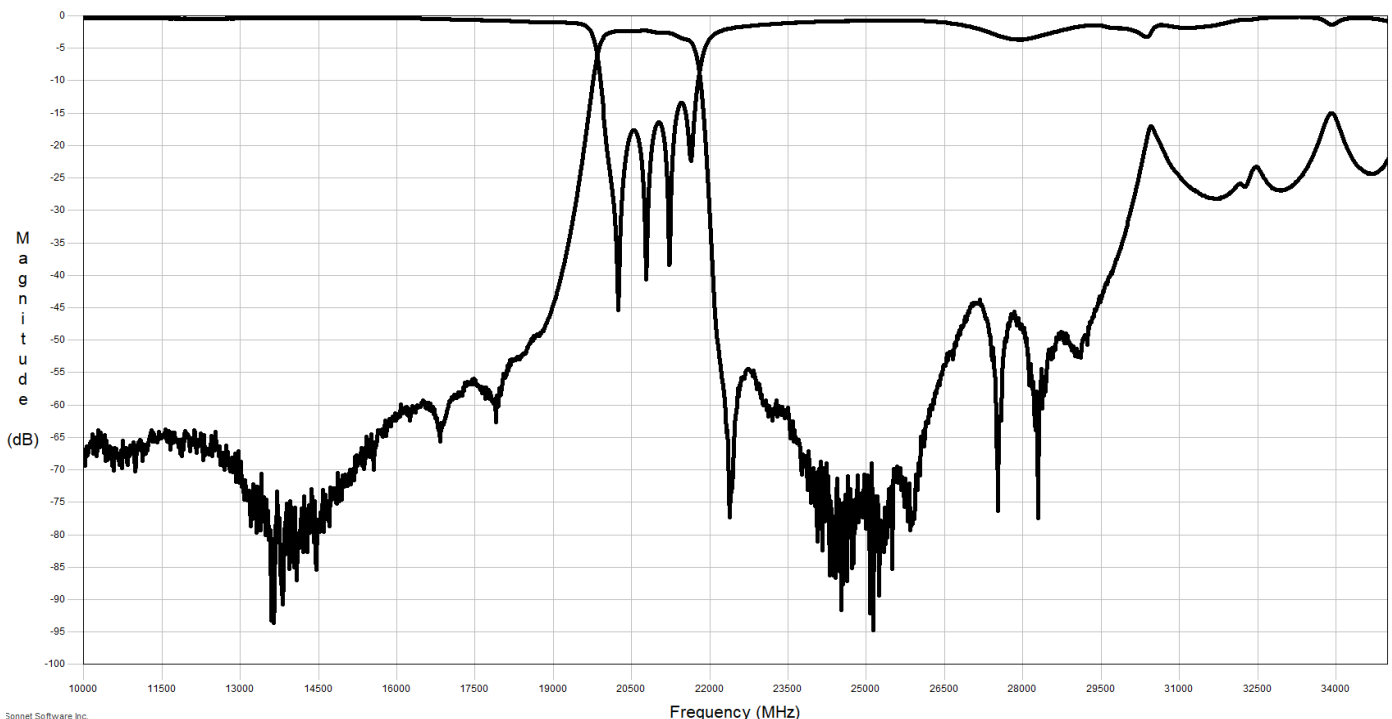
- Small Size
- Fully Shielded Component
- Solder Surface Mount Package
- Moisture Sensitivity Level: MSL1
- Frequency Stable over Temperature
- Operating & Storage Temp: -55°C to +125°C
- Characteristic Impedance: 50Ω

SPECIFICATIONS*

| Parameter | Frequency Range (GHz) | Min | Typ. | Max |
|--------------------------|---|-----|------|-----|
| Insertion Loss (dB) | 20.2 - 21.2 | - | 3.0 | 3.5 |
| Return Loss (dB) | | 10 | 15 | 12 |
| Low Side Rejection (dB) | DC – 18.5 | 40 | 45 | - |
| High Side Rejection (dB) | 22.15 - 29.0 | 40 | 45 | - |
| Input Power (W) | | | TBD | |
| Size (L x W x H) | 0.450 x 0.175 x 0.093 in 11.43 x 4.445 x 2.36 mm | | | |

*Electrical specifications based on typical probed performance at room temperature. Insertion loss shall vary ± 0.5 dB over temperature.

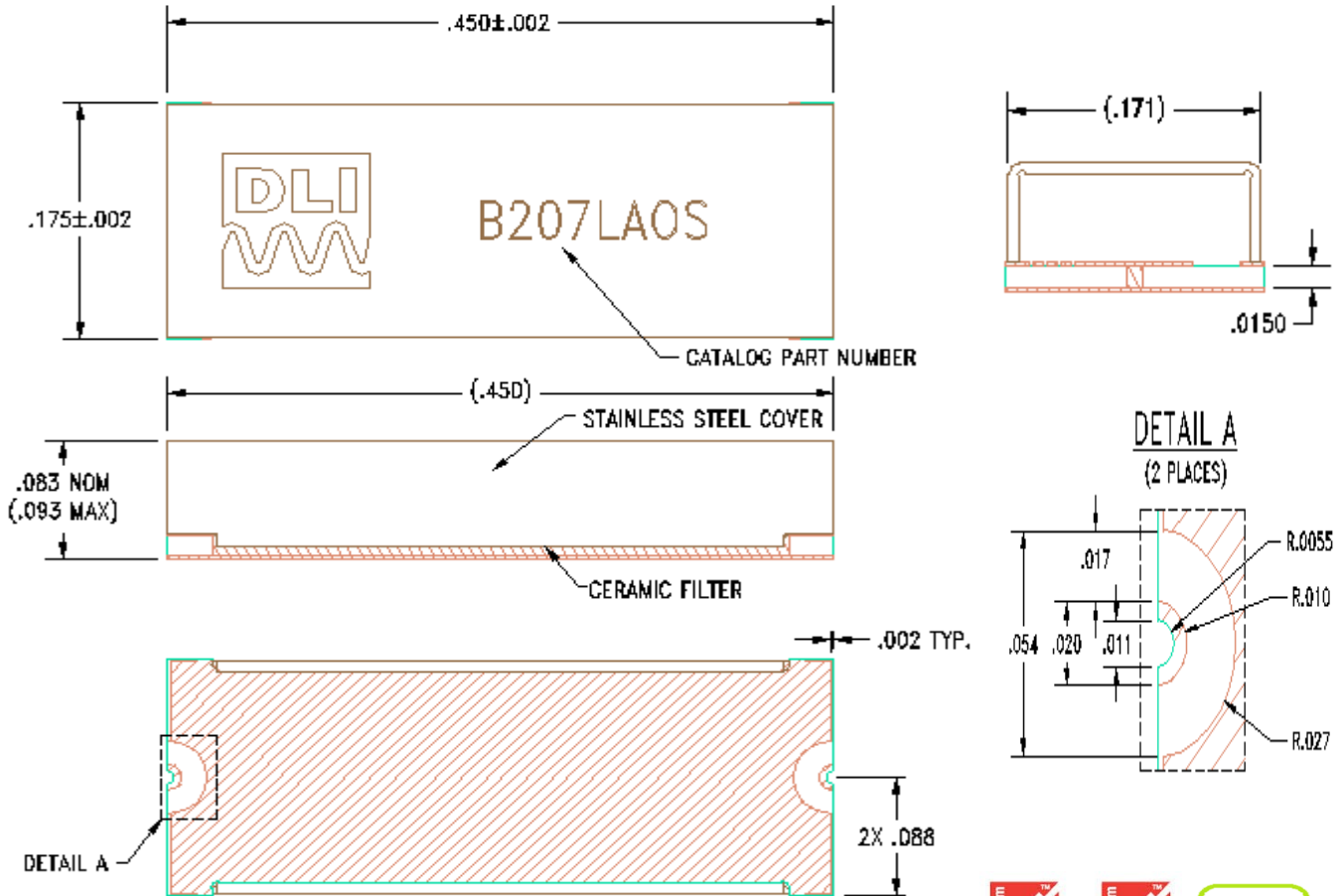
Typical Measured Performance



20.7 GHz Surface Mount Band pass Filter

B207LA0S

Physical Dimensions Units = inches



Recommended PCB Layout (unit = mils)

