

## 35.0GHz Surface Mount Bandpass Filter

**B350NB2S**

[www.knowlesc capacitors.com](http://www.knowlesc capacitors.com)

### DESCRIPTION

One of DLI's surface mount catalog band pass filters This filter utilizes DLI's low loss temperature stable materials which offer small size and minimal performance variation over temperature.

DLI's catalog BPF's are offered in a variety of frequency bands, which offers a drop-in solution with highly repeatable performance.

### FEATURES

- Small Size
- Shielded Component
- Surface Mount Package
- Moisture Sensitivity Level: MSL1
- Frequency Stable over Temperature
- Operating & Storage Temp: -55°C to +125°C
- 50Ω Characteristic Impedance

### Packaging and Ordering information:

To request Tape and Reel packaging, please order part number B350NB2S-T

### SPECIFICATIONS\*

Parameter	Frequency	Min	Typ.	Max
Insertion Loss (dB)	30.0 - 40.0	—	3.0	4.5
Return Loss (dB)		10	12	—
Low Side Rejection (dB)	DC - 26	40	45	—
High Side Rejection (dB)	43.5 - 48	40	45	—
	48.25 - 55.0	10	15	—
Size (L x W x H)	0.275 X 0.080 X 0.070 in 6.985 X 2.0 X 1.77 mm			

\*Electrical specifications based on typical probed performance at room temperature. Insertion loss shall vary up to ±0.5dB over temperature.



2777 Route 20 East, Cazenovia, NY 13035 | Ph.: (315)655-8710

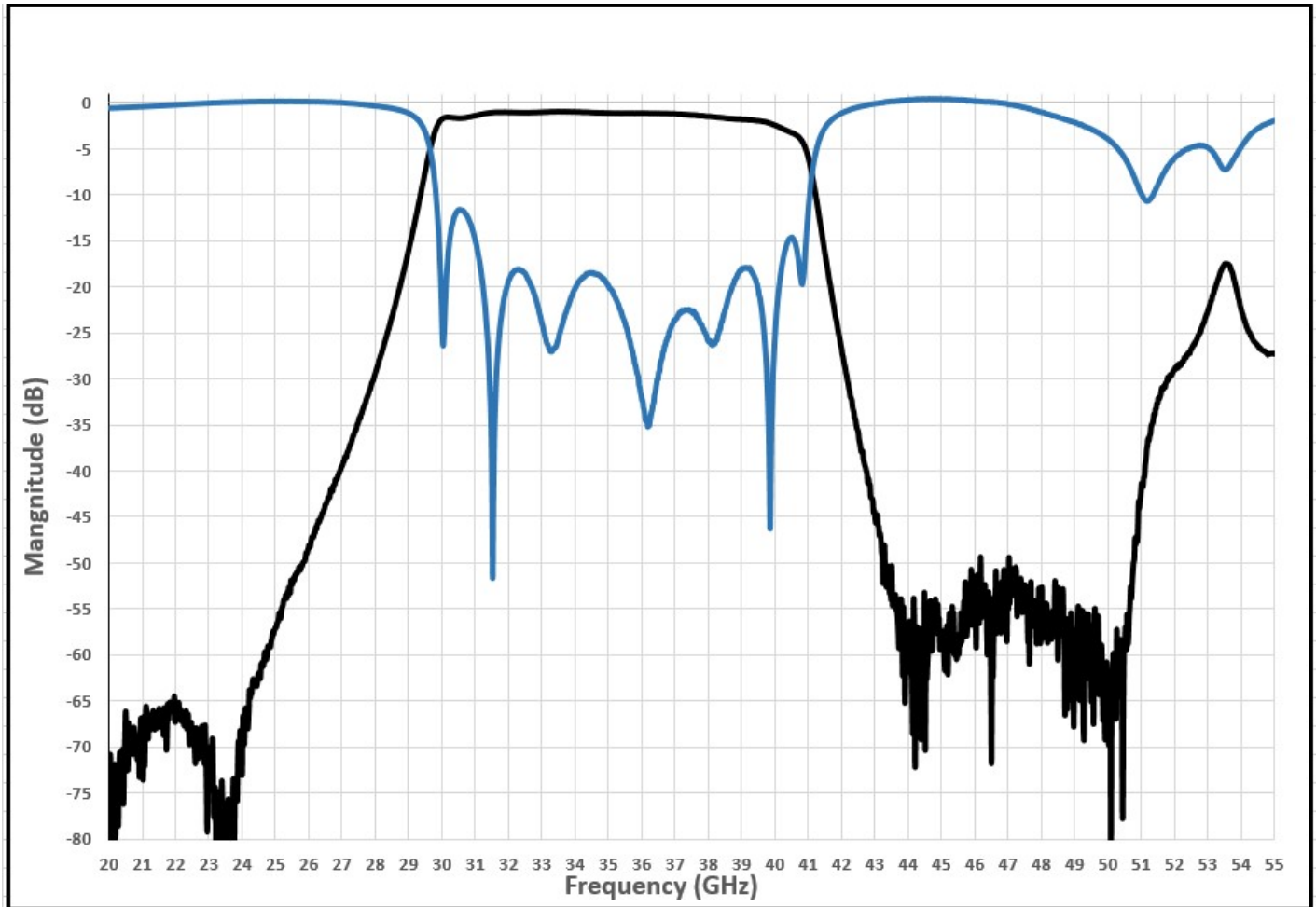
To Order Contact [KCCSales@knowles.com](mailto:KCCSales@knowles.com) | For Technical Inquiries Contact [DLIengineering@knowles.com](mailto:DLIengineering@knowles.com)

## 35.0GHz Surface Mount Bandpass Filter

**B350NB2S**

[www.knowlescapacitors.com](http://www.knowlescapacitors.com)

### Typical Measured Performance



\*Typical de-embedded measured performance mounted on a connectorized test fixture. DEB is 0.010in RO4350B with 50.0Ohm CPW ground traces going into the ports at room temperature.

2777 Route 20 East, Cazenovia, NY 13035 | Ph.: (315)655-8710

To Order Contact [KCCSales@knowles.com](mailto:KCCSales@knowles.com) | For Technical Inquiries Contact [DLIengineering@knowles.com](mailto:DLIengineering@knowles.com)

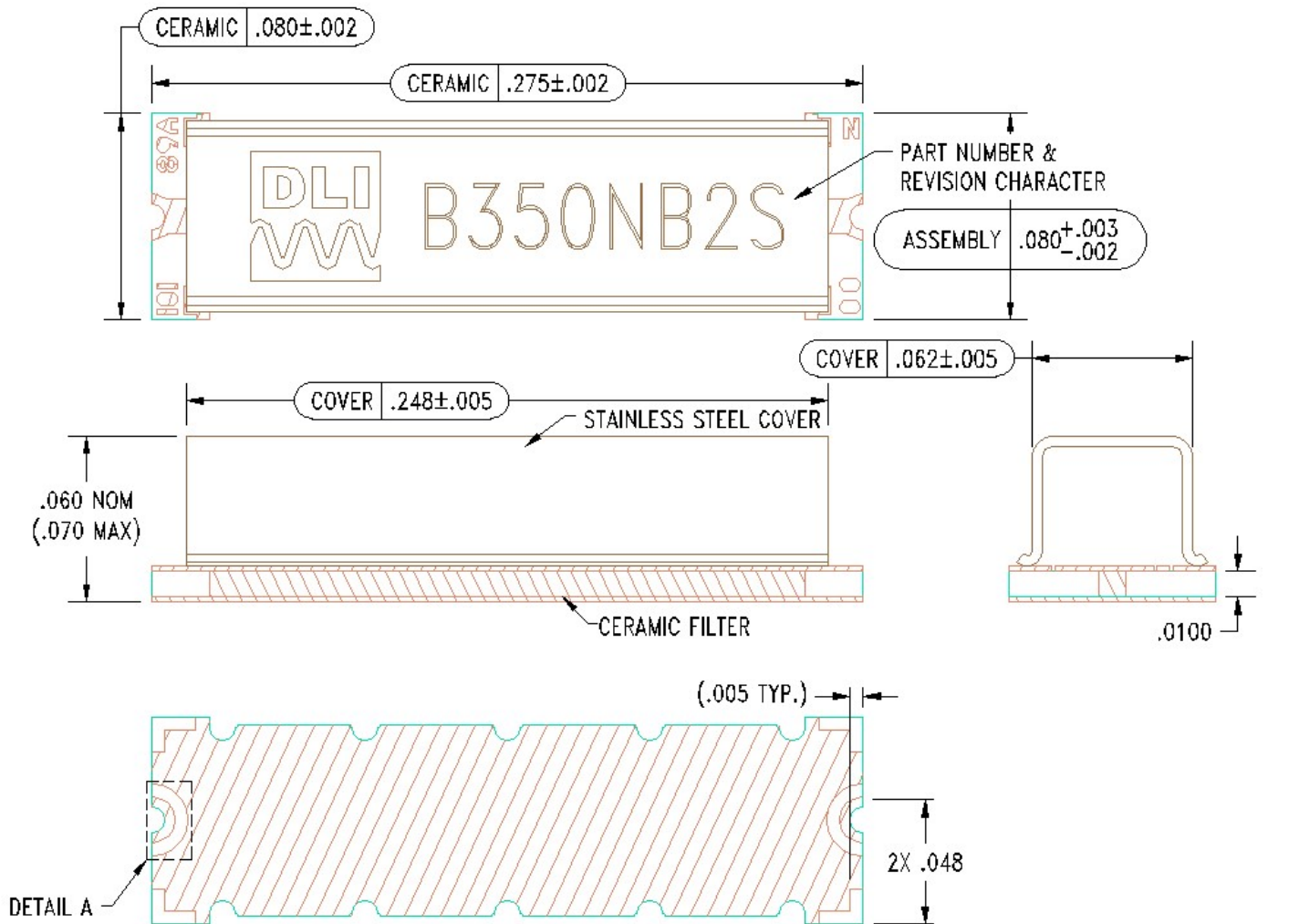
# 35.0GHz Surface Mount Bandpass Filter

**B350NB2S**

[www.knowlesc capacitors.com](http://www.knowlesc capacitors.com)

## Physical Dimensions

Units = inches (in)



### Notes :

#### 1. Mounting Surface Metallization:

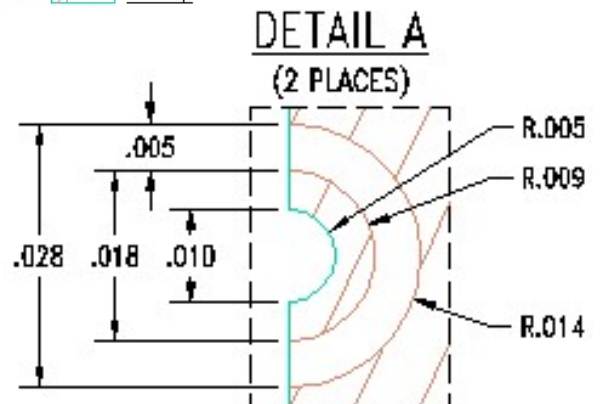
ENIG: 3 - 6  $\mu$ inch Au over 50  $\mu$ inch Ni

#### 2. Maximum Assembly Process Temperature: 250°C

### Tolerances:

For values with 3 decimal places  $\pm 0.001$

For values with 4 decimal places  $\pm 0.0005$



2777 Route 20 East, Cazenovia, NY 13035 | Ph.: (315)655-8710

To Order Contact [KCCSales@knowles.com](mailto:KCCSales@knowles.com) | For Technical Inquiries Contact [DLIengineering@knowles.com](mailto:DLIengineering@knowles.com)

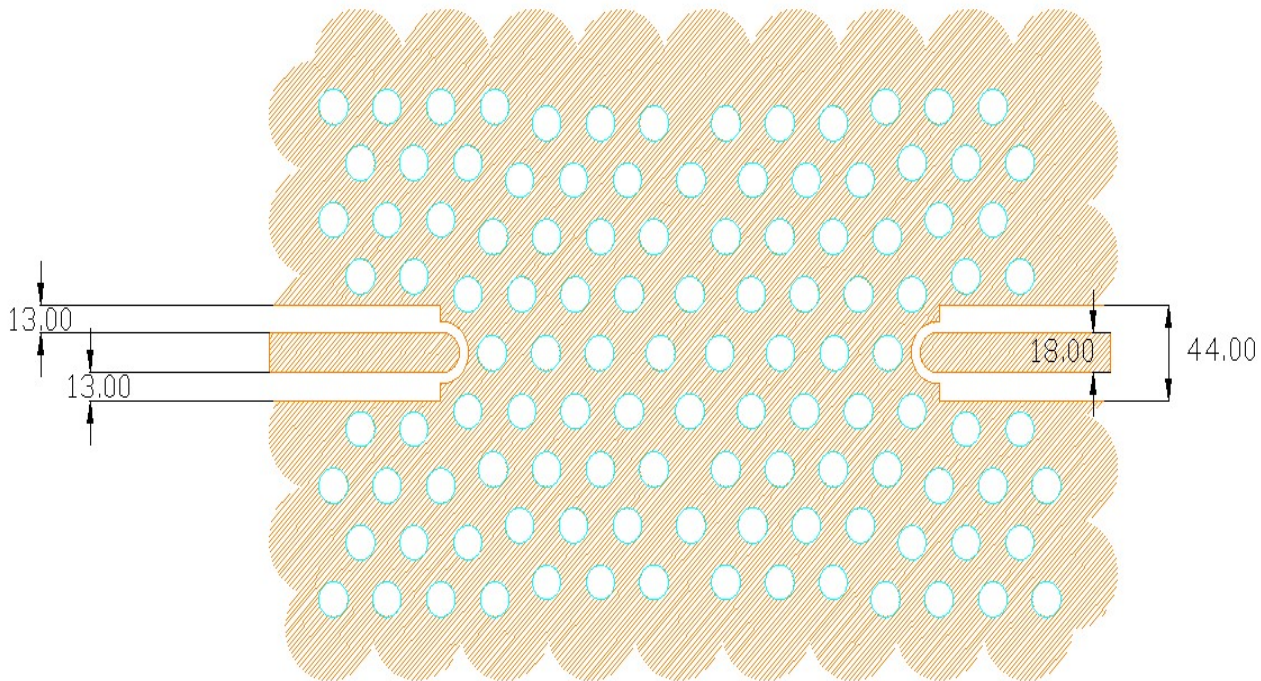
## 35.0GHz Surface Mount Bandpass Filter

**B350NB2S**

[www.knowlescapacitors.com](http://www.knowlescapacitors.com)

### Recommended PCB Layout

Unit : mil



#### Note:

- 50Ω trace dimensions are application specific.
- 50Ω trace dimensions are designed for 10mil thick R04350B Rogers Board .
- Ensure adequate grounding beneath the part.

For more information on how to mount this SMD part, refer to the SMD Guide, available in the Thin Film section of <https://www.knowlescapacitors.com/Support/Resources>

2777 Route 20 East, Cazenovia, NY 13035| Ph.: (315)655-8710

To Order Contact [KCCSales@knowles.com](mailto:KCCSales@knowles.com) | For Technical Inquiries Contact [DLIengineering@knowles.com](mailto:DLIengineering@knowles.com)