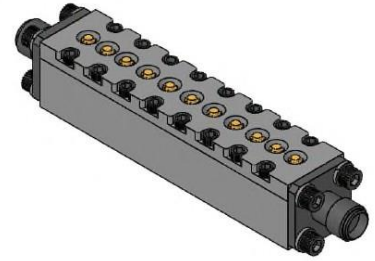


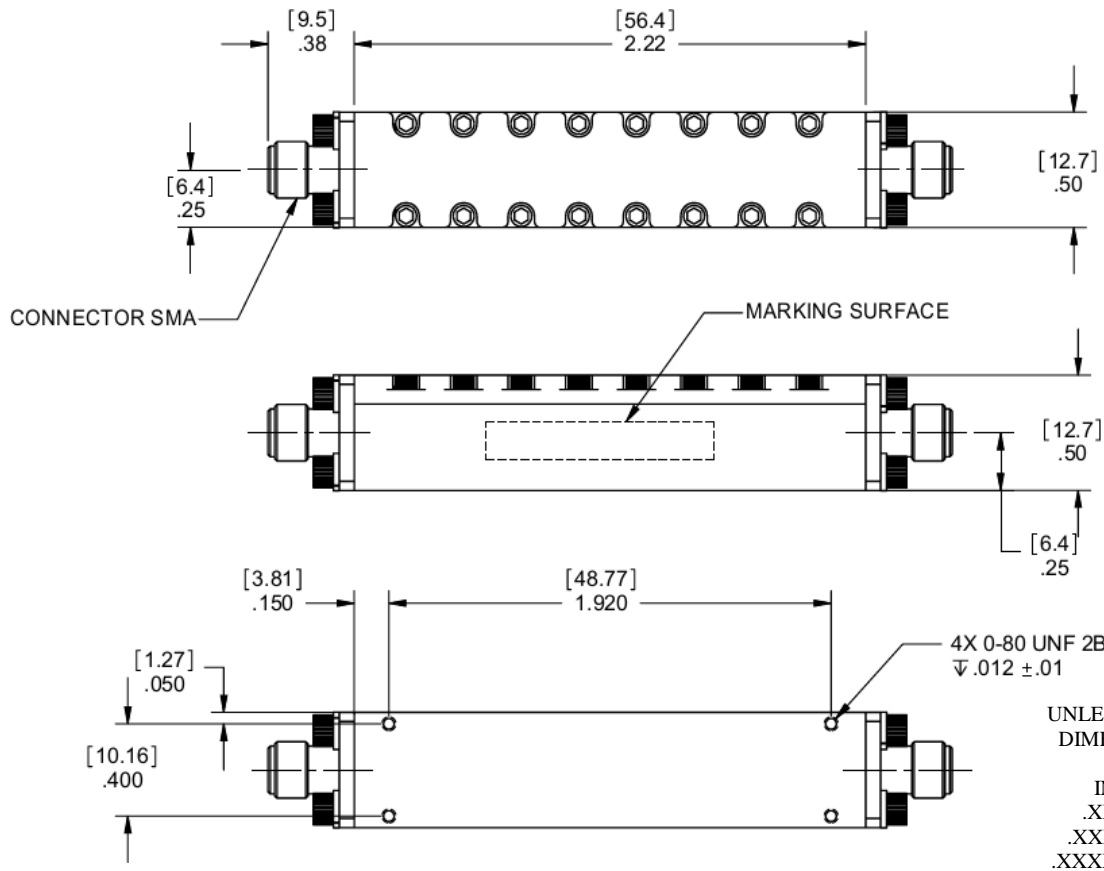
Cavity Bandpass Filter

Features/Benefits

- RoHS Compliant
- SMA-F Connectors
- Made in U.S.A.



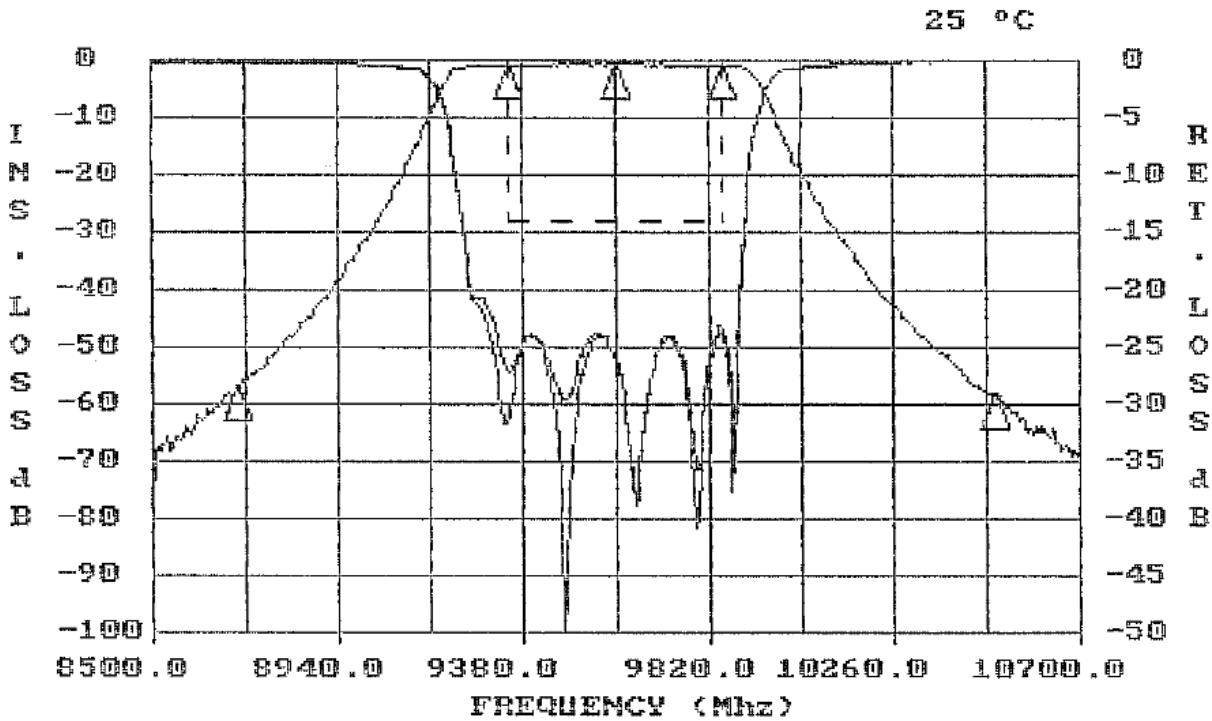
Parameter	Specification
Center Frequency (Fo)	9600 MHz
Passband	3 dB from 9350 MHz to 9850 MHz
VSWR	1.5:1 Max
Insertion Loss	2.0 dBa max @ 9600 MHz
Rejection	50 dBc min @ 8700 MHz 50 dBc min @ 10500 MHz
Temperature, Operating	-20°C to +70°C
Temperature, Storage	-55°C to +125°C
Mechanical Dimensions	2.22 x 0.50 x 0.50 inches [56.4 x 12.7 x 12.7 mm] (L x W x H)



This document contains proprietary information and is to be used only for the purposes for which it has been supplied and is not to be duplicated or disclosed in whole or in part without written permission from a duly authorized representative of Knowles.

Phone: 1-315-655-8710 • Email: KPD-NA-sales@knowles.com • www.knowlescapacitors.com

Product and product information are subject to change without notice.



FREQUENCY (MHZ)	VALUE	SPEC	COMMENTS
9600	-2.606 dbA	-2 dbA MAX	
8700	-56.4 dbC	-50 dbC MIN	
10500	-57.5 dbC	-50 dbC MIN	
9350 - 9850	-3.172 dbC	-3 dbC MAX	

FREQUENCY (MHZ)	VALUE	SPEC	COMMENTS
9350 - 9850	-23.6	1.5 :1 MAX	(S11) - VSWR
9350 - 9850	-23.0	1.5 :1 MAX	(S22) - VSWR

This document contains proprietary information and is to be used only for the purposes for which it has been supplied and is not to be duplicated or disclosed in whole or in part without written permission from a duly authorized representative of Knowles.

Phone: 1-315-655-8710 • Email: KPD-NA-sales@knowles.com • www.knowlescapacitors.com

Product and product information are subject to change without notice.