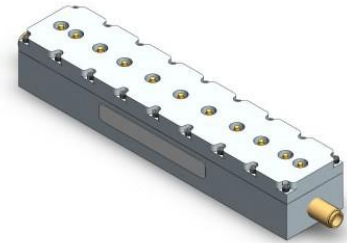


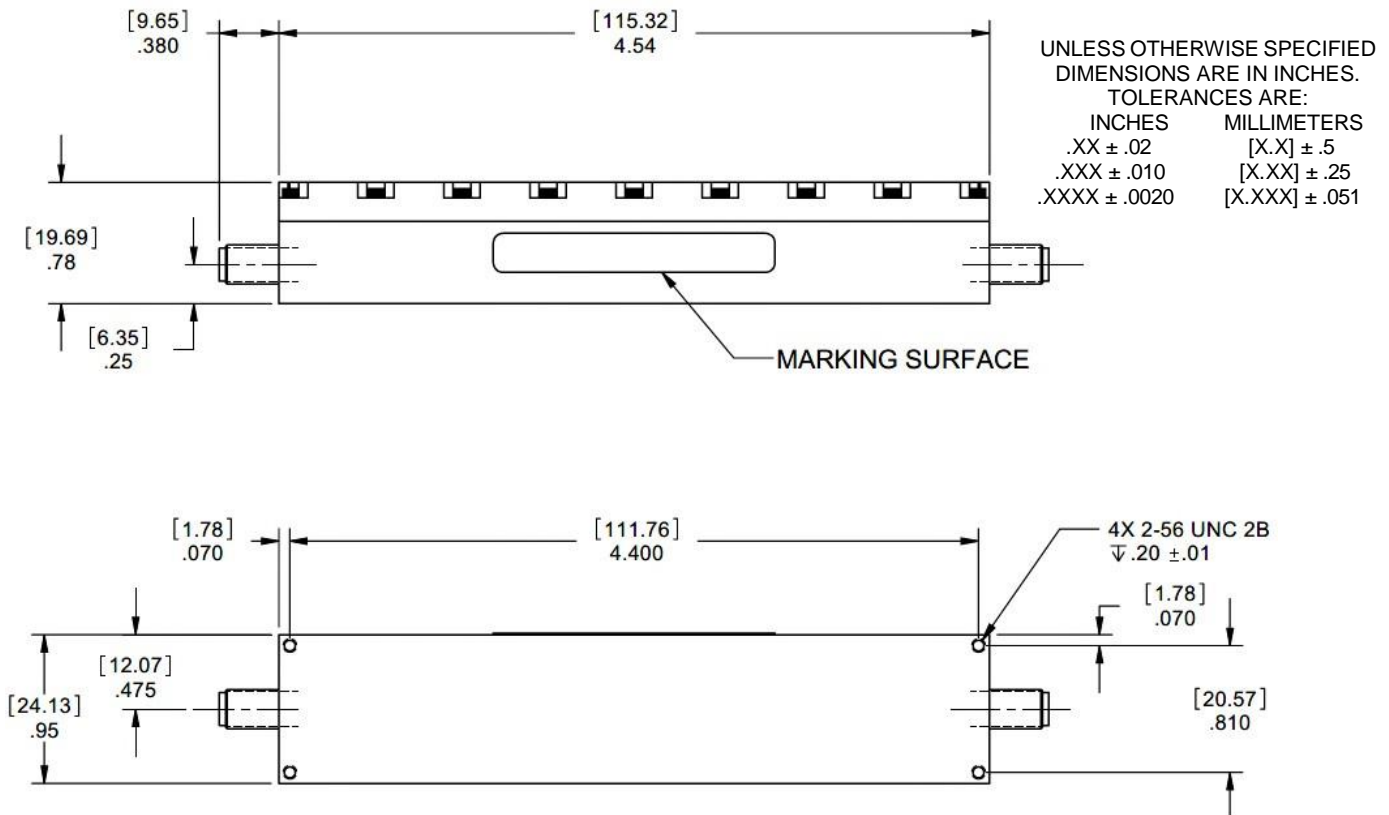
## Cavity Bandpass Filter

### Features/Benefits

- Cavity Filter
- SMA-Female Connectors
- Made in U.S.A.



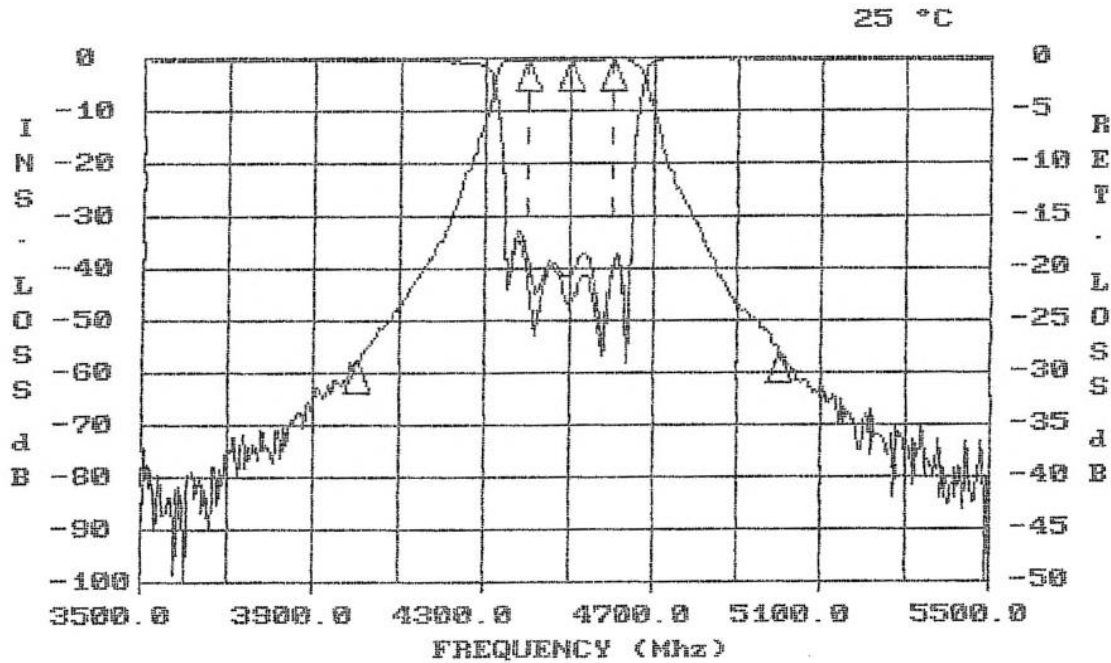
Parameter	Specification
Center Frequency (Fo)	4500 MHz
Passband	-0.3 dBc max from 4400 MHz to 4600 MHz
Return Loss	-15 dB min from 4400 MHz to 4600 MHz
Insertion Loss	-0.5 dBa max @ 4500 MHz
Rejection	-55 dBc min @ 4000 MHz -50 dBc min @ 5000 MHz
Temperature, Operating	-40°C to +85°C
Temperature, Storage	-55°C to +125°C
Mechanical Dimensions	4.54 x 0.95 x 0.78 inches [115.32 x 24.13 x 19.69 mm] (L X W X H)



This document contains proprietary information and is to be used only for the purposes for which it has been supplied and is not to be duplicated or disclosed in whole or in part without written permission from a duly authorized representative of Knowles.

Phone: 1-315-655-8710 • Email: KPD-NA-sales@knowles.com • www.knowlesc capacitors.com

Product and product information are subject to change without notice.



FREQUENCY (MHZ)	VALUE	SPEC	COMMENTS
4500	-238 dbA	-.5 dbA MAX	
4000	-57.4 dbC	-55 dbC MIN	
5000	-55.9 dbC	-50 dbC MIN	
4400 - 4600	-.192 dbC	-.3 dbC MAX	

FREQUENCY (MHZ)	VALUE	SPEC	COMMENTS
4400 - 4420	.488 nsC	.5 nsC VAR	Group Delay
4580 - 4600	.336 nsC	.5 nsC VAR	Group Delay

FREQUENCY (MHZ)	VALUE	SPEC	COMMENTS
4400 - 4600	-19.6	-15 db MIN	(S11) - VSWR
4400 - 4600	-18.6	-15 db MIN	(S22) - VSWR

This document contains proprietary information and is to be used only for the purposes for which it has been supplied and is not to be duplicated or disclosed in whole or in part without written permission from a duly authorized representative of Knowles.