

4.0-8.0GHz Wirebond Quadrature Hybrid Coupler

FHC09101 Datasheet

DESCRIPTION

DLI's wirebond 3dB Quadrature Hybrid Coupler offers good phase and amplitude balance in a small size with low loss and good isolation. The catalog 3 dB Hybrids are offered in a variety of frequency bands, which offers a drop-in solution with highly repeatable performance.

FEATURES

- Small Size
- Wire Bondable Package
- 90 Degree phase delta between output ports
- Moisture Sensitivity Level: MSL1
- Frequency Stable over Temperature
- Operating & Storage Temp: -55°C to +125°C
- Characteristic Impedance: 50Ω

Packaging and Ordering Information

For packaging in tape and reel please use part number: FHC09101-T



SPECIFICATIONS*

Parameter	Frequency Range (GHz)	Min	Typ.	Max
Insertion Loss (dB)	4.0 - 8.0		0.7	1.0
Return Loss (dB)		15	17.5	
Isolation (dB)		17.5	20	
Amplitude Balance (dB)			±0.5	±1
90 Degree Phase Balance			± 3.0	
CW Input Power** (W)		50		
Size (L x W x H)	0.300 x 0.150 x 0.010 in 7.62 x 3.81 x 0.25 mm			

*Electrical specifications based on typical mounted performance at room temperature. Insertion loss shall vary ±0.5dB over temperature.

** Power rating assumes the component will be mounted to a PCB with good thermally conducting ground vias as outlined in the recommended PCB layout that are connected to an adequate heat sink. Max power is based on 125°C base temperature.

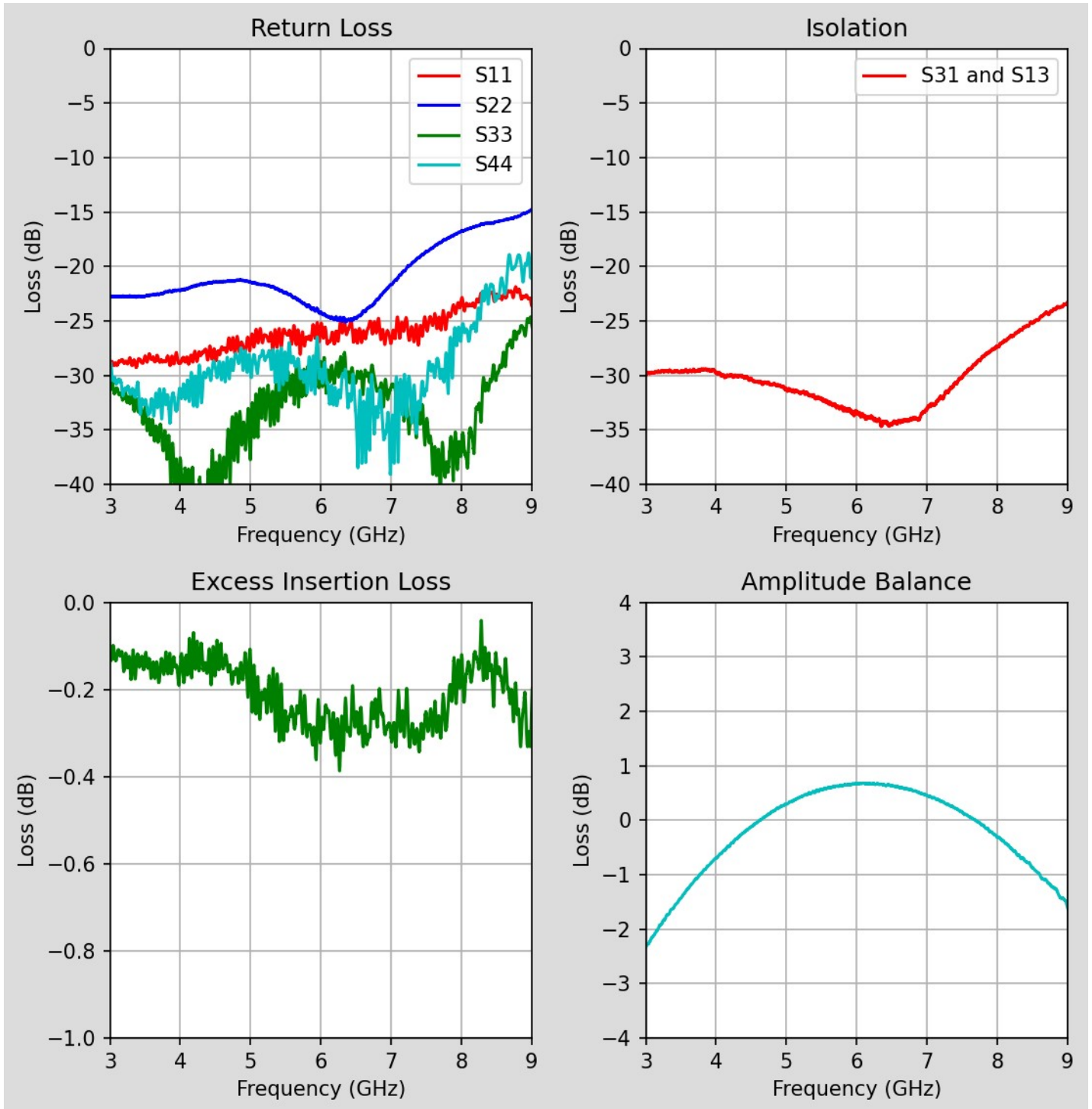
Information in this document is for informational and guideline purposes only. All information regarding the Product described in this datasheet is subject to change from time to time at Knowles Precision Devices' sole discretion. It is the customer's sole responsibility to evaluate the suitability of the Product in the customer's particular application. Knowles Precision Devices assumes no responsibility or liability for the use of the information contained within.

2777 Route 20 East, Cazenovia, NY 13035 | Ph.: (315)655-8710

To Order Contact KCCSales@knowles.com | For Technical Inquiries Contact DLIengineering@knowles.com

4.0-8.0GHz Wirebond Quadrature Hybrid Coupler
FHC09101 Datasheet Typical Measured Performance

www.knowlesc capacitors.com



*Typical de-embedded measured performance mounted on a connectorized test fixture. Evaluation Board is 0.010in RO4350B with 50.0 Ohm CPW ground traces going into the ports at room temperature.

2777 Route 20 East, Cazenovia, NY 13035 | Ph.: (315)655-8710

To Order Contact KCCSales@knowles.com | For Technical Inquiries Contact DLengineering@knowles.com

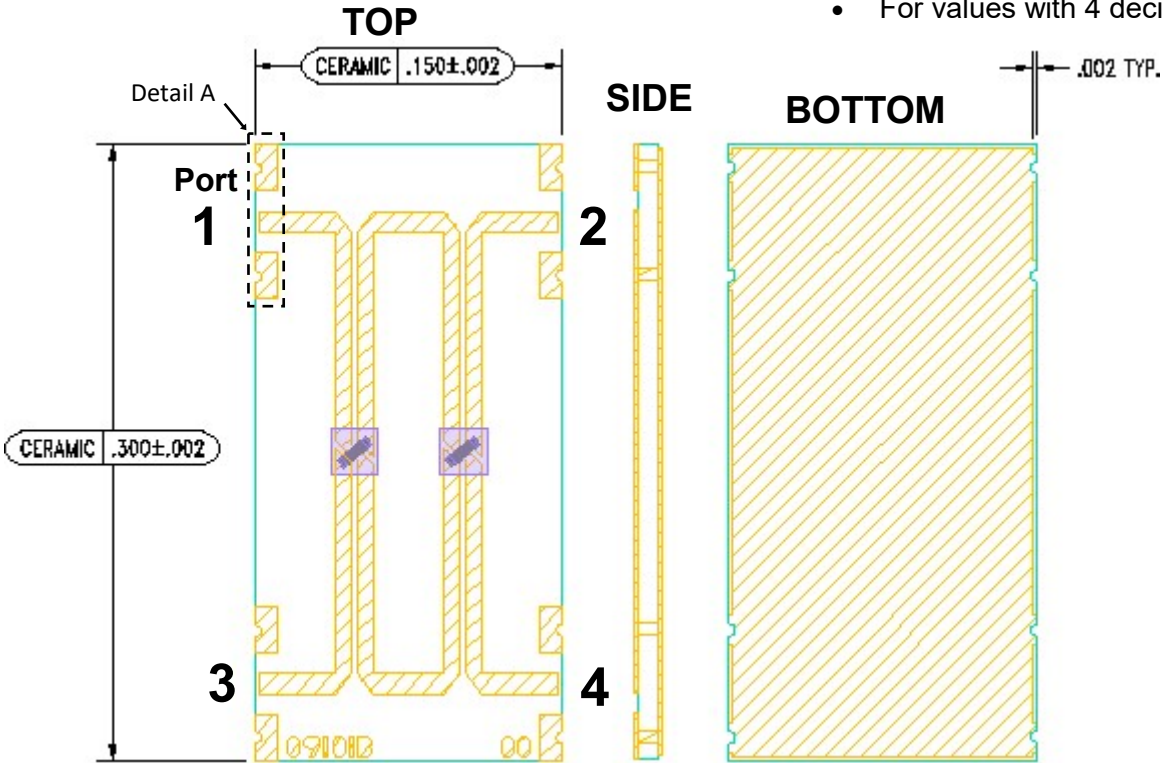
4.0-8.0GHz Wirebond Quadrature Hybrid Coupler
FHC09101 Datasheet

Physical Dimensions

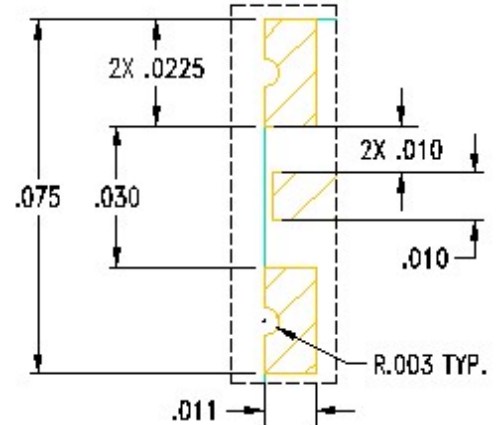
Units = inches

Tolerances:

- For values with 3 decimal places ± 0.001
- For values with 4 decimal places ± 0.0005



DETAIL A
(4 PLACES)



FHC09096 Coupler Port Configuration				
	Port 1	Port 2	Port 3	Port 4
Configuration 1	Input	Output	Isolated	Coupled
Configuration 2	Output	Input	Coupled	Isolated
Configuration 3	Isolated	Coupled	Input	Output
Configuration 4	Coupled	Isolated	Output	Input

Termination Finish: Au

Maximum Assembly Process Temperature: 250°C

2777 Route 20 East, Cazenovia, NY 13035 | Ph.: (315)655-8710

To Order Contact KCCSales@knowles.com | For Technical Inquiries Contact DLIengineering@knowles.com