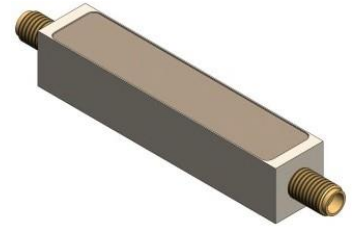


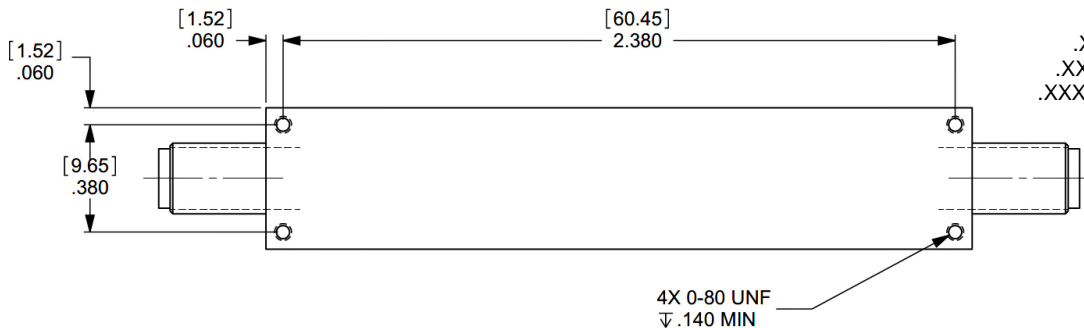
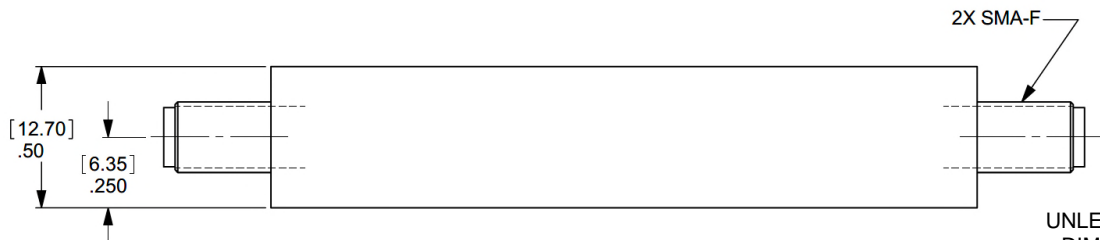
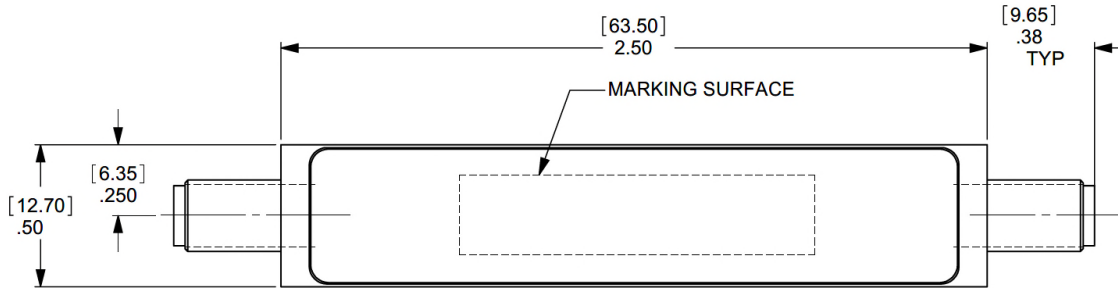
Lumped Highpass Filter

Features/Benefits

- SMA-F Connectors
- Made in U.S.A.



Parameter	Specification
Cutoff Frequency (Fc)	500 MHz
Passband	-1 dBa max from 824 MHz to 2690MHz
Return Loss	-14 dB min from 824 MHz to 2690 MHz
Rejection	-60 dBa min from 824 MHz to 2690 MHz
Temperature, Operating	-40°C to +80°C
Temperature, Storage	-55°C to +125°C
Mechanical Dimensions	2.500 x 0.500 x 0.500 inches [63.50 x 12.70 x 12.70 mm] (L X W X H)



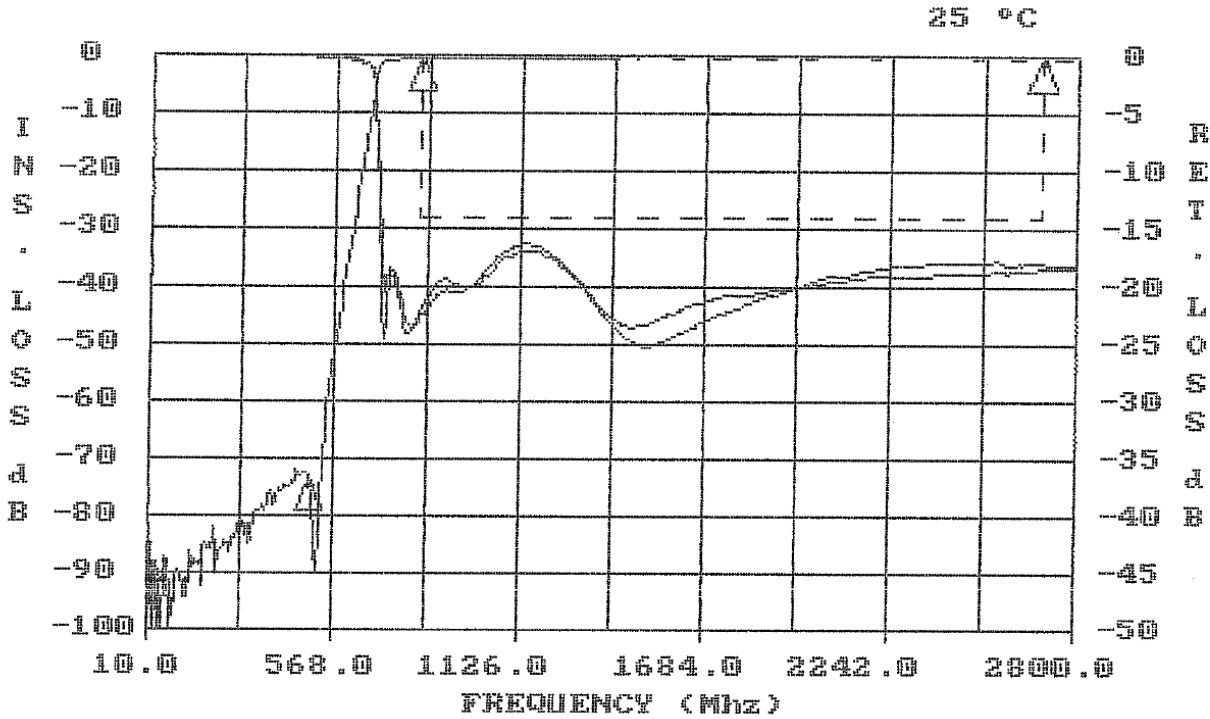
UNLESS OTHERWISE SPECIFIED
DIMENSIONS ARE IN INCHES.
TOLERANCES ARE:

INCHES	MILLIMETERS
.XX ± .02	[X.X] ± .5
.XXX ± .010	[X.XX] ± .25
.XXXX ± .0020	[X.XXX] ± .051

This document contains proprietary information and is to be used only for the purposes for which it has been supplied and is not to be duplicated or disclosed in whole or in part without written permission from a duly authorized representative of Knowles.

Phone: 1-315-655-8710 • Email: KPD-NA-sales@knowles.com • www.knowlescapacitors.com

Product and product information are subject to change without notice.



FREQUENCY (MHZ)	VALUE	SPEC	COMMENTS
824 - 2690	-1.447 dbA	-1 dbA MAX	
30 - 494	-71.9 dbA	-60 dbA MIN	

FREQUENCY (MHZ)	VALUE	SPEC	COMMENTS
824 - 2690	-16.2	-14 db MIN	(S11) - VSWR
824 - 2690	-16.7	-14 db MIN	(S22) - VSWR

This document contains proprietary information and is to be used only for the purposes for which it has been supplied and is not to be duplicated or disclosed in whole or in part without written permission from a duly authorized representative of Knowles.

Phone: 1-315-655-8710 • Email: KPD-NA-sales@knowles.com • www.knowlescapacitors.com

Product and product information are subject to change without notice.