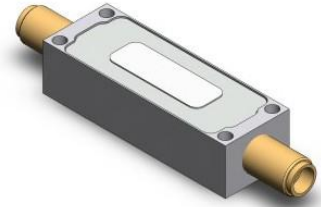


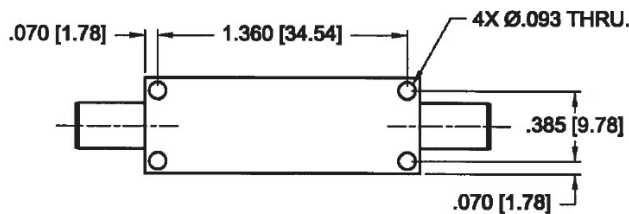
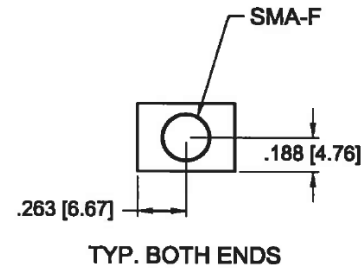
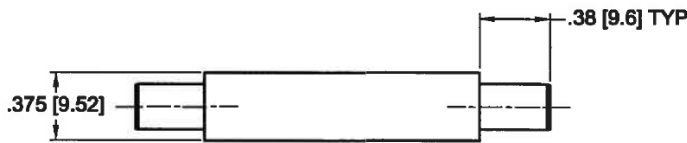
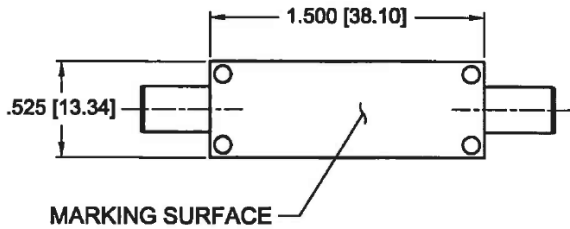
Highpass Filter

Features/Benefits

- SMA-Female Connectors
- Made in U.S.A.



Parameter	Specification
Cutoff Frequency (Fc)	1600 MHz
Return Loss	-10 dB min from 1600 MHz to 10000 MHz
Insertion Loss	-3.0 dBa max from 1600 MHz to 10000 MHz
Rejection	-60 dBc min from 50 MHz to 1440 MHz
Temperature, Operating	-20°C to +70°C
Temperature, Storage	-55°C to +125°C
Mechanical Dimensions	1.500 x 0.525 x 0.375 inches [38.10 x 13.34 x 9.52 mm] (L X W X H)



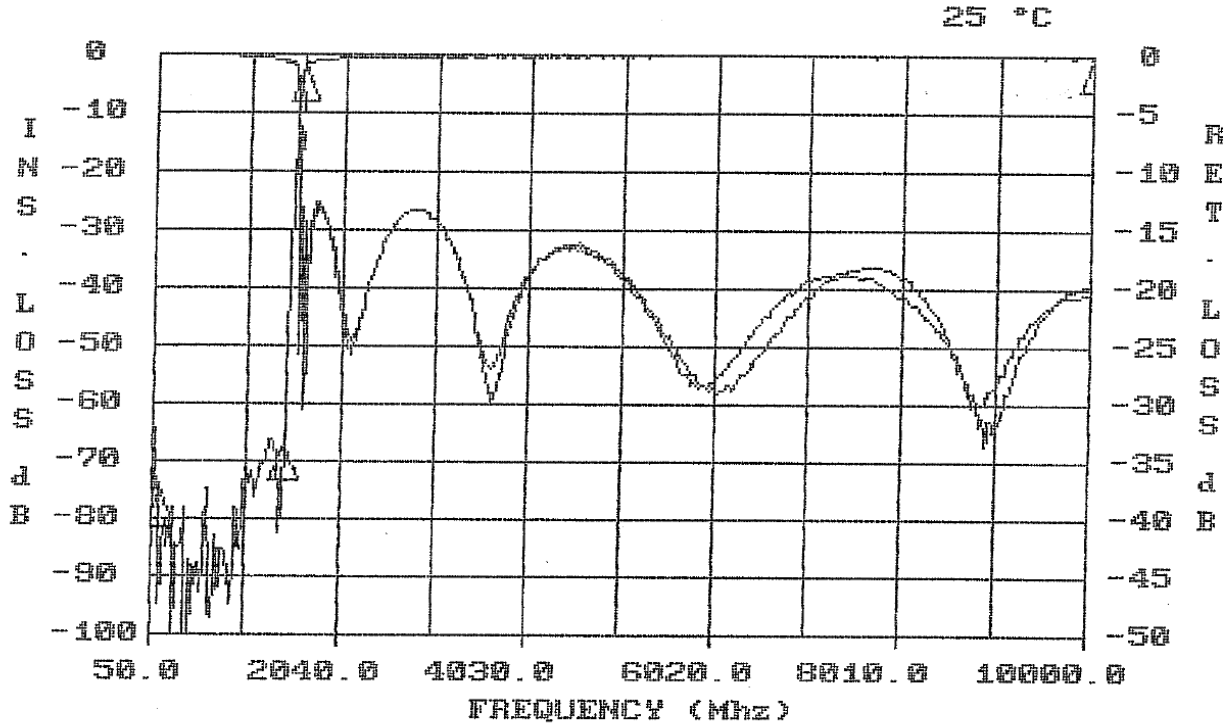
UNLESS OTHERWISE SPECIFIED
DIMENSIONS ARE IN INCHES.
TOLERANCES ARE:

INCHES	MILLIMETERS
.XX ± .02	[X.X] ± .5
.XXX ± .010	[X.XX] ± .25
.XXXX ± .0020	[X.XXX] ± .051

This document contains proprietary information and is to be used only for the purposes for which it has been supplied and is not to be duplicated or disclosed in whole or in part without written permission from a duly authorized representative of Knowles.

Phone: 1-315-655-8710 • Email: KPD-NA-sales@knowles.com • www.knowlesc capacitors.com

Product and product information are subject to change without notice.



FREQUENCY (MHZ)	VALUE	SPEC	COMMENTS
1600 - 10000	-1.75 dbA	-3 dbA MAX	
130 - 1440	-66.2 dbc	-60 dbc MIN	
FREQUENCY (MHZ)	VALUE	SPEC	COMMENTS
1600 - 10000	-13.1	-10 db MIN	(S11) - VSWR
1600 - 10000	-12.7	-10 db MIN	(S22) - VSWR

This document contains proprietary information and is to be used only for the purposes for which it has been supplied and is not to be duplicated or disclosed in whole or in part without written permission from a duly authorized representative of Knowles.