

3 - 24.5GHz Highpass WB Filter H026XHXW

www.knowlescapacitors.com

DESCRIPTION

DLI's wide band wirebond (WB) filter utilizes Knowles' unique multilayer filter technology to enable compact wideband performance.

FEATURES

- Small Size
- Wirebond Configuration
- Excellent Repeatability
- Moisture Sensitivity Level: MSL1
- Operating & Storage Temp: -55°C to +125°C
- Characteristic Impedance: 50Ω

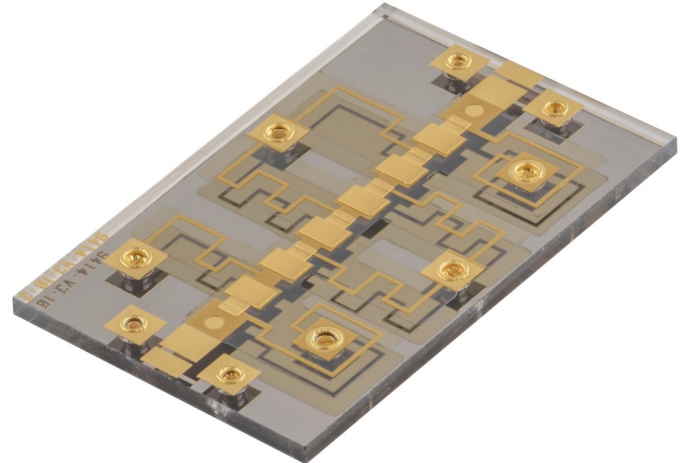
Packaging and Ordering information:

To request tape and reel packaging, please order part number **H026XHXW-T**



*Electrical specifications based on typical mounted performance at room temperature. Insertion loss shall vary ± 0.5 dB over temperature.

** Power rating assumes the component will be mounted to a PCB with good thermally conducting ground via's as outlined in the recommended PCB layout that are connected to an adequate heat sink. Max power is based on 125°C base temperature.



SPECIFICATIONS*

| Parameter | Frequency Range (GHz) | Min* | Typ. | Max* |
|--|--|------|------|------|
| Insertion Loss (dB) | 3.0 - 24.5 | | 0.8 | 2.5 |
| Return Loss (dB) | | 7 | 12 | |
| Low Side Rejection (dB) | DC - 1.40 | 60 | 65 | |
| | 1.4 - 1.70 | 40 | 45 | |
| CW Input Power** (W) | 3.0 - 24.5 | | | 5 |
| $\theta_{JC} \left(\frac{^{\circ}\text{C}}{\text{W}} \right)$ | 15 | | | |
| Size (L x W x H) | 0.250 x 0.160 x 0.010 inch 6.35 x 4.0 x 0.25 mm | | | |

Information in this document is for informational and guideline purposes only. All information regarding the Product described in this datasheet is subject to change from time to time at Knowles Precision Devices' sole discretion. It is the customer's sole responsibility to evaluate the suitability of the Product in the customer's particular application. Knowles Precision Devices assumes no responsibility or liability for the use of the information contained within.

2777 Route 20 East, Cazenovia, NY 13035 | Ph.: (315)655-8710

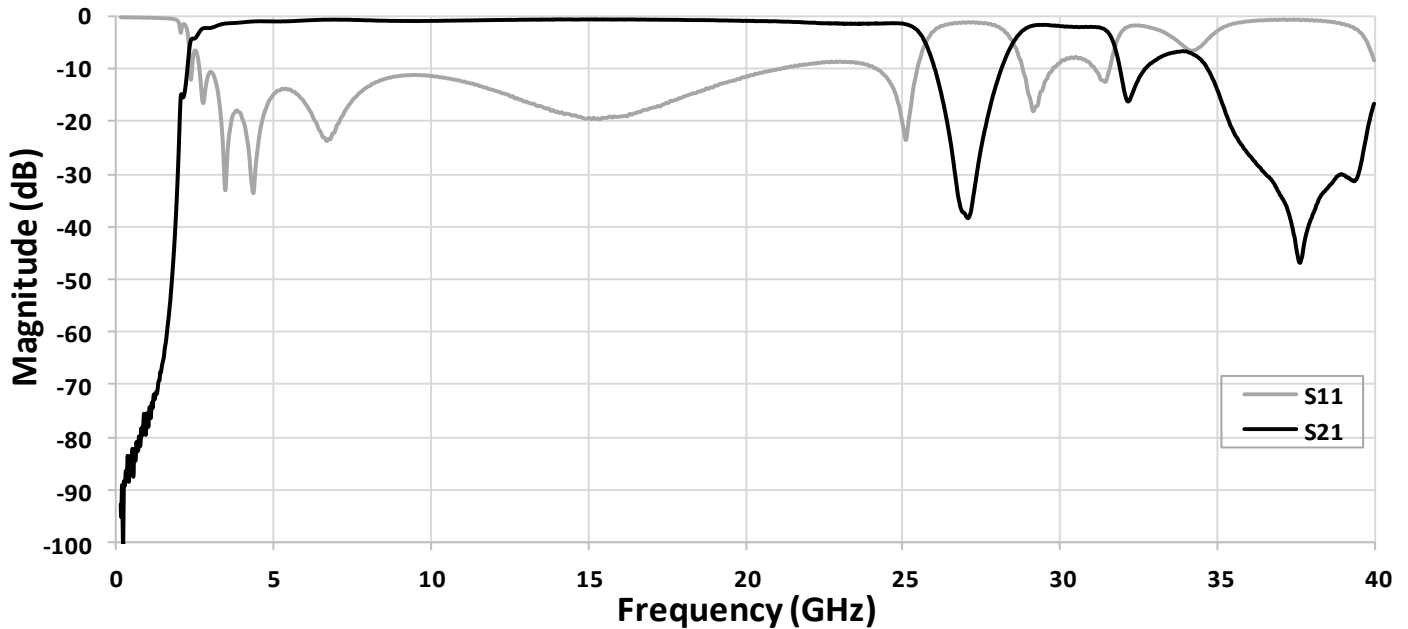
To Order Contact KCCSales@knowles.com | For Technical Inquiries Contact DLIengineering@knowles.com

3 - 24.5GHz Highpass WB Filter

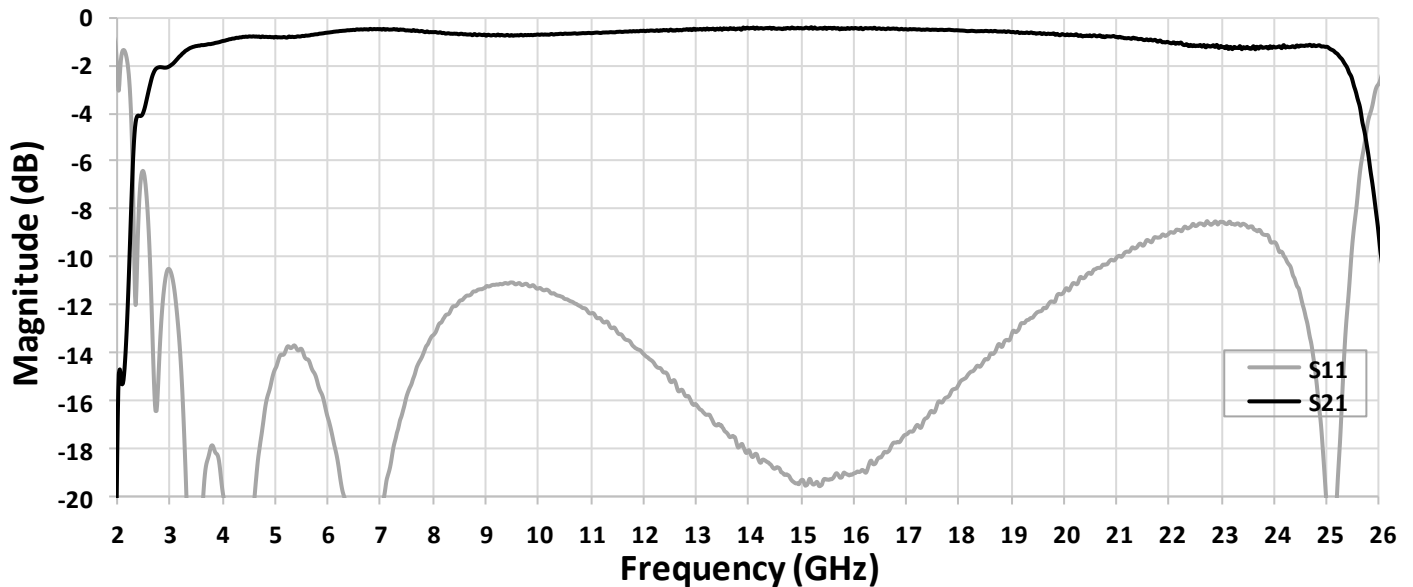
H026XHXW

www.knowlesc capacitors.com

Typical Measured Data



Wideband Performance



Narrowband Performance

2777 Route 20 East, Cazenovia, NY 13035 | Ph.: (315)655-8710

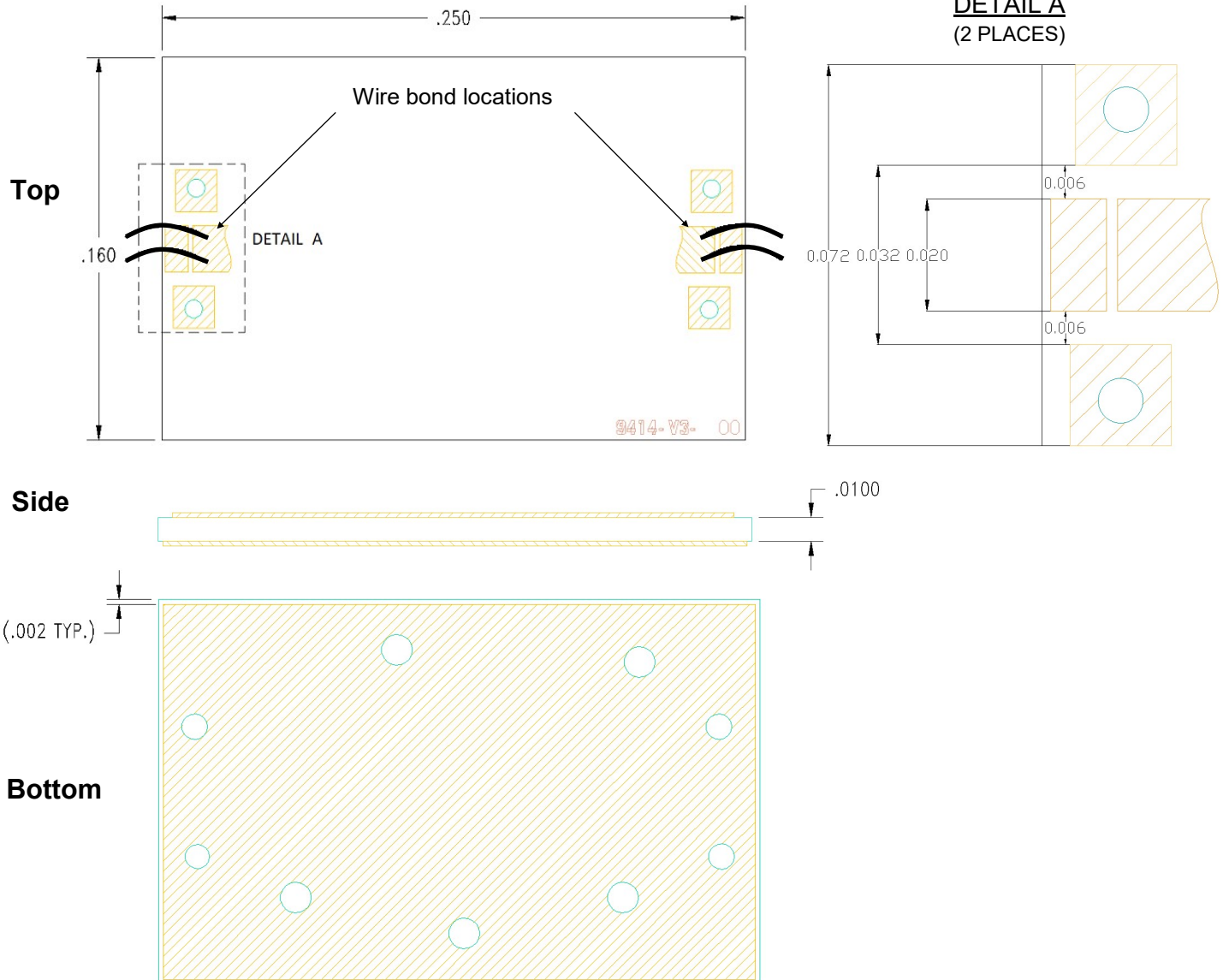
To Order Contact KCCSales@knowles.com | For Technical Inquiries Contact DLengineering@knowles.com

3 - 24.5GHz Highpass WB Filter
H026XHXW

www.knowlescapacitors.com

Physical Dimensions

Units = inches (in)



Termination Finish (including ground plane on bottom): Gold

2777 Route 20 East, Cazenovia, NY 13035 | Ph.: (315)655-8710

To Order Contact KCCSales@knowles.com | For Technical Inquiries Contact DLIengineering@knowles.com

3 - 24.5GHz Highpass WB Filter H026XHXW

www.knowlescapacitors.com

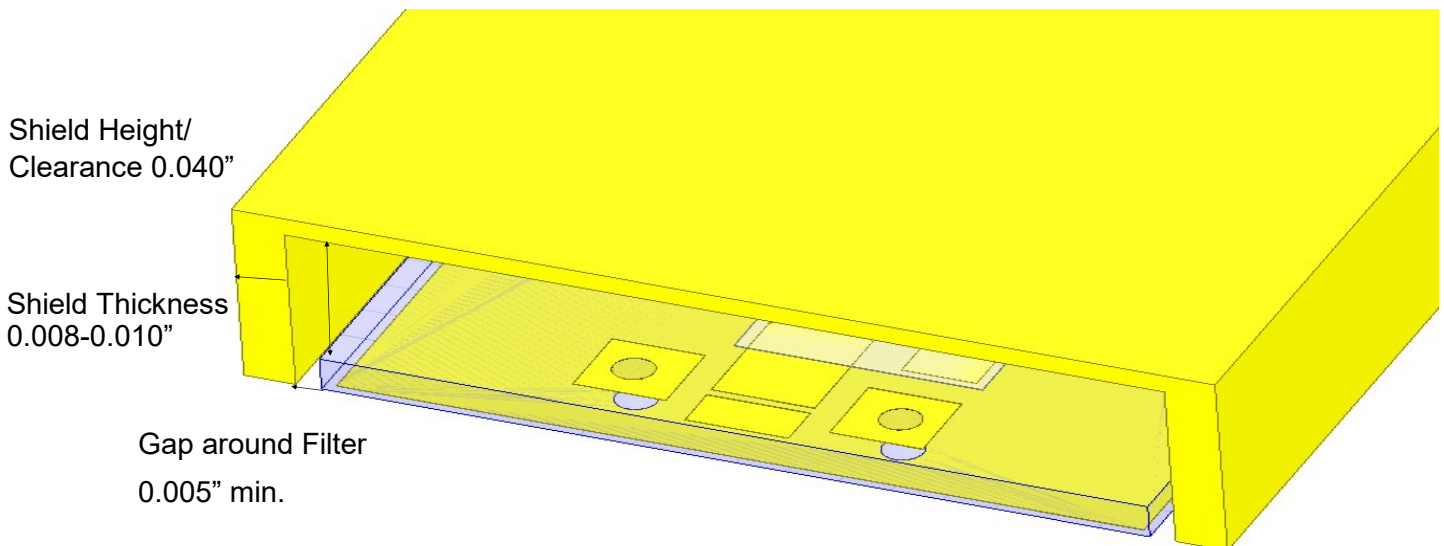
Application Notes

This wirebond filter is attached to a flat metallized surface to provide grounding. If additional shielding is needed in the application, shielding may be added around the filter as specified below:

- **Shield material:** Gold-plated Brass, Steel, Aluminum or conductive metal
- **Minimum shield material thickness:** 0.008 inches
- **Shield height/clearance:** 0.040 inches
- **Space required around filter:** 0.005 inch

Recommended material for attachment of the filter to the housing:

- Loctite Ablestik 5025E conductive epoxy



2777 Route 20 East, Cazenovia, NY 13035 | Ph.: (315)655-8710

To Order Contact KCCSales@knowles.com | For Technical Inquiries Contact DLIengineering@knowles.com