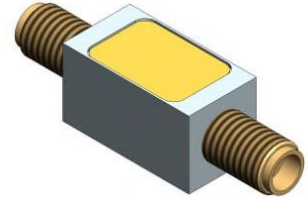


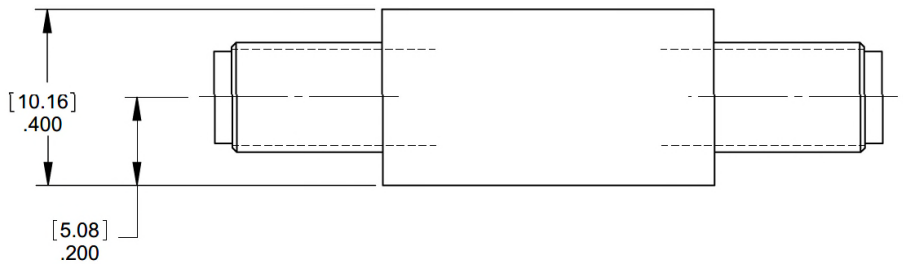
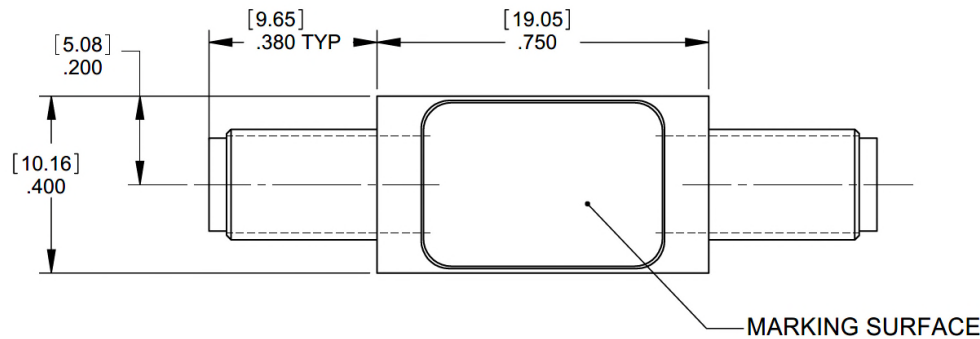
Lumped Lowpass Filter



Features/Benefits

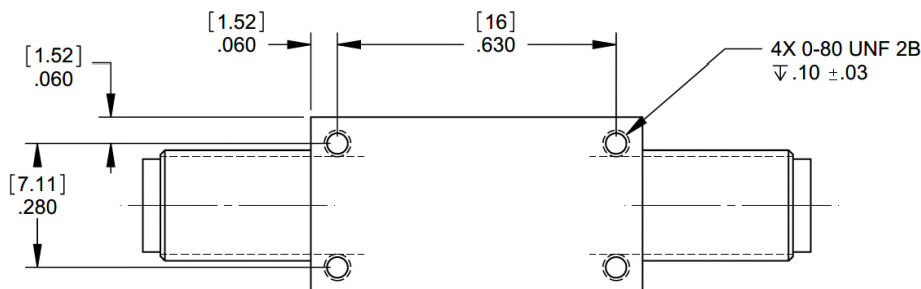
- SMA-F Connectors
- Made in U.S.A.

Parameter	Specification
Cutoff Frequency (Fc)	4000 MHz
Insertion Loss	-3 dBa max @ 4000 MHz
Rejection	-20 dBc min @ 13000 MHz
Temperature, Operating	-20°C to +70°C
Temperature, Storage	-20°C to +70°C
Mechanical Dimensions	0.750 x 0.400 x 0.400 inches [19.05 x 10.16 x 10.16 mm] (L X W X H)

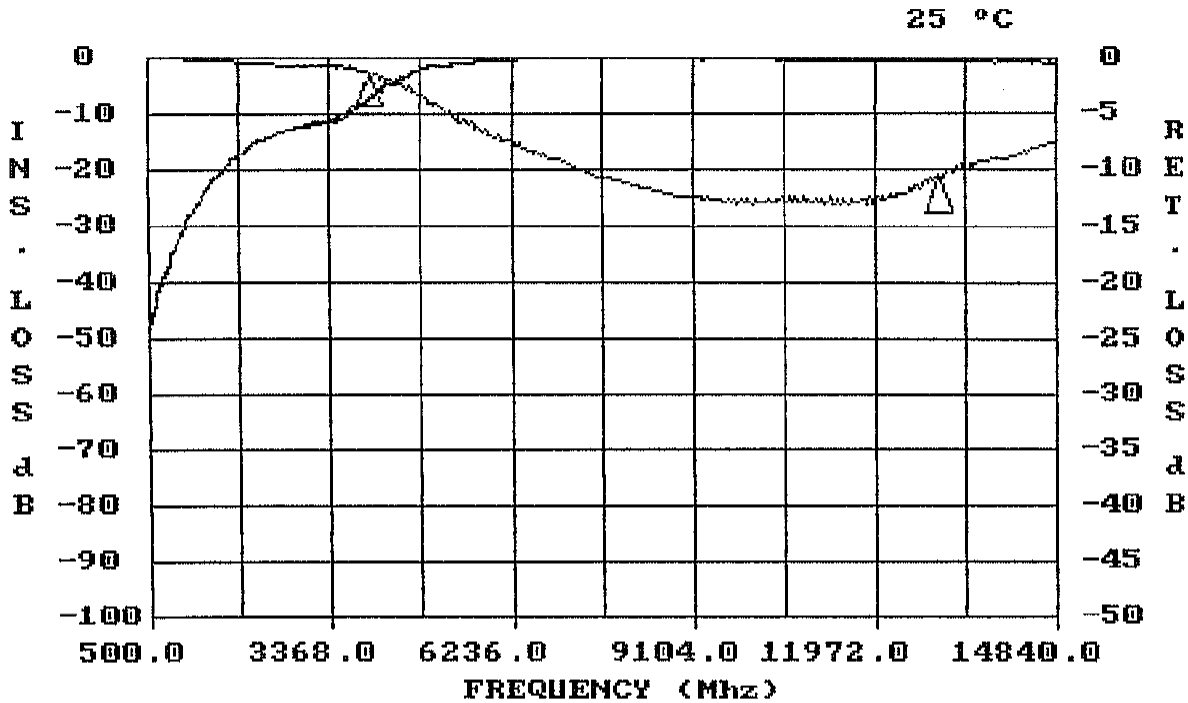


UNLESS OTHERWISE SPECIFIED
DIMENSIONS ARE IN INCHES.
TOLERANCES ARE:

INCHES	MILLIMETERS
.XX ± .02	[X.X] ± .5
.XXX ± .020	[X.XX] ± .51
.XXXX ± .0020	[X.XXX] ± .051



This document contains proprietary information and is to be used only for the purposes for which it has been supplied and is not to be duplicated or disclosed in whole or in part without written permission from a duly authorized representative of Knowles.



FREQUENCY (MHZ)	VALUE	SPEC	COMMENTS
4000	-2.69 dbA	-3 dbA MAX	
13000	-21.1 dbA	-20 dbA MIN	
FREQUENCY (MHZ)	VALUE	SPEC	COMMENTS

This document contains proprietary information and is to be used only for the purposes for which it has been supplied and is not to be duplicated or disclosed in whole or in part without written permission from a duly authorized representative of Knowles.

Phone: 1-315-655-8710 • Email: KPD-NA-sales@knowles.com • www.knowlescapacitors.com

Product and product information are subject to change without notice.