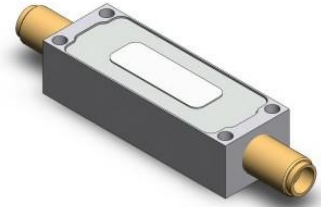


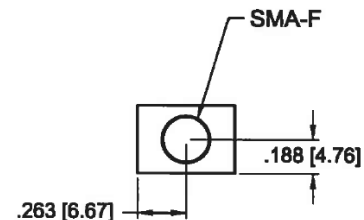
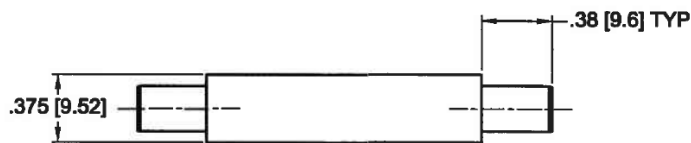
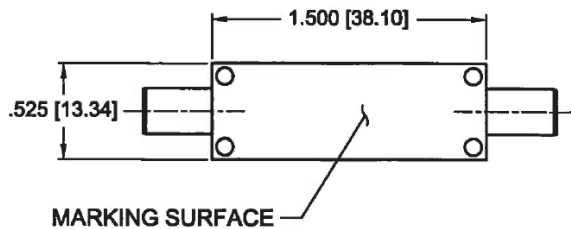
Lowpass Filter

Features/Benefits

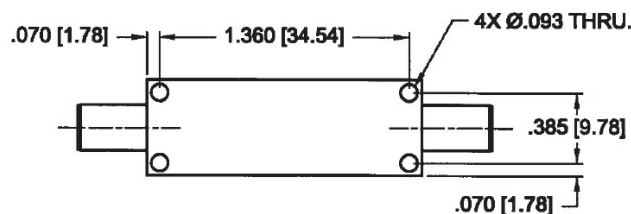
- SMA-Female Connectors
- Made in U.S.A.



Parameter	Specification
Cutoff Frequency (Fc)	1000 MHz
Return Loss	-15 dB min from 0.3 MHz to 1000 MHz
Insertion Loss	-3.0 dBa max from 0.3 MHz to 1000 MHz
Rejection	-60 dBc min from 1255 MHz to 2500 MHz
Temperature, Operating	-20°C to +70°C
Temperature, Storage	-55°C to +125°C
Mechanical Dimensions	1.500 x 0.525 x 0.375 inches [38.10 x 13.34 x 9.52 mm] (L X W X H)



TYP. BOTH ENDS



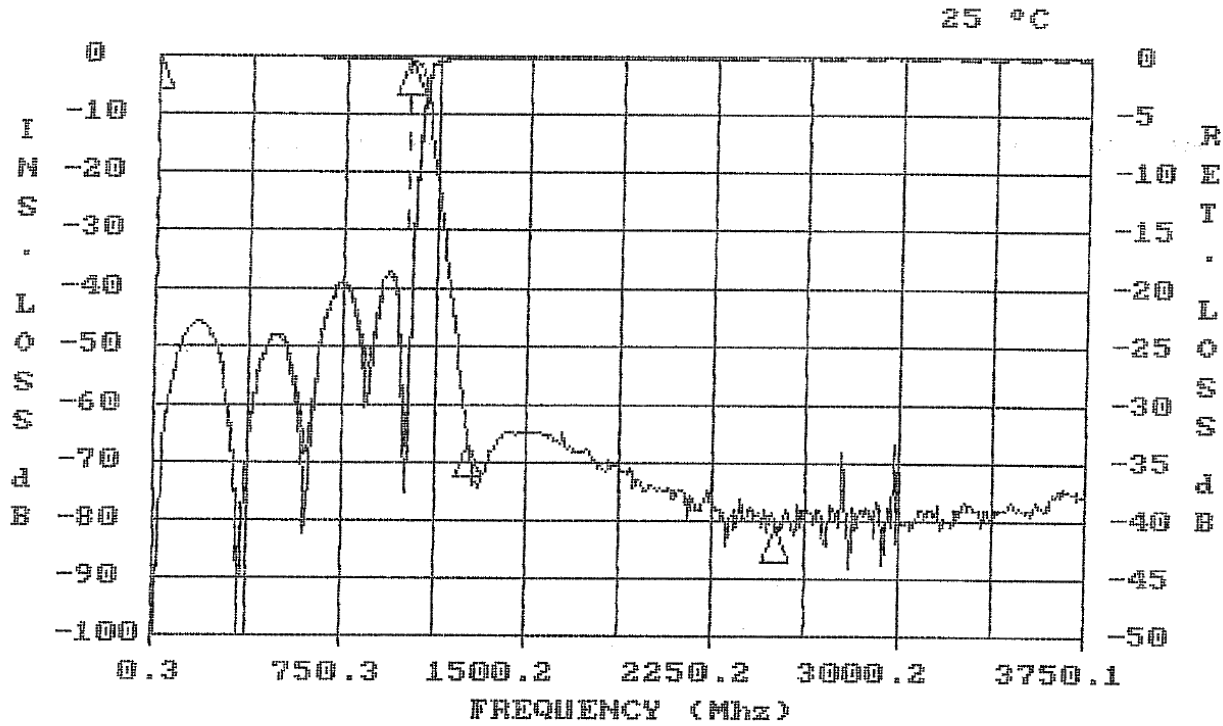
UNLESS OTHERWISE SPECIFIED
DIMENSIONS ARE IN INCHES.
TOLERANCES ARE:

INCHES	MILLIMETERS
.XX ± .02	[X.X] ± .5
.XXX ± .010	[X.XX] ± .25
.XXXX ± .0020	[X.XXX] ± .051

This document contains proprietary information and is to be used only for the purposes for which it has been supplied and is not to be duplicated or disclosed in whole or in part without written permission from a duly authorized representative of Knowles.

Phone: 1-315-655-8710 • Email: KPD-NA-sales@knowles.com • www.knowlescapacitors.com

Product and product information are subject to change without notice.



FREQUENCY (MHZ)	VALUE	SPEC	COMMENTS
.3 - 1000	-5.59 dbA	-3 dbA MAX	
1255 - 2500	-63.4 dbc	-60 dbc MIN	

FREQUENCY (MHZ)	VALUE	SPEC	COMMENTS
.3 - 1000	-18.7	-15 db MIN	(S11) - VSWR
.3 - 1000	-18.5	-15 db MIN	(S22) - VSWR

This document contains proprietary information and is to be used only for the purposes for which it has been supplied and is not to be duplicated or disclosed in whole or in part without written permission from a duly authorized representative of Knowles.

Phone: 1-315-655-8710 • Email: KPD-NA-sales@knowles.com • www.knowlescapacitors.com

Product and product information are subject to change without notice.