

11.2GHz 2-way Wilkinson Power Divider

PDW08604 PRELIMINARY

DESCRIPTION

DLI's 11.2GHz 2-way power divider / combiner offers unmatched size and performance in a surface mount configuration. This power divider utilizes DLI's low loss temperature stable materials which offer small size and minimal performance variation over temperature.

FEATURES

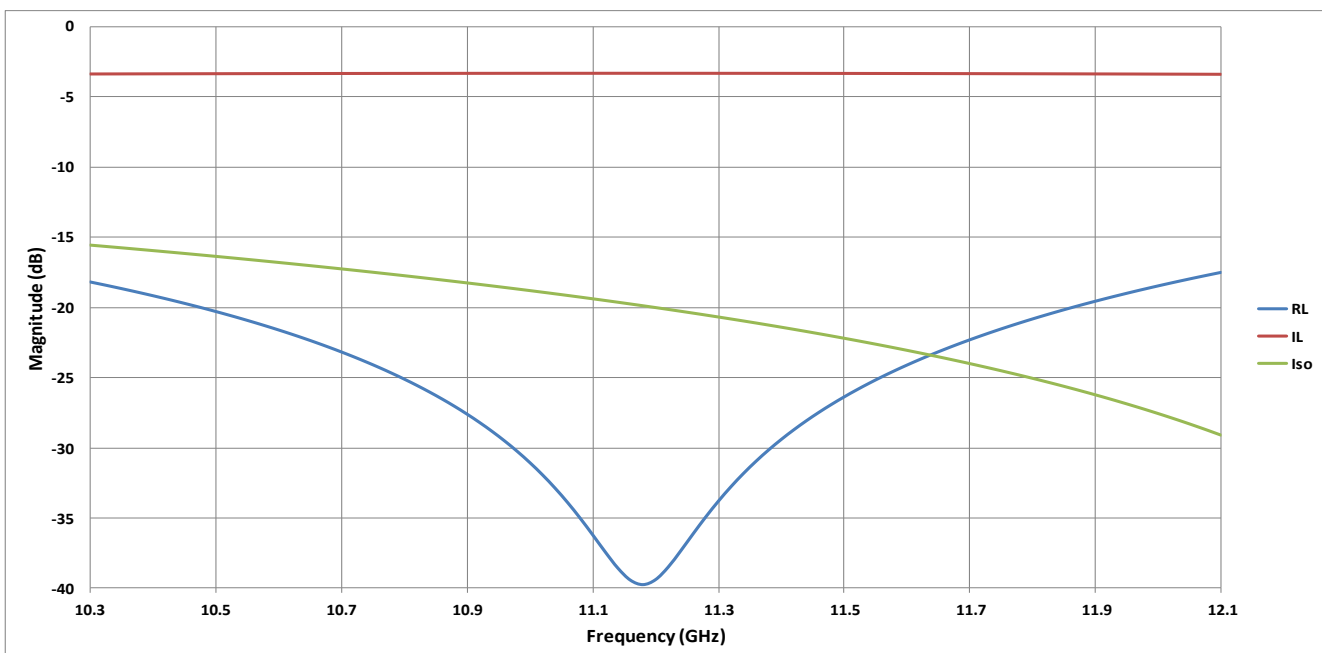
- Small Size
- Frequency Stable over Temperature
- Solder Surface Mount Package
- Excellent Repeatability
- Moisture Sensitivity Level: MSL1
- Operating & Storage Temp: -55°C to +125°C
- Characteristic Impedance: 50Ω
- Available in Tape and Reel packaging as PDW08604—T

SPECIFICATIONS*

Parameter	Frequency Range (GHz)	Min	Typ.	Max	
Nominal Power Splitting (dB)	10.6—11.8		3.0		
Nominal Phase Shift (Deg)			0.0		
Amplitude Balance (dB)			± 0.2		
Phase Balance (Deg)			± 2.0		
Excess Insertion Loss (dB)				0.3	
Return Loss (dB)			12	18	
Isolation (dB)			12	18	

*Electrical specifications based on typical mounted performance at room temperature. Insertion loss shall vary up to ±0.5dB over temperature.

Simulated Performance

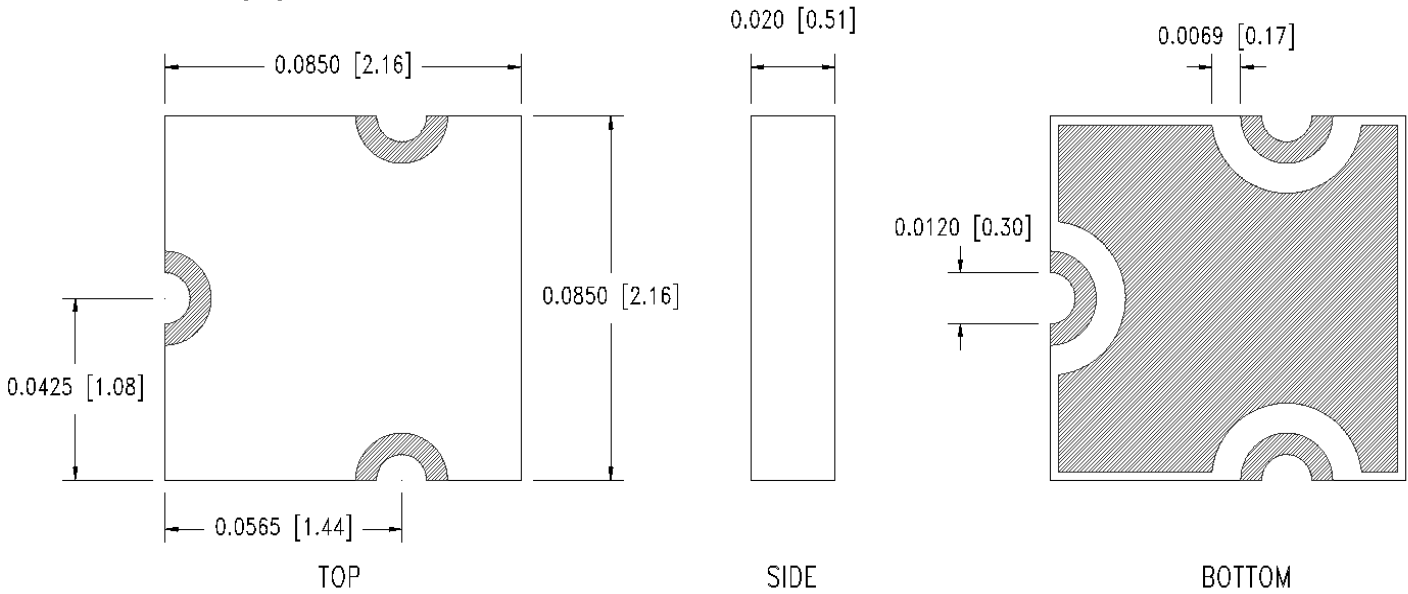


11.2GHz 2-way Wilkinson Power Divider

PDW08604 PRELIMINARY

Physical Dimensions

unit = in [mm]



Recommended PWB Layout

unit = in [mm]

- 50Ω trace dimensions are application specific
- Ensure adequate grounding beneath the part

