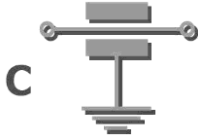
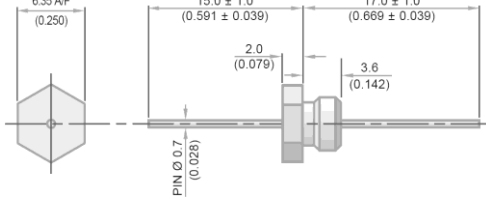


Feedthrough EMI Filter Datasheet
(M5 Thread : 6.35mm Hexagonal Head)

Circuit Configuration



Dimensions mm (inches)



M5 × 0.8 – 6g Thread

Electrical Details	
Electrical Configuration	C Filter
Capacitance Measurement	@ 1000hr Point
Current Rating	10A
Insulation Resistance (IR)	10GΩ or 1000ΩF
Temperature Rating	-55°C to +125°C
Ferrite Inductance (Typical)	Not Applicable
Mechanical Details	
Head A/F	6.35mm (0.250")
Nut A/F	N/a. For use in tapped hole
Washer Diameter	N/a
Mounting Torque	0.3Nm (2.65lbf in) max.
Mounting Hole	M5 × 0.8 – 6h
Max. Panel Thickness	N/a
Weight (Typical)	1.2g (0.04oz)
Finish	Silver plate on copper undercoat

Product Code	Capacitance ±20%	Dielectric	Rated Voltage (dc)	DWV (dc)	Typical Insertion Loss (db)					
					0.01MHz	0.1MHz	1MHz	10MHz	100MHz	1GHz
*SFTMC5000100ZC	10pF -20% / +80%	COG	500#	750						4
SFTMC5000150ZC	15pF -20% / +80%	COG	500#	750						7
SFTMC5000220ZC	22pF -20% / +80%	COG	500#	750						10
SFTMC5000330ZC	33pF -20% / +80%	COG	500#	750						12
*SFTMC5000470ZC	47pF -20% / +80%	COG	500#	750					1	15
*SFTMC5000680MC	68pF	COG	500#	750					2	18
*SFTMC5000101MC	100pF	COG	500#	750					4	22
SFTMC5000151MC	150pF	COG	500#	750					7	25
*SFTMC5000221MC	220pF	COG	500#	750					10	29
*SFTMC5000331MC	330pF	COG	500#	750					13	33
*SFTMC5000471MX	470pF	†X7R	500#	750				1	16	35
SFTMC5000681MX	680pF	†X7R	500#	750				2	19	39
*SFTMC5000102MX	1.0nF	X7R	500#	750				4	23	41
SFTMC5000152MX	1.5nF	X7R	500#	750				7	26	45
*SFTMC5000222MX	2.2nF	X7R	500#	750				10	30	50
SFTMC5000332MX	3.3nF	X7R	500#	750				13	33	52
*SFTMC5000472MX	4.7nF	X7R	500#	750			1	16	36	55
SFTMC5000682MX	6.8nF	X7R	500#	750			2	19	39	57
*SFTMC5000103MX	10nF	X7R	500#	750			4	22	41	60
*SFTMC5000153MX	15nF	X7R	500#	750			7	25	44	62
*SFTMC5000223MX	22nF	X7R	500#	750			10	29	46	65
SFTMC5000333MX	33nF	X7R	500#	750			13	33	48	68
*SFTMC2000473MX	47nF	X7R	200	500		1	16	35	50	70
SFTMC2000683MX	68nF	X7R	200	500		2	19	39	54	>70
*SFTMC1000104MX	100nF	X7R	100	250		4	22	41	57	>70
*SFTMC0500154MX	150nF	X7R	50	125		7	25	45	60	>70

- Also rated for operation at 115Vac 400Hz. Self-heating will occur – evaluation in situ recommended

* Recommended values

† Also available in COG

Ordering Information

Type	Case Style	Thread	Electrical configuration	Voltage (dc)	Capacitance in picofarads (pF)	Capacitance Tolerance	Dielectric	Nuts & washers
SF	T	M	C	500	0102	M	X	0
Syfer Filter	6.35mm Hex Head Low Profile	M5	C = C Filter	050 = 50V 100 = 100V 200 = 200V 500 = 500V	First digit is 0. Second and third digits are significant figures of capacitance code. The fourth digit is the number of zeros following. Examples: 0101 = 100pF 0332 = 3300pF	M = ±20% Z = -20+80%	C = COG/NPO X = X7R	0 = Without

Note: The addition of a 4-digit numerical suffix code can be used to denote changes to the standard part.

Options include for example: change of pin length / custom body dimensions or threads / alternative voltage rating / non-standard intermediate capacitance values / test requirements.

Please refer specific requests to the factory.

