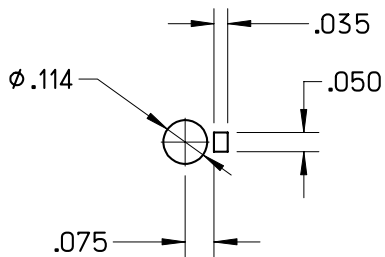
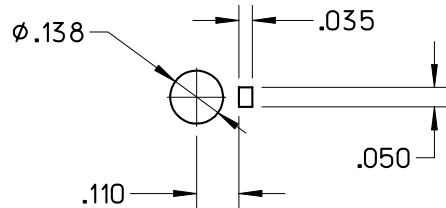


**SERIES:**  
27263  
37263  
47263  
57263



**SERIES:**  
(X)7273  
(X)7283  
(X)7293  
WHERE 'X' CAN BE  
EITHER 1, 2, 3, 4 OR 5



# R321-1

R321-1B

REV.

## B

ENGINEERING LAYOUT  
SUGGESTED SOLDER PADS

SCALE:  
8" = 1"

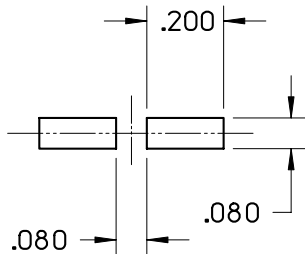
DRN. TAM	CHK. TAM	APP. TAM
DATE 03/12/01	DATE 03/12/01	DATE 03/12/01

FILE:  
RSPECS

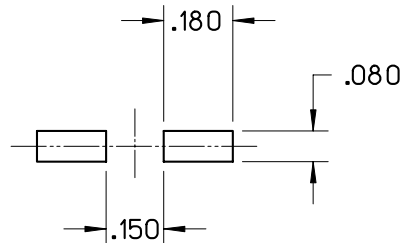
### NOTES

1. END USER RESPONSIBLE TO DETERMINE ACCEPTABILITY OF SOLDER PAD FOR EACH APPLICATION.
2. TYPICAL SOLDER PAD PRINT THICKNESS .005" TO .010" ..

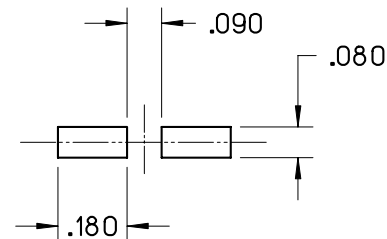
**SERIES:**  
(X)7261SL  
EITHER 1, 2, 3, 4 OR 5



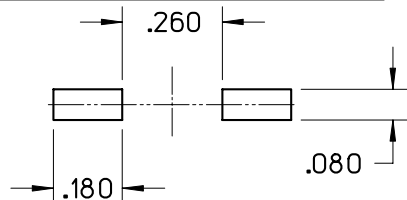
**SERIES:**  
(X)7271SL  
EITHER 1, 2, 3, 4 OR 5



**SERIES:**  
(X)7281SL  
EITHER 1, 2, 3, 4 OR 5



**SERIES:**  
(X)7291SL  
EITHER 1, 2, 3, 4 OR 5



B	03/08/02	TAM	TAM	TAM	NONE
A	03/12/01	TAM	-	-	010-035
LEVEL	DATE	DRN.	CHK.	APP.	ECN

### REVISIONS



JOHANSON MANUFACTURING CORPORATION  
BOONTON, N.J. 07005

PROPRIETARY INFORMATION CONTAINED NOT TO BE USED  
WITHOUT JOHANSON MANUFACTURING CORPORATION APPROVAL.